

META Bath spout for wall mounting - Chrome

META

13 801 660



- 200mm projection
- circular normal flow
- rosette Ø 60 mm
- hole diameter 37 mm
- 1/2" connection
- max. flow 24.6 l/min at 3 bar flow pressure
- WRAS 2001010

	Chrome	13 801 660-00
	Brushed Platinum	13 801 660-06
	Dark Chrome	13 801 660-19
	Light Gold	13 801 660-26
	Brushed Light Gold	13 801 660-27
	Matte Black	13 801 660-33
	Brushed Bronze	13 801 660-42
	Brushed Champagne (22kt Gold)	13 801 660-46
	Champagne (22kt Gold)	13 801 660-47
	Brushed Chrome	13 801 660-93
	Brushed Dark Platinum	13 801 660-99

Recommended miscellaneous

Concealed wall elbow -

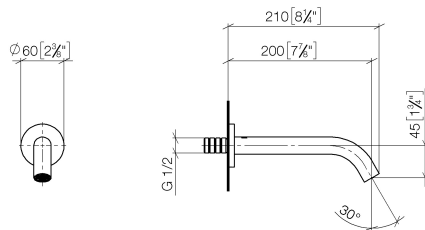
35 085 970 90



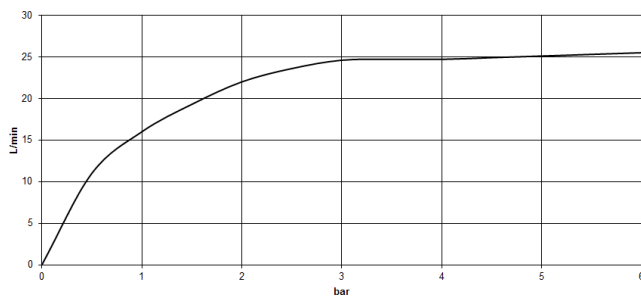
- max. recess depth 163 mm
- min. recess depth 90 mm

13 801 660

mm [inches]



Flow rate chart



Codes & Standards

ASME A112.18.1

cUPC

DIN 4109

ISO 3822

Scottish Water
Byelaws

UK Water Supply
Regulations

Ü-Zeichen



META Bath spout for wall mounting - Chrome

META

13 801 660

Certificates

IAPMO_4976

LGA_18

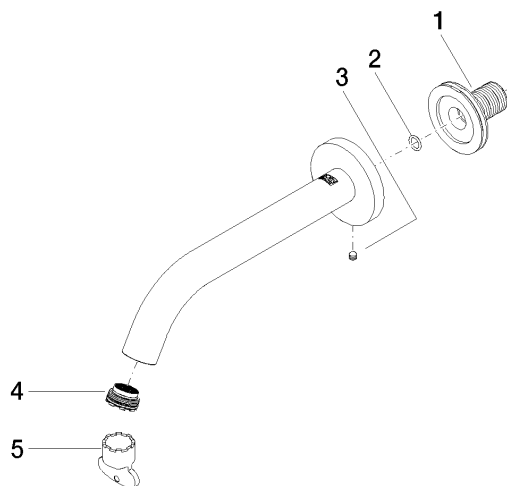
WRAS_2001

13 801 660

Product version up to 5/27/2021

Product version from 5/27/2021 to 5/28/2021

Product version from 5/28/2021





META Bath spout for wall mounting - Chrome

META

13 801 660

Spare parts list

Product version up to 5/27/2021

Product version from 5/27/2021 to 5/28/2021

Product version from 5/28/2021

No.	Item Number	Name	Quantity used	Delivery time
	90 24 03 280 00 90	nipple	5	2