

## META Bath spout for wall mounting - Brushed Bronze

META

13 801 660



- 200mm projection
- circular normal flow
- rosette Ø 60 mm
- hole diameter 37 mm
- 1/2" connection
- max. flow 24.6 l/min at 3 bar flow pressure
- WRAS 2001010

|  |                               |               |
|--|-------------------------------|---------------|
|    | Brushed Bronze                | 13 801 660-42 |
|    | Chrome                        | 13 801 660-00 |
|    | Brushed Platinum              | 13 801 660-06 |
|    | Dark Chrome                   | 13 801 660-19 |
|    | Light Gold                    | 13 801 660-26 |
|    | Brushed Light Gold            | 13 801 660-27 |
|    | Matte Black                   | 13 801 660-33 |
|    | Brushed Champagne (22kt Gold) | 13 801 660-46 |
|    | Champagne (22kt Gold)         | 13 801 660-47 |
|   | Brushed Chrome                | 13 801 660-93 |
|  | Brushed Dark Platinum         | 13 801 660-99 |

### Recommended miscellaneous



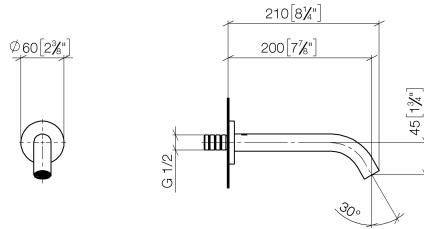
**Concealed wall elbow -**

35 085 970 90

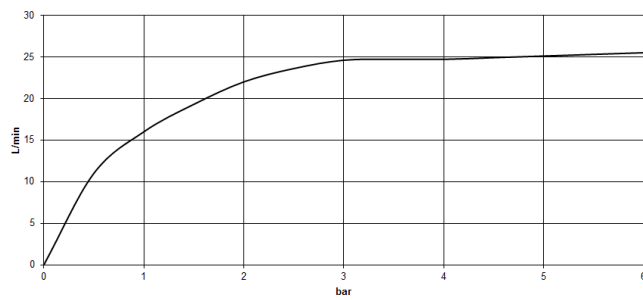
- min. recess depth 90 mm
- max. recess depth 163 mm

13 801 660

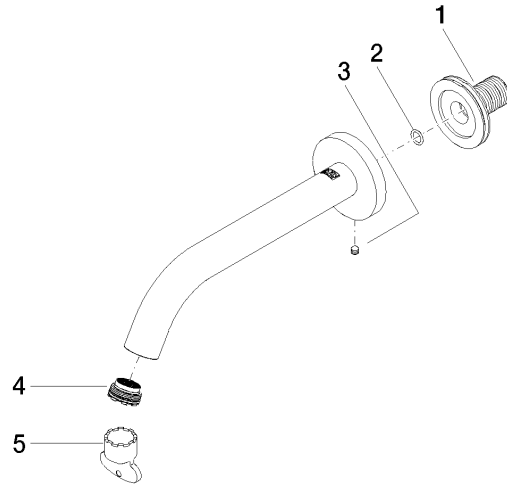
mm [inches]



**Flow rate chart**



**Product version from 5/28/2021**





## META Bath spout for wall mounting - Brushed Bronze

META

13 801 660

### **Spare parts list**

**Product version from 5/28/2021**