

## TARA Bath spout for wall mounting - Brushed Bronze

TARA

13 801 892

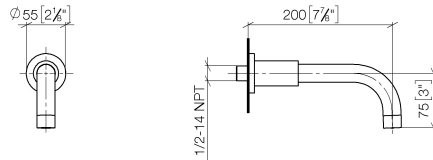


- 200mm projection
- circular normal flow
- rosette Ø 55 mm
- hole diameter 37 mm
- 1/2" connection
- max. flow 29 l/min at 3 bar flow pressure
- WRAS 1811020

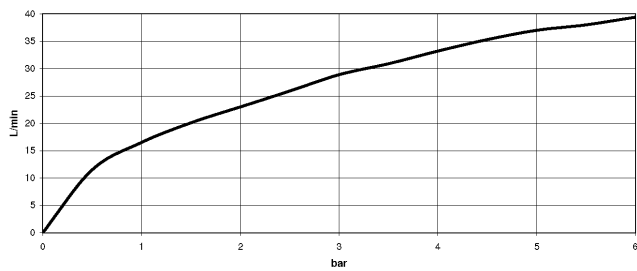
	Brushed Bronze	13 801 892-42
	Chrome	13 801 892-00
	Brushed Platinum	13 801 892-06
	Platinum	13 801 892-08
	Dark Chrome	13 801 892-19
	Brushed Durabronze (23kt Gold)	13 801 892-28
	Matte Black	13 801 892-33
	Brushed Champagne (22kt Gold)	13 801 892-46
	Champagne (22kt Gold)	13 801 892-47
	Brushed Chrome	13 801 892-93
	Brushed Dark Platinum	13 801 892-99

13 801 892

mm [inches]



### Flow rate chart



### Codes & Standards

DIN 4109

ISO 3822

Scottish Water  
Byelaws

UK Water Supply  
Regulations

Ü-Zeichen



## TARA Bath spout for wall mounting - Brushed Bronze

---

TARA

13 801 892

### Certificates

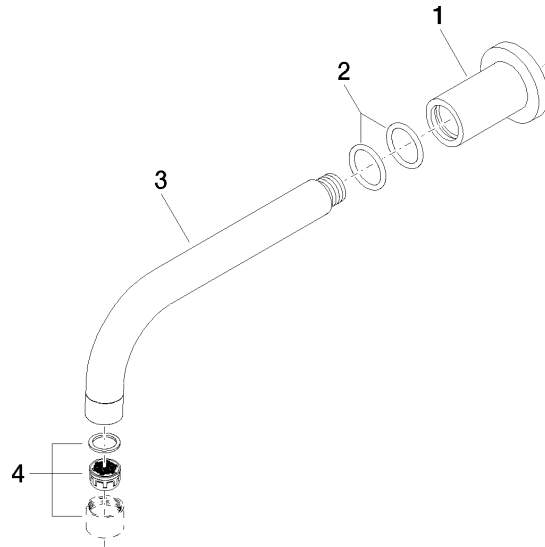
---

LGA\_18

WRAS\_240602

**Product version from 4/1/2024**

Parts for other  
finishes can be found  
here: [Chrome](#)





## TARA Bath spout for wall mounting - Brushed Bronze

TARA

13 801 892

### Spare parts list

#### Product version from 4/1/2024

No.	Item Number	Name	Quantity used	Delivery time
	09 27 89 009-42	rosette	5	60