

ELIO HOT & COLD WATER DISPENSER - Chrome

ELIO

17 871 790 Product version from 3/1/2025



- 142mm projection
- pivotable spout 360°
- laminar flow
- height of mixer 250 mm
- height up to laminar flow regulator 227 mm
- hole diameter 35 mm
- provides filtered, hot water up to 93°C
- Provides filtered water
- max. flow 3.8 l/min at 3 bar flow pressure
- mechanical valve
- lead-free
- lever

- This product can help a building meet the requirements of Green Building Rating Systems, e.g. LEED®, BREEAM®, DGNB

A minimum flow pressure of 3 bar is necessary for the HOT & COLD WATER DISPENSER to work perfectly in conjunction with a hot water tank and filter.

The installation must be above a kitchen sink.

The filter cartridge must be changed every six months. The installation instructions contain further information for guidance.

Detailed planning information and technical data can be found at

www.dornbracht.com/professional

Not compatible with reverse osmosis filtration

Provides constantly boiling water by turning the lever forward – version without scalding protection.

A minimum flow pressure of 3 bar is necessary for the HOT & COLD WATER DISPENSER to work perfectly in conjunction with a hot water tank and filter.

The installation must be above a kitchen sink.

The filter cartridge must be changed every six months. The installation instructions contain further information for guidance.

Detailed planning information and technical data can be found at www.dornbracht.com/professional

Not compatible with reverse osmosis filtration

Provides constantly boiling water by turning the lever forward – version without scalding protection.

| | | |
|--|--------------------------------|---------------|
|  | Chrome | 17 871 790-00 |
|  | Brushed Platinum | 17 871 790-06 |
|  | Platinum | 17 871 790-08 |
|  | Dark Chrome | 17 871 790-19 |
|  | Brushed Durabronze (23kt Gold) | 17 871 790-28 |
|  | Brushed Bronze | 17 871 790-42 |
|  | Brushed Champagne (22kt Gold) | 17 871 790-46 |
|  | Champagne (22kt Gold) | 17 871 790-47 |
|  | Brushed Chrome | 17 871 790-93 |
|  | Brushed Dark Platinum | 17 871 790-99 |

Required miscellaneous



Hot water tank incl. filter -

12 892 970 90

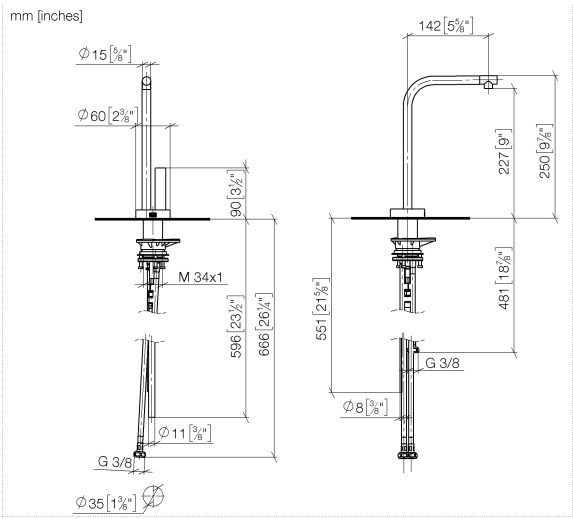
Required miscellaneous

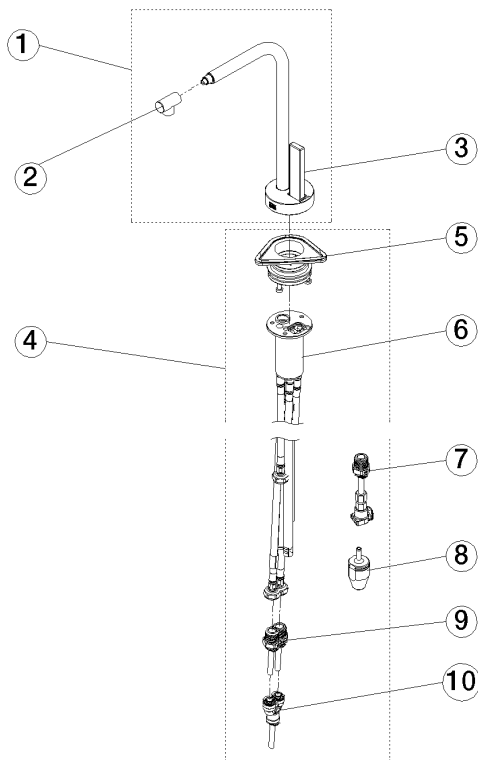


Hose set

12 530 970 90

17 871 790 Product version from 3/1/2025





Spare parts list

| No. | Item Number | Name | Quantity used | Delivery time |
|-----|--------------------|------------|---------------|---------------|
| 1 | 90 17 87 179 00-00 | spout | 1.00 | 10 |
| 4 | 90 17 87 179 01 90 | set | 1.00 | 2 |
| 5 | 90 30 10 057 00 90 | fixing set | 1.00 | 2 |
| 8 | 90 24 04 291 00 90 | insert | 1.00 | 2 |
| 7 | 90 24 04 293 00 90 | adaptor | 1.00 | 2 |
| 2 | 90 17 11 048 00-00 | aerator | 1.00 | 10 |
| 9 | 90 24 04 293 01 90 | hose | 1.00 | 2 |
| 3 | 90 20 87 028 00-00 | handle | 1.00 | 10 |
| 10 | 90 24 04 364 00 90 | adaptor | 1.00 | 2 |
| 6 | 90 30 01 220 00 90 | hose | 1.00 | 2 |