








MADISON Three-hole basin mixer with pop-up waste - Brushed Dark Brass

MADISON

20 700 360    Product version from 7/31/2009

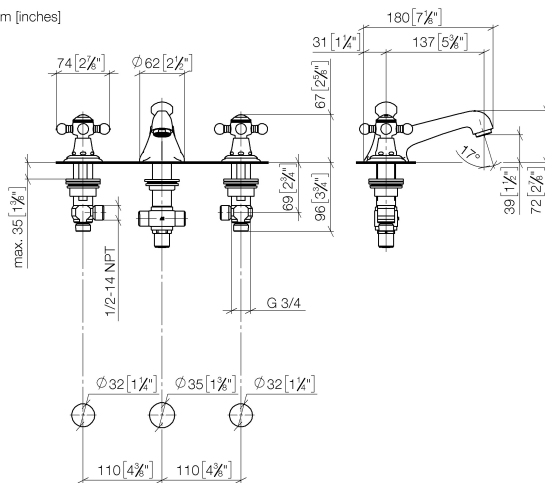


- 135mm projection
  - fixed spout
  - circular, air-enriched flow
  - height of mixer 72 mm
  - height up to aerator 40 mm
  - hole diameter valve 32 mm
  - hole diameter spout 35 mm
  - without rosette
  - 2x 1/2" x 1/2" high pressure hose
  - max. flow 7 l/min
  - lead-free
  - This product can help a building meet the requirements of Green Building Rating Systems, e.g. LEED®, BREEAM®, DGNB
  - WRAS
- Only suitable for basins with an overflow.

	Brushed Dark Brass	20 700 360-39
	Chrome	20 700 360-00
	Brushed Platinum	20 700 360-06
	Platinum	20 700 360-08
	Durabrass (23kt Gold)	20 700 360-09
	Brushed Durabrass (23kt Gold)	20 700 360-28
	Brushed Dark Platinum	20 700 360-99

20 700 360 Product version from 7/31/2009

mm [inches]



### Flow rate chart



### Codes & Standards

DIN 4109

EN 200

Executive Order  
no. 1007

ISO 3822

Scottish Water  
Byelaws

UK Water Supply  
Regulations

Ü-Zeichen

VA-Zeichen



MADISON Three-hole basin mixer with pop-up waste - Brushed Dark Brass

MADISON

20 700 360    Product version from 7/31/2009

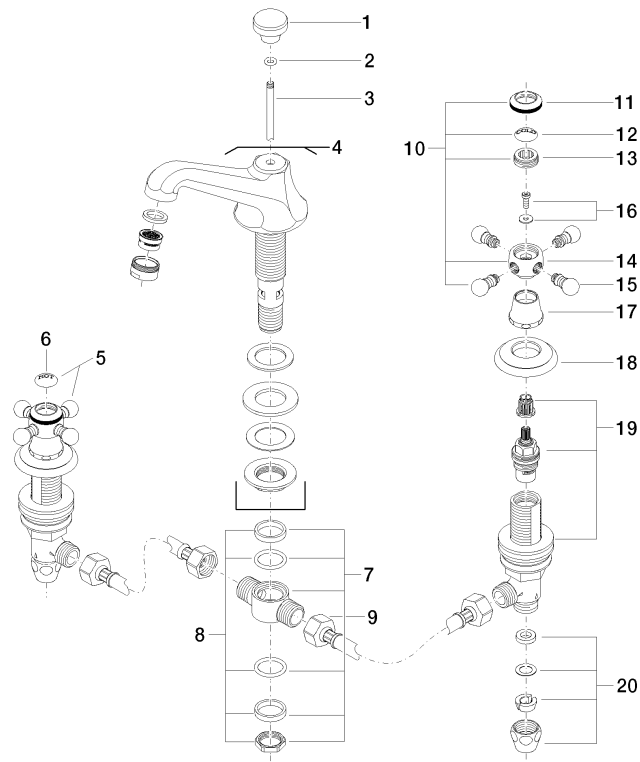
Certificates and sustainability

---

GDV_0400	ETA_17	LGA_8	WRAS_240602
----------	--------	-------	-------------

20 700 360 Product version from 7/31/2009

Parts for other  
finishes can be found  
here: [Chrome](#)



21 ————— Ablaufgarnitur 04.11.01.001.00.FP