

TARA Three-hole basin mixer with pop-up waste - Brushed Durabrass (23kt Gold)

TARA

20 705 882 Product version from 4/1/2024



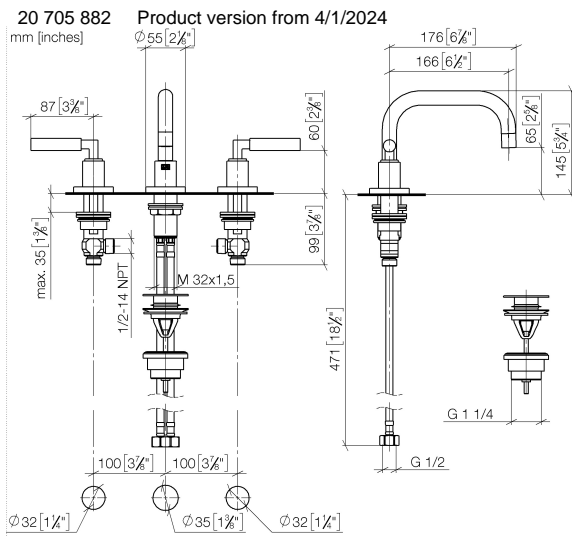
- 166mm projection
- pivotable spout 360°
- circular, air-enriched flow
- height of mixer 145 mm
- height up to aerator 65 mm
- hole diameter valve 32 mm
- hole diameter spout 35 mm
- rosette Ø 55 mm
- 2x screw-in M 10 x 1 pressure hose, leak-tested
- max. flow 5.7 l/min
- lead-free
- This product can help a building meet the requirements of Green Building Rating Systems, e.g. LEED®, BREEAM®, DGNB
- WRAS

Only suitable for basins with an overflow.

| | | |
|---|-------------------------------|---------------|
|  | Brushed Durabrass (23kt Gold) | 20 705 882-28 |
|  | Chrome | 20 705 882-00 |
|  | Brushed Platinum | 20 705 882-06 |
|  | Platinum | 20 705 882-08 |
|  | Dark Chrome | 20 705 882-19 |
|  | Matte Black | 20 705 882-33 |
|  | Brushed Dark Brass | 20 705 882-39 |
|  | Brushed Bronze | 20 705 882-42 |
|  | Brushed Champagne (22kt Gold) | 20 705 882-46 |
|  | Champagne (22kt Gold) | 20 705 882-47 |
|  | Brushed Chrome | 20 705 882-93 |
|  | Brushed Dark Platinum | 20 705 882-99 |

TARA Three-hole basin mixer with pop-up waste - Brushed Durabrass (23kt Gold)

TARA



Flow rate chart



Codes & Standards

| | | | |
|--------------------------------|-----------------------------|----------|---------------------------|
| DIN 4109 | Executive Order no. 1007 | ISO 3822 | Scottish Water Byelaws |
| UK Water Supply Regulations | Ü-Zeichen | | |



TARA Three-hole basin mixer with pop-up waste - Brushed Durabrass (23kt Gold)

TARA

20 705 882 Product version from 4/1/2024

Certificates and sustainability

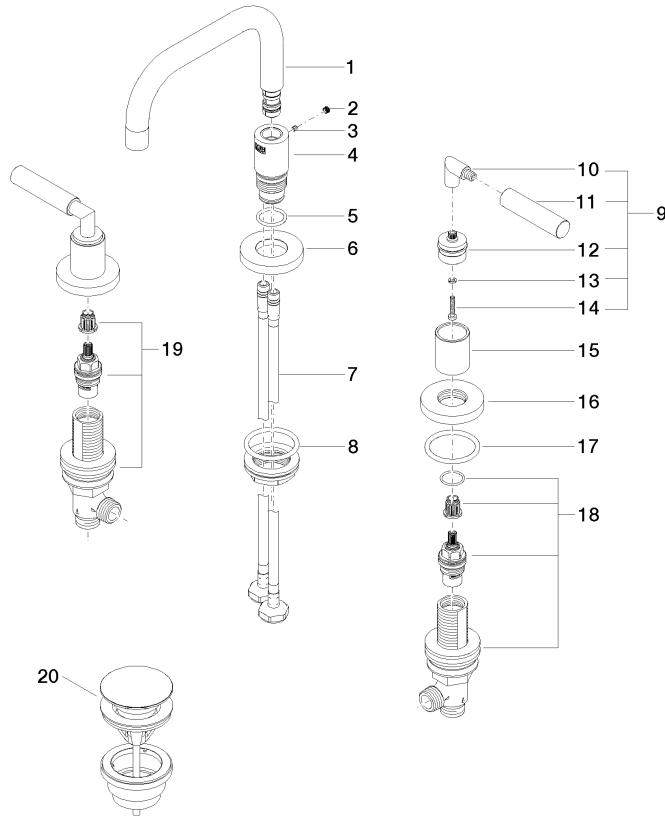
| | | |
|--------|----------|-----------|
| LGA_38 | GDV_0400 | WRAS_2303 |
|--------|----------|-----------|

TARA Three-hole basin mixer with pop-up waste - Brushed Durabronz (23kt Gold)

TARA

20 705 882 Product version from 4/1/2024

Parts for other
finishes can be found
here: [Chrome](#)





TARA Three-hole basin mixer with pop-up waste - Brushed Durabrass (23kt Gold)

TARA

20 705 882 Product version from 4/1/2024

Spare parts list

| No. | Item Number | Name | Quantity used | Delivery time |
|--|--------------------|--|---------------|---------------|
| 11 | 90 12 12 219 00-28 | base | 2.00 | 20 |
| 14 | 09 21 02 140-28 | sleeve | 2.00 | 20 |
| 4 | 09 14 10 015 90 | seal | 1.00 | 2 |
| 9 | 04 18 20 022 00-28 | angle | 2.00 | - |
| Spare part can no longer be ordered, please order the replacement item | | | | |
| 18 | 90 17 11 040 51 90 | side panel | 1.00 | 2 |
| 19 | 10 125 970-28 | Basin Waste with push fastening 1 1/4" - Brushed Durabrass (23kt Gold) | 1.00 | 2 |
| 8 | 04 20 88 052 10-28 | handle | 2.00 | 20 |
| 5 | 09 28 10 140-28 | ring | 1.00 | 20 |
| 17 | 90 17 11 040 50 90 | side panel | 1.00 | 2 |
| 6 | 04 30 04 019 00 90 | hose | 2.00 | 2 |
| 1 | 90 28 22 370 00-28 | spout | 1.00 | 20 |
| 15 | 09 27 89 105-28 | rosette | 2.00 | 20 |
| 3 | 09 31 11 099 90 | pin | 1.00 | 2 |
| 7 | 04 23 10 009 02 90 | fixing set | 1.00 | 2 |
| 10 | 09 20 88 052-28 | handle | 2.00 | 20 |
| 12 | 90 30 11 029 00 90 | disc | 2.00 | 2 |
| 2 | 90 31 20 109 00 90 | plug | 1.00 | 2 |
| 13 | 90 30 30 075 00 90 | screw | 2.00 | 2 |
| 16 | 90 14 10 043 00 90 | seal | 2.00 | 2 |