

TARA Single-hole basin mixer with pop-up waste - Chrome

TARA

22 302 892 Product version from 6/30/2009 to 5/27/2021



- 100mm projection
- pivotable spout 360°
- circular, air-enriched flow
- height of mixer 235 mm
- height up to aerator 134 mm
- hole diameter 35 mm
- rosette Ø 59 mm
- 2x screw-in M 10 x 1 pressure hose, leak-tested
- max. flow 7 l/min
- lead-free
- This product can help a building meet the requirements of Green Building Rating Systems, e.g. LEED®, BREEAM®, DGNB
- WRAS

Only suitable for basins with an overflow.

	Chrome	22 302 892-00
	Brushed Platinum	22 302 892-06
	Platinum	22 302 892-08
	Dark Chrome	22 302 892-19
	Brushed Durabronze (23kt Gold)	22 302 892-28
	Matte Black	22 302 892-33
	Brushed Dark Brass	22 302 892-39
	Brushed Bronze	22 302 892-42
	Brushed Champagne (22kt Gold)	22 302 892-46
	Champagne (22kt Gold)	22 302 892-47
	Brushed Chrome	22 302 892-93
	Brushed Dark Platinum	22 302 892-99

TARA Single-hole basin mixer with pop-up waste - Chrome

TARA

22 302 892 Product version from 6/30/2009 to 5/27/2021



Flow rate chart



Codes & Standards

DIN 4109	EN 200	Executive Order no. 1007	ISO 3822
Scottish Water Byelaws	UK Water Supply Regulations	Ü-Zeichen	VA-Zeichen



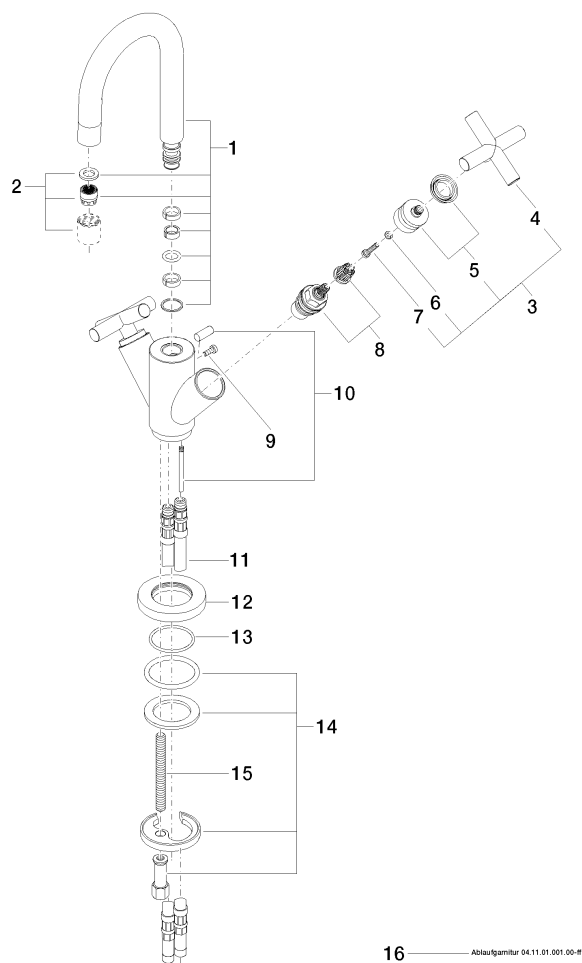
TARA Single-hole basin mixer with pop-up waste - Chrome

TARA

22 302 892 Product version from 6/30/2009 to 5/27/2021

Certificates and sustainability

ETA_18	LGA_18	GDV_0400	WRAS_240702
--------	--------	----------	-------------



16 Abbaufamilie 04.11.01.001.00-ff

Spare parts list

No.	Item Number	Name	Quantity used	Delivery time
1	90 28 22 215 01-00	spout	1.00	10
13	09 14 10 134 90	seal	1.00	2
12	09 28 10 132-00	ring	1.00	10
10	04 20 89 035 80-00	pull-rod	1.00	10
8	90 90 03 151 00 90	top	2.00	2
11	04 30 04 016 00 90	hose	2.00	60
5	90 12 12 007 00-00	base	2.00	10
9	09 30 30 054 90	screw	1.00	2
2	90 23 01 028 03-00	aerator	1.00	10
4	09 20 89 010-00	handle	2.00	60
15	09 31 11 011 90	pin	1.00	2
14	04 30 11 038 00 90	fixing set	1.00	2
3	90 20 89 010 10-00	handle	2.00	10
6	90 30 11 029 00 90	disc	2.00	2
16	90 11 01 001 00-00	pop-up waste	1.00	10
7	90 30 30 075 00 90	screw	2.00	2