

## TARA Single-hole basin mixer with pop-up waste - Brushed Platinum

TARA

22 512 892 Product version from 6/30/2009 to 5/27/2021



- 135mm projection
- pivotable spout 360°
- circular, air-enriched flow
- height of mixer 275 mm
- height up to aerator 168 mm
- hole diameter 35 mm
- rosette Ø 59 mm
- 2x screw-in M 10 x 1 pressure hose, leak-tested
- max. flow 7 l/min
- lead-free
- This product can help a building meet the requirements of Green Building Rating Systems, e.g. LEED®, BREEAM®, DGNB
- WRAS

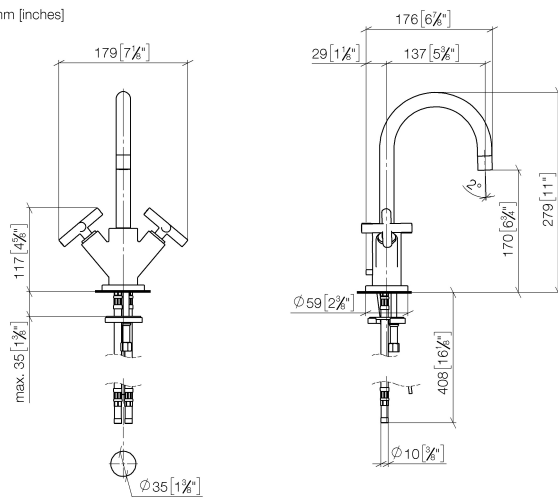
Only suitable for basins with an overflow.

	Brushed Platinum	22 512 892-06
	Chrome	22 512 892-00
	Platinum	22 512 892-08
	Dark Chrome	22 512 892-19
	Brushed Durabronze (23kt Gold)	22 512 892-28
	Matte Black	22 512 892-33
	Brushed Dark Brass	22 512 892-39
	Brushed Bronze	22 512 892-42
	Brushed Champagne (22kt Gold)	22 512 892-46
	Champagne (22kt Gold)	22 512 892-47
	Brushed Chrome	22 512 892-93
	Brushed Dark Platinum	22 512 892-99

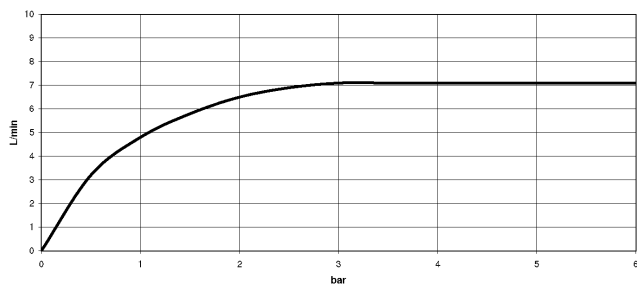


22 512 892 Product version from 6/30/2009 to 5/27/2021

mm [inches]



### Flow rate chart



### Codes & Standards

DIN 4109

EN 200

Executive Order  
no. 1007

ISO 3822

Scottish Water  
Byelaws

UK Water Supply  
Regulations

Ü-Zeichen

VA-Zeichen





TARA Single-hole basin mixer with pop-up waste - Brushed Platinum

TARA

22 512 892 Product version from 6/30/2009 to 5/27/2021

Certificates and sustainability

ETA_18	LGA_18	GDV_0400	WRAS_240702
--------	--------	----------	-------------



22 512 892 Product version from 6/30/2009 to 5/27/2021

Parts for other  
finishes can be found  
here: [Chrome](#)

