



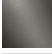
Angle valve - Matte Black

SERIES SPECIFIC

22 901 782 Product version from 3/10/2014 to 5/27/2021

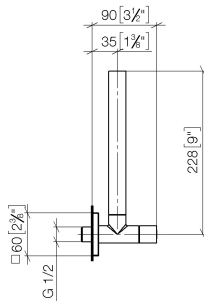


- rosette 60 x 60 mm
- hose covering 200mm, for shortening
- 1/2" connection
- WRAS

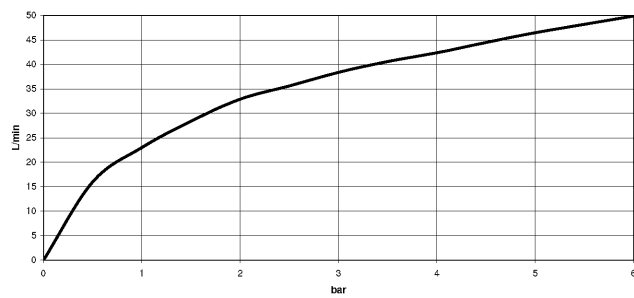
| | | |
|--|-------------------------------|---------------|
|  | Matte Black | 22 901 782-33 |
|  | Chrome | 22 901 782-00 |
|  | Brushed Platinum | 22 901 782-06 |
|  | Platinum | 22 901 782-08 |
|  | Dark Chrome | 22 901 782-19 |
|  | Brushed Durabrass (23kt Gold) | 22 901 782-28 |
|  | Brushed Champagne (22kt Gold) | 22 901 782-46 |
|  | Champagne (22kt Gold) | 22 901 782-47 |
|  | Brushed Chrome | 22 901 782-93 |
|  | Brushed Dark Platinum | 22 901 782-99 |

22 901 782 Product version from 3/10/2014 to 5/27/2021

mm [inches]



Flow rate chart



Codes & Standards

Scottish Water
Byelaws

UK Water Supply
Regulations



Angle valve - Matte Black

SERIES SPECIFIC

22 901 782 Product version from 3/10/2014 to 5/27/2021

Certificates and sustainability

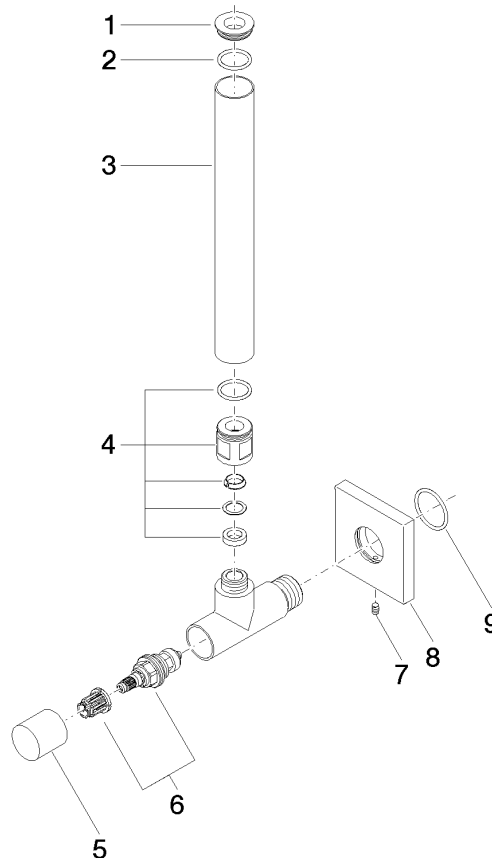
WRAS_2205

Angle valve - Matte Black

SERIES SPECIFIC

22 901 782 Product version from 3/10/2014 to 5/27/2021

Parts for other
finishes can be found
here: [Chrome](#)



Spare parts list

| No. | Item Number | Name | Quantity used | Delivery time |
|--|--------------------|--------------------|---------------|---------------|
| 6 | 90 90 03 006 00 90 | top | 1.00 | 2 |
| 8 | 09 27 78 042-33 | rosette | 1.00 | 30 |
| 5 | 09 20 22 001-33 | handle | 1.00 | 30 |
| 3 | 09 28 22 020-33 | pipe | 1.00 | 30 |
| 7 | 09 31 11 048 90 | pin | 1.00 | 2 |
| 1 | 09 21 22 000-33 | nipple | 1.00 | 30 |
| 4 | 04 24 04 220 01-33 | threaded connector | 1.00 | - |
| Spare part can no longer be ordered, please order the replacement item | | | | |
| 9 | 09 14 10 112 90 | seal | 1.00 | 2 |
| 2 | 90 14 10 010 00 90 | seal | 1.00 | 2 |