


Angle valve - Brushed Chrome

SERIES SPECIFIC

22 901 979
Product version up to 5/27/2021



- rosette Ø 55 mm
- hose covering 200mm, for shortening
- WRAS

	Brushed Chrome	22 901 979-93
	Chrome	22 901 979-00
	Brushed Platinum	22 901 979-06
	Platinum	22 901 979-08
	Durabrass (23kt Gold)	22 901 979-09
	Dark Chrome	22 901 979-19
	Brushed Durabrass (23kt Gold)	22 901 979-28
	Matte Black	22 901 979-33
	Brushed Dark Brass	22 901 979-39
	Brushed Champagne (22kt Gold)	22 901 979-46
	Champagne (22kt Gold)	22 901 979-47
	Brushed Dark Platinum	22 901 979-99

22 901 979 Product version up to 5/27/2021

mm [inches]



Flow rate chart



Codes & Standards

Scottish Water
Byelaws

UK Water Supply
Regulations



Angle valve - Brushed Chrome

SERIES SPECIFIC

22 901 979 Product version up to 5/27/2021

Certificates and sustainability

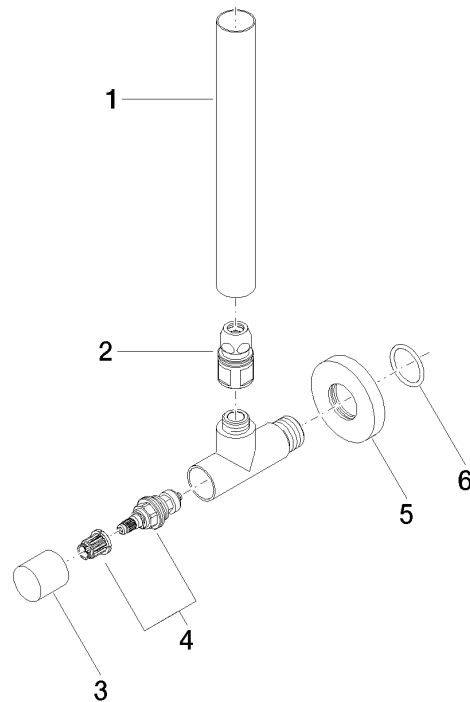
WRAS_2205

Angle valve - Brushed Chrome

SERIES SPECIFIC

22 901 979 Product version up to 5/27/2021

Parts for other
finishes can be found
here: [Chrome](#)



Spare parts list

No.	Item Number	Name	Quantity used	Delivery time
1	09 28 22 020-93	pipe	1.00	20
4	90 90 03 006 00 90	top	1.00	2
6	09 14 10 093 90	seal	1.00	2
2	90 24 03 276 00 90	conversion kit	1.00	2
3	09 20 22 001-93	handle	1.00	20
5	09 27 22 015-93	rosette	1.00	20