

MADISON Two-hole bath mixer for free-standing assembly with hand shower set - Platinum

MADISON

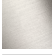

25 943 360



- 245mm projection
- spout: rectangular normal flow
- Hand shower: COMPACT RAIN, max. flow rate 6.8 l/min (at 3 bar)
- hand shower with anti-scale system
- rotary diverter for bath/shower
- wall bracket
- total height 901 mm
- stand pipes height 730 mm
- height up to aerator 610 mm
- slide-on rosettes Ø 90 mm
- gauge 153 mm
- metal shower hose 1250mm with integrated anti-twist protection
- max. flow 51 l/min at 3 bar flow pressure
- WRAS

Intrinsic protection against back flow.

Intrinsic protection against back flow.

| | | |
|-----------------------------------------------------------------------------------|-------------------------------|---------------|
|  | Platinum | 25 943 360-08 |
|  | Chrome | 25 943 360-00 |
|  | Brushed Platinum | 25 943 360-06 |
|  | Durabrand (23kt Gold) | 25 943 360-09 |
|  | Brushed Durabrand (23kt Gold) | 25 943 360-28 |
|  | Brushed Dark Platinum | 25 943 360-99 |

Required miscellaneous



Concealed floor mounting -

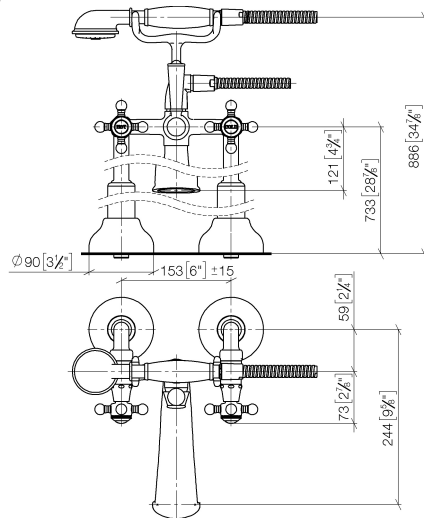
35 944 970 90

- max. recess depth 160 mm
- min. recess depth 80 mm

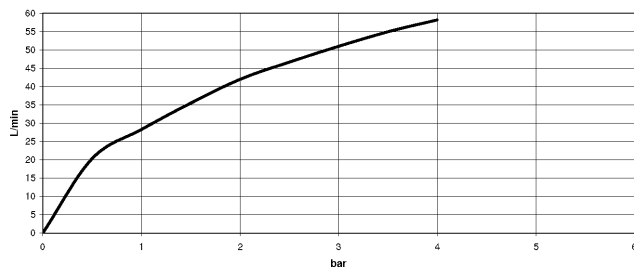
MADISON Two-hole bath mixer for free-standing assembly with hand shower set - Platinum

MADISON

25 943 360
mm [inches]



Flow rate chart



Codes & Standards

ASME A112.18.1

cUPC

EN 1717

Scottish Water
Byelaws

UK Water Supply
Regulations



MADISON Two-hole bath mixer for free-standing assembly with hand shower set - Platinum

MADISON

25 943 360

Certificates and sustainability

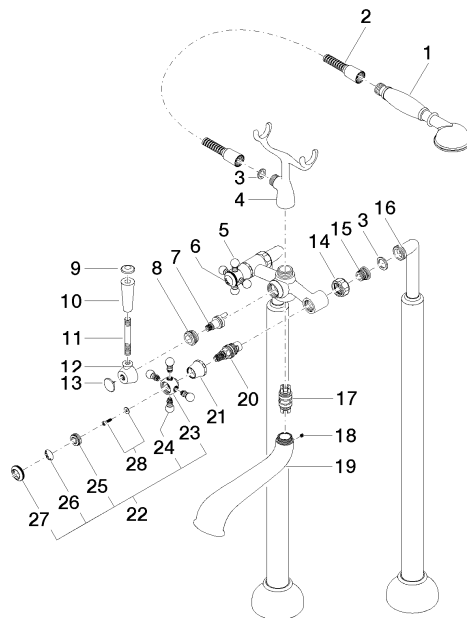
IAPMO_4976

Belgaqua_21-378-2 WRAS_1911

MADISON Two-hole bath mixer for free-standing assembly with hand shower set - Platinum

MADISON

25 943 360





MADISON Two-hole bath mixer for free-standing assembly with hand shower set - Platinum

MADISON

25 943 360

Spare parts list

| No. | Item Number | Name | Quantity used | Delivery time |
|------------------------------------------------------------------------|--------------------|--------------------------------------------------------------------|---------------|---------------|
| 5 | 04 20 36 002 07-08 | handle (hot) | 1.00 | 40 |
| 22 | 04 20 36 002 06-08 | handle (cold) | 1.00 | 40 |
| 10 | 11 170 370-08 | MADISON Lever insert - Platinum | 1.00 | 40 |
| 21 | 09 21 02 055-08 | cover | 2.00 | 40 |
| 23 | 09 20 36 002-08 | handle | 2.00 | 40 |
| 24 | 09 20 36 004-08 | handle | 8.00 | 40 |
| 9 | 09 30 30 062-08 | screw | 1.00 | 40 |
| 26 | 09 26 01 010 90 | accessories | 1.00 | 2 |
| 12 | 09 18 20 011-08 | base | 1.00 | 40 |
| 13 | 09 30 30 064-08 | screw | 1.00 | 40 |
| 2 | 28 104 970-08 | Metal shower hose 1/2" x 1/2" x 1250 mm - Platinum | 1.00 | 40 |
| 16 | 12 943 360-08 | connection | 1.00 | 60 |
| 19 | 13 592 380-08 | spout | 1.00 | 60 |
| 27 | 09 20 36 005-08 | handle | 2.00 | 40 |
| 28 | 04 30 30 029 00 90 | fixing set | 2.00 | 2 |
| 6 | 09 26 01 011 90 | accessories | 1.00 | 2 |
| 14 | 09 23 30 010-08 | nut | 2.00 | 60 |
| 15 | 04 29 05 014 00 90 | nipple | 2.00 | 2 |
| 8 | 09 23 10 007 90 | nut | 1.00 | 2 |
| 25 | 09 20 83 006 90 | handle | 2.00 | 2 |
| 20 | 90 90 03 131 00 90 | top | 2.00 | 2 |
| 1 | 28 002 970-08 | MADISON Metal hand shower with porcelain insert (white) - Platinum | 1.00 | 40 |
| 11 | 09 28 22 013 90 | pipe | 1.00 | 2 |
| 4 | 04 17 20 010 00-08 | holder | 1.00 | - |
| Spare part can no longer be ordered, please order the replacement item | | | | |
| 18 | 90 31 11 030 00 90 | pin | 1.00 | 2 |
| 7 | 90 15 01 001 00 90 | diverter | 1.00 | 2 |
| 17 | 90 21 10 010 00 90 | insert | 1.00 | 2 |
| 3 | 90 14 20 002 00 90 | seal | 1.00 | 2 |