

## VAIA Two-hole bath mixer for free-standing assembly with hand shower set - Platinum

VAIA

25 943 809



- spout: circular, air-enriched flow
- max. flow 24.6 l/min at 3 bar flow pressure
- Hand shower: COMPACT RAIN, max. flow rate 6.8 l/min (at 3 bar)
- hand shower with anti-scale system
- 221mm projection
- pivotable spout 360°
- rotary diverter for bath/shower
- total height 920 mm
- stand pipes height 628 mm
- height up to aerator 816 mm
- slide-on rosettes Ø 100 mm
- gauge 150 mm
- metal shower hose 1250mm with integrated anti-twist protection
- pivotable shower holder on the right foot
- WRAS 240502008, 1802014
- Intrinsic protection against back flow.**

Intrinsic protection against back flow.

	Platinum	25 943 809-08
	Chrome	25 943 809-00
	Brushed Platinum	25 943 809-06
	Dark Chrome	25 943 809-19
	Brushed Durabronze (23kt Gold)	25 943 809-28
	Brushed Bronze	25 943 809-42
	Brushed Champagne (22kt Gold)	25 943 809-46
	Champagne (22kt Gold)	25 943 809-47
	Brushed Dark Platinum	25 943 809-99

### Required miscellaneous



#### **Concealed floor mounting -**

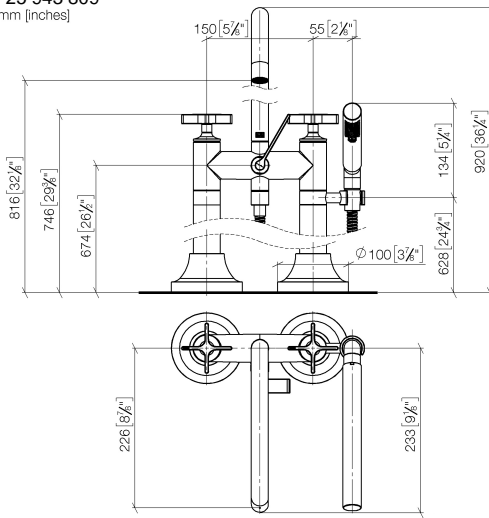
35 944 970 90

- max. recess depth 160 mm
- min. recess depth 80 mm

## VAIA Two-hole bath mixer for free-standing assembly with hand shower set - Platinum

VAIA

25 943 809  
mm [inches]



### Flow rate chart



### Codes & Standards

ASME A112.18.1

cUPC

DIN 4109

EN 1717

ISO 3822

Scottish Water  
Byelaws

UK Water Supply  
Regulations

Ü-Zeichen



## VAIA Two-hole bath mixer for free-standing assembly with hand shower set - Platinum

VAIA

---

25 943 809

Certificates

---

IAPMO\_4976

Belgauqa\_22\_276\_2 LGA\_29

WRAS\_240502

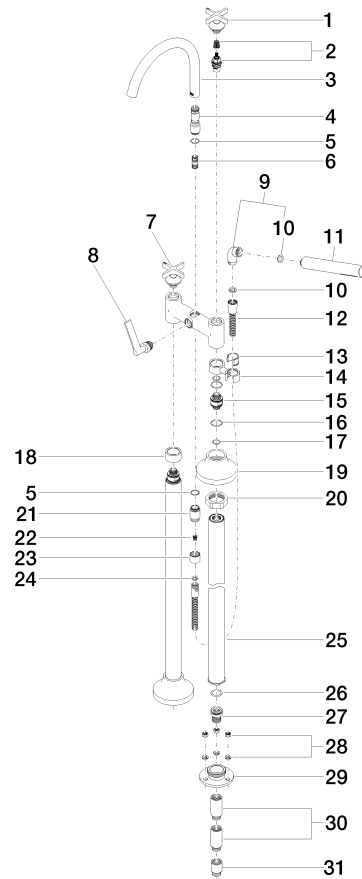
# VAIA Two-hole bath mixer for free-standing assembly with hand shower set - Platinum

VAIA

25 943 809

Product version from 3/13/2017 to 5/27/2021

**Product version from 5/27/2021**





## VAIA Two-hole bath mixer for free-standing assembly with hand shower set - Platinum

VAIA

25 943 809

### Spare parts list

Product version from 3/13/2017 to 5/27/2021

#### Product version from 5/27/2021

No.	Item Number	Name	Quantity used	Delivery time
	90 20 80 010 01-08	handle ( cold )	53	40