

27 502 370



- 225mm projection
- complete hand shower set: normal flow
- spout: circular, air-enriched flow
- complete hand shower set with anti-scale system
- automatic bath/shower diverter
- height of mixer 185 mm
- height up to aerator 140 mm
- hole diameter valve 32 mm
- hole diameter spout 32 mm
- hole diameter for complete hand shower set 32 mm
- rosette for spout Ø 70mm
- rosette for complete hand shower set Ø 60mm
- rosette for deck valve Ø 60mm
- metal shower hose 1750mm with integrated anti-twist protection
- max. spout flow rate 23 l/min
- max. flow for complete hand shower set 6.8 l/min

Intrinsic protection against back flow.

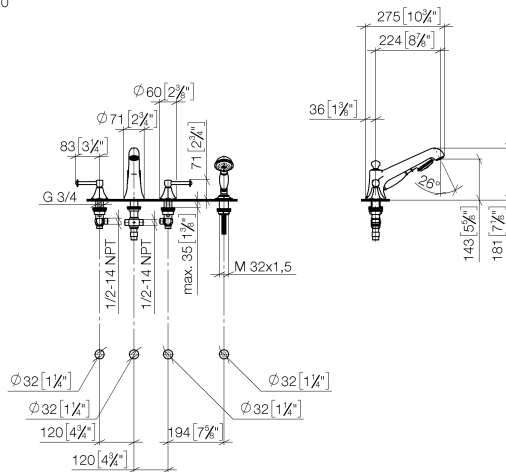
Recommended miscellaneous


Perfecto installation kit -

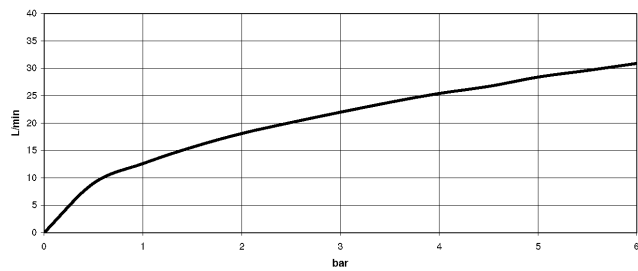
12 614 970 90

27 502 370

mm [inches]
1:10



Flow rate chart



Codes & Standards

DIN 4109

EN 1717

ISO 3822

Ü-Zeichen



MADISON Bath shower set for bath rim or tile edge installation - Platinum

MADISON

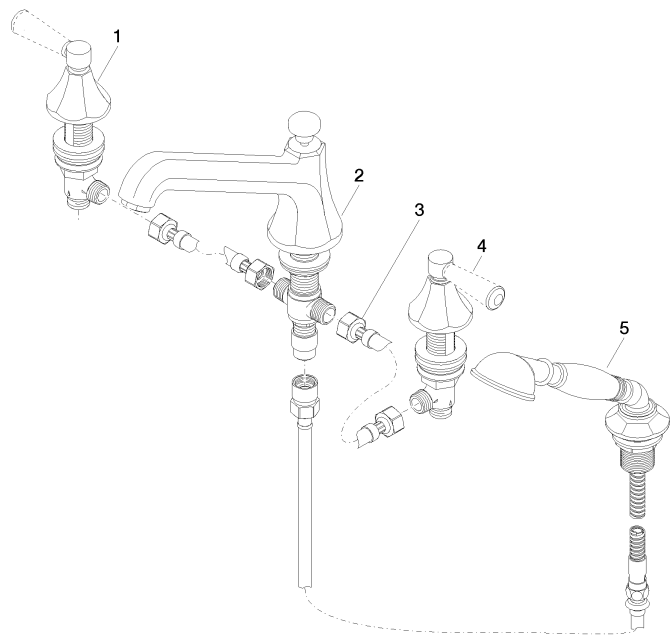
27 502 370

Certificates and sustainability

LGA_8

Belgaqua_21-380-2

27 502 370



Spare parts list

No.	Item Number	Name	Quantity used	Delivery time
3	12 502 970 90	High pressure hose 1/2" x 1/2" x 400 mm -	2.00	2
4	20 000 371-08	side panel	1.00	60
5	27 703 370-08	shower set	1.00	60
2	13 502 380-08	spout	1.00	60
1	20 000 370-08	side panel	1.00	60