

Bidet spray - Brushed Dark Platinum

SERIES SPECIFIC

27 701 670

Product version from 4/1/2024



- wall bracket with integrated safety shut off valve
- max. standing pressure: 5bar
- hand shower with back flow preventer
- 1/2" shower outlet
- rosette Ø 60 mm
- metal shower hose 1250mm with integrated anti-twist protection

This product does not provide intrinsic protection against backflow in accordance with DIN EN 1717. This product must not be installed and operated in countries where compliance with DIN EN 1717 is stipulated.

The bidet shower must be operated with an upstream main fitting.

	Brushed Dark Platinum	27 701 670-99
	Chrome	27 701 670-00
	Brushed Platinum	27 701 670-06
	Platinum	27 701 670-08
	Dark Chrome	27 701 670-19
	Brushed Light Gold	27 701 670-27
	Brushed Durabrass (23kt Gold)	27 701 670-28
	Brushed Dark Brass	27 701 670-39
	Brushed Bronze	27 701 670-42
	Brushed Champagne (22kt Gold)	27 701 670-46
	Champagne (22kt Gold)	27 701 670-47
	Brushed Chrome	27 701 670-93

Recommended miscellaneous



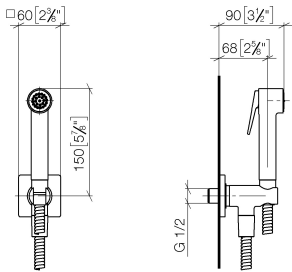
- Concealed wall elbow -

•max. recess depth 163 mm

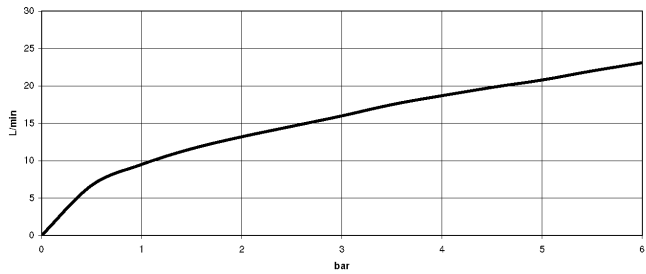
•min. recess depth 90 mm

35 085 970 90

mm [inches]



Flow rate chart



Codes & Standards

DIN 4109

ISO 3822

Ü-Zeichen



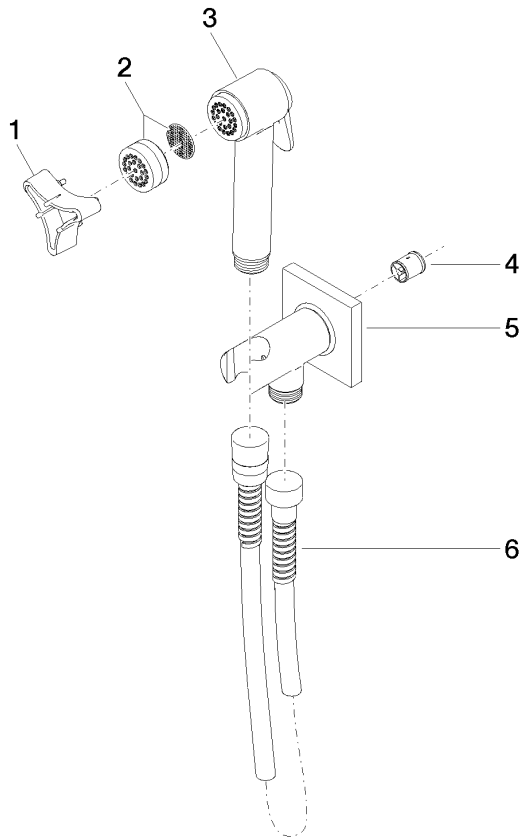
Bidet spray - Brushed Dark Platinum

SERIES SPECIFIC

27 701 670 Product version from 4/1/2024

Certificates and sustainability

LGA_29



Spare parts list

No.	Item Number	Name	Quantity used	Delivery time
1	09 30 09 029 90	key	1.00	2
2	12 861 970-99	accessories	1.00	-
Spare part can no longer be ordered, please order the replacement item				
5	90 11 03 002 00-99	connection	1.00	20
4	09 23 01 097 90	back-flow preventer	1.00	2
6	90 30 02 001 00-99	hose	1.00	20
3	90 12 11 107 00-99	shower	1.00	20