

Hand shower set for bath rim or tile edge installation - Dark Chrome

SERIES SPECIFIC

27 702 980 Product version from 5/15/2020



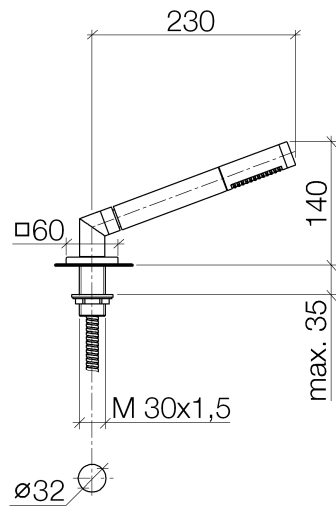
- COMPACT RAIN, max. flow rate 6.8 l/min (at 3 bar)
- with anti-scale system
- rosette 60 x 60 mm
- hole diameter 32 mm
- metal shower hose 1750mm with integrated anti-twist protection
- WRAS

Two-piece design allows hose to later be changed without dismantling the fitting.

Intrinsic protection against back flow.

	Dark Chrome	27 702 980-19
	Chrome	27 702 980-00
	Brushed Platinum	27 702 980-06
	Platinum	27 702 980-08
	Brushed Light Gold	27 702 980-27
	Brushed Durabronze (23kt Gold)	27 702 980-28
	Matte Black	27 702 980-33
	Brushed Champagne (22kt Gold)	27 702 980-46
	Champagne (22kt Gold)	27 702 980-47
	Brushed Chrome	27 702 980-93
	Brushed Dark Platinum	27 702 980-99

27 702 980 Product version from 5/15/2020



Flow rate chart



Codes & Standards

ASME A112.18.1	cUPC	DIN 4109	ISO 3822
Scottish Water Byelaws	UK Water Supply Regulations	Ü-Zeichen	



Hand shower set for bath rim or tile edge installation - Dark Chrome

SERIES SPECIFIC

27 702 980 Product version from 5/15/2020

Certificates and sustainability

LGA_29

IAPMO_4976

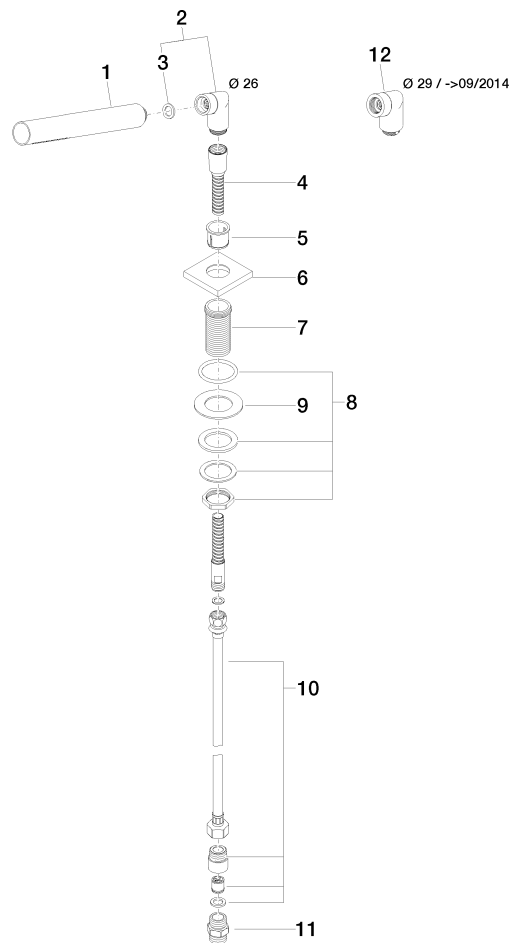
WRAS_2209

Hand shower set for bath rim or tile edge installation - Dark Chrome

SERIES SPECIFIC

27 702 980 Product version from 5/15/2020

Parts for other
finishes can be found
here: [Chrome](#)



Spare parts list

No.	Item Number	Name	Quantity used	Delivery time
7	09 30 01 090-07	sleeve	1.00	30
4	28 322 970-19	Metal shower hose 1/2" x 3/8" x 1750 mm - Dark Chrome	1.00	20
5	90 18 40 085 00 90	sleeve	1.00	2
3	90 14 20 002 00 90	seal	1.00	2
10	12 505 970 90	High pressure hose 1/2" x 3/8" x 500 mm -	1.00	2
12	04 24 04 187 00-19	nipple	1.00	-
Spare part can no longer be ordered, please order the replacement item				
2	04 24 04 287 00-19	nipple	1.00	20
8	04 23 10 032 46 90	fixing set	1.00	2
9	09 30 11 060 90	disc	1.00	2
6	09 27 68 003-19	rosette	1.00	60
11	90 24 03 168 00 90	nipple	1.00	2
1	90 12 11 140 41-19	shower	1.00	20