

27 728 973



- 220mm projection
- pivotable spout 160°
- laminar flow
- height of mixer 100 mm
- height up to water outlet point 57 mm
- without rosette
- max. flow 9.5 l/min at 3 bar flow pressure
- lead-free

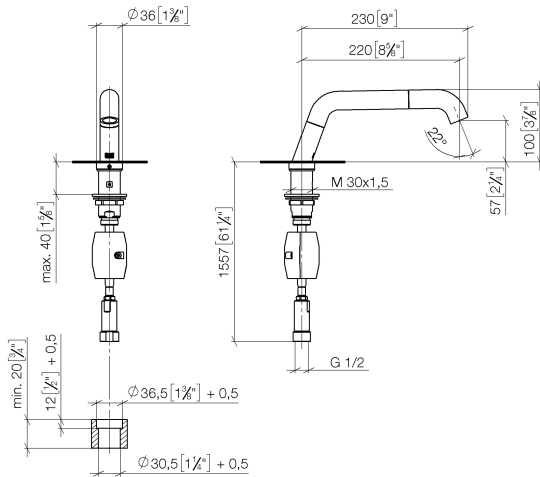
An accurately stepped hole is required for installation and must be prepared in advance by the stonemason or contractor.

Waterproof materials are essential for installation.

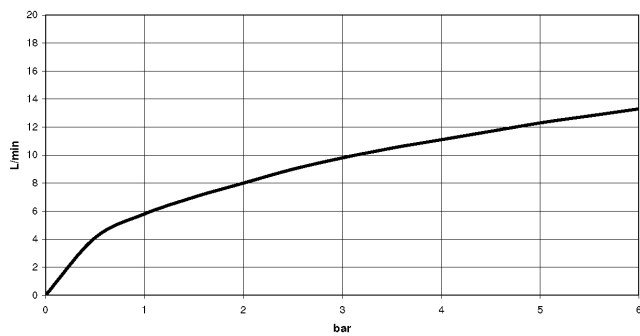
The dimensions for the stepped hole can be found at [www.dornbracht.com/professional](http://www.dornbracht.com/professional)

27 728 973

mm [inches]



**Flow rate chart**



**Codes & Standards**

DIN 4109

EN 1717

ISO 3822

Ü-Zeichen



## Affusion pipe - Brushed Platinum

---

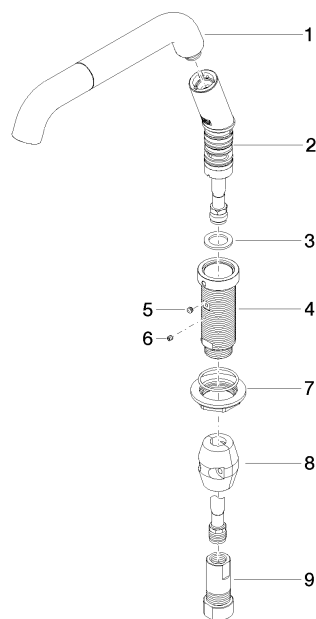
SERIES-VARIOUS

27 728 973

Certificates and sustainability

---

Belgaqua\_21-023-2 LGA\_28



### Spare parts list

No.	Item Number	Name	Quantity used	Delivery time
1	90 28 22 264 00-06	spout	1.00	10
8	04 21 50 005 00 90	accessories	1.00	2
7	04 30 11 038 68 90	fixing set	1.00	2
4	09 30 01 196-06	connection	1.00	10
6	09 31 11 099 90	pin	1.00	2
3	09 14 15 065 90	seal	1.00	2
2	90 28 22 260 00-06	spout	1.00	10
5	90 31 11 063 00 90	pin	1.00	2
9	90 24 03 241 00 90	nipple	1.00	2