

VAIA Rinsing spray set - Chrome

VAIA

27 731 809 Product version from 3/1/2023



- with round rosette
- spray flow
- automatic spout/shower diverter
- height of mixer 202 mm
- hole diameter rinsing spray 32mm
- fabric braided hose 1500 mm
- sprayface with anti-scaling system
- lead-free

Can only be combined with 33810809, 33826809, 19815809, 19825809.

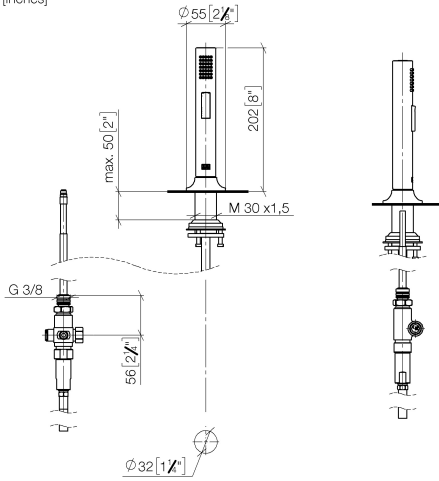
Intrinsic protection against back flow.

Residual water may emerge from the spray after closing.

Operating unit can be positioned freely.

| | | |
|---|-------------------------------|---------------|
|  | Chrome | 27 731 809-00 |
|  | Brushed Platinum | 27 731 809-06 |
|  | Platinum | 27 731 809-08 |
|  | Durabrand (23kt Gold) | 27 731 809-09 |
|  | Dark Chrome | 27 731 809-19 |
|  | Brushed Durabrand (23kt Gold) | 27 731 809-28 |
|  | Matte Black | 27 731 809-33 |
|  | Brushed Bronze | 27 731 809-42 |
|  | Brushed Champagne (22kt Gold) | 27 731 809-46 |
|  | Champagne (22kt Gold) | 27 731 809-47 |
|  | Brushed Chrome | 27 731 809-93 |
|  | Brushed Dark Platinum | 27 731 809-99 |

mm [inches]



Codes & Standards

DIN 4109

EN 1717

ISO 3822

NSF372

NSF61

Ü-Zeichen

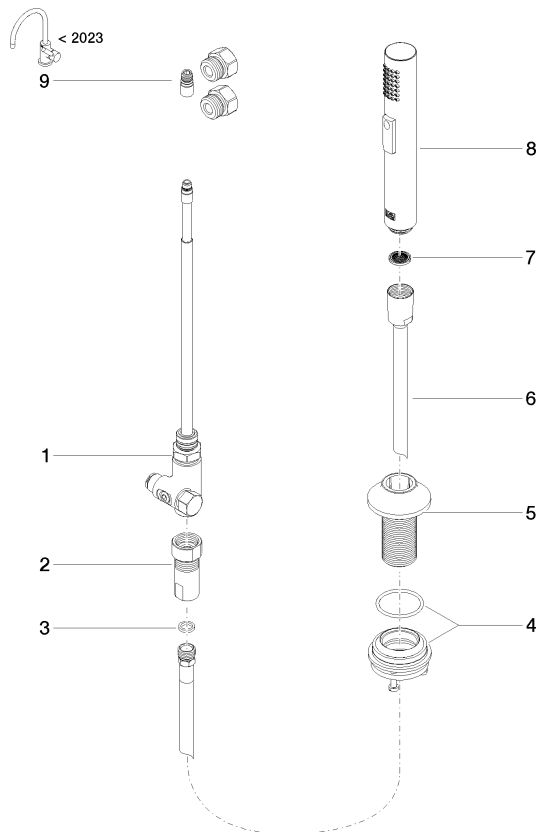
Certificates and sustainability

LGA_29

Belgaqua_24-005-2 IAPMO_N-4976

IAPMO_6397

Parts for other
finishes can be found
here: Brushed
Platinum



Spare parts list

| No. | Item Number | Name | Quantity used | Delivery time |
|-----|--------------------|----------------|---------------|---------------|
| 1 | 90 17 09 046 12 90 | diverter | 1.00 | 2 |
| 8 | 04 12 11 158 00-00 | shower | 1.00 | 10 |
| 4 | 04 23 10 047 00 92 | fixing set | 1.00 | 2 |
| 5 | 90 30 01 142 00-00 | shaft | 1.00 | 10 |
| 2 | 90 24 03 241 00 90 | nipple | 1.00 | 2 |
| 7 | 09 23 01 039 90 | sieve | 1.00 | 2 |
| 3 | 90 14 20 019 00 90 | seal | 1.00 | 2 |
| 6 | 90 30 02 062 00-00 | hose | 1.00 | 10 |
| 9 | 90 17 09 046 14 90 | conversion kit | 1.00 | 2 |