

## WATER TUBE Kneipp wall elbow with hose holder with individual rosettes - Platinum

LULU

27 823 979



Fits: LULU, MADISON, TARA, LISSÉ, VAIA,  
META

- LAMINAR FLOW, max. flow rate 15 l/min (at 3 bar)
- with volume control
- rosette Ø 60 mm
- holder for Kneipp hose
- 1/2" wall elbow
- without hose

Intrinsic protection against back flow.

Product change as of 1.4.2023: max. flow 15 l/min

	Platinum	27 823 979-08
	Chrome	27 823 979-00
	Brushed Platinum	27 823 979-06
	Dark Chrome	27 823 979-19
	Light Gold	27 823 979-26
	Brushed Light Gold	27 823 979-27
	Brushed Durabronze (23kt Gold)	27 823 979-28
	Matte Black	27 823 979-33
	Brushed Bronze	27 823 979-42
	Brushed Champagne (22kt Gold)	27 823 979-46
	Champagne (22kt Gold)	27 823 979-47
	Brushed Chrome	27 823 979-93
	Brushed Dark Platinum	27 823 979-99

### Recommended miscellaneous



- Concealed wall elbow -** 35 085 970 90
- max. recess depth 163 mm
  - min. recess depth 90 mm

### Required miscellaneous



- WATER TUBE Kneipp hose white** 28 285 979-08  
**2000 mm - Platinum**
- with holding ring
  - hose nozzle with sleeve M33

### Required miscellaneous



- WATER TUBE Kneipp hose black** 28 286 979-08  
**2000 mm - Platinum**
- with holding ring
  - hose nozzle with sleeve M33

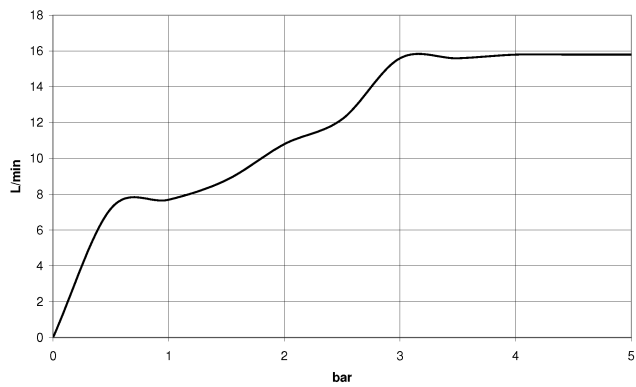
## WATER TUBE Kneipp wall elbow with hose holder with individual rosettes - Platinum

LULU

27 823 979  
mm [inches]



Flow rate chart

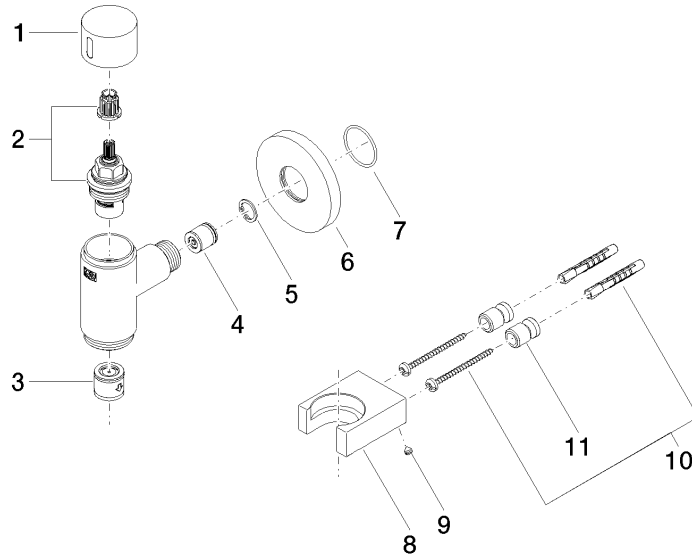


# WATER TUBE Kneipp wall elbow with hose holder with individual rosettes - Platinum

LULU

27 823 979

**Product version from 10/1/2023**





WATER TUBE Kneipp wall elbow with hose holder with individual rosettes -  
Platinum

LULU

27 823 979

**Spare parts list**

**Product version from 10/1/2023**

No.	Item Number	Name	Quantity used	Delivery time
	09 20 97 021-08	handle	11	40