

## WATER TUBE Kneipp wall elbow with hose holder with individual rosettes - Brushed Bronze

LULU

27 823 979



Fits: LULU, MADISON, TARA, LISSÉ, VAIA,  
META

- LAMINAR FLOW, max. flow rate 15 l/min (at 3 bar)
- with volume control
- rosette Ø 60 mm
- holder for Kneipp hose
- 1/2" wall elbow
- without hose

Intrinsic protection against back flow.

Product change as of 1.4.2023: max. flow 15 l/min

|  |                                     |               |
|--|-------------------------------------|---------------|
|    | Brushed Bronze                      | 27 823 979-42 |
|    | Chrome                              | 27 823 979-00 |
|    | Brushed Platinum                    | 27 823 979-06 |
|    | Platinum                            | 27 823 979-08 |
|    | Dark Chrome                         | 27 823 979-19 |
|    | Light Gold                          | 27 823 979-26 |
|    | Brushed Light Gold                  | 27 823 979-27 |
|    | Brushed Durabronze<br>(23kt Gold)   | 27 823 979-28 |
|    | Matte Black                         | 27 823 979-33 |
|   | Brushed<br>Champagne (22kt<br>Gold) | 27 823 979-46 |
|  | Champagne (22kt<br>Gold)            | 27 823 979-47 |
|  | Brushed Chrome                      | 27 823 979-93 |
|  | Brushed Dark<br>Platinum            | 27 823 979-99 |

### Recommended miscellaneous

#### Concealed wall elbow -

35 085 970 90



- max. recess depth 163 mm
- min. recess depth 90 mm

## WATER TUBE Kneipp wall elbow with hose holder with individual rosettes - Brushed Bronze

LULU

27 823 979  
mm [inches]



Flow rate chart

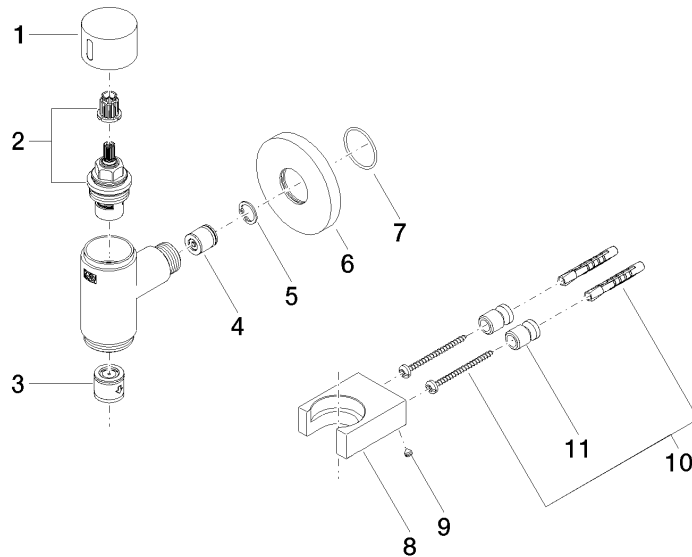


**WATER TUBE Kneipp wall elbow with hose holder with individual rosettes -  
Brushed Bronze**

LULU

27 823 979

**Product version from 10/1/2023**





WATER TUBE Kneipp wall elbow with hose holder with individual rosettes -  
Brushed Bronze

LULU

27 823 979

**Spare parts list**

**Product version from 10/1/2023**

| No. | Item Number     | Name   | Quantity used | Delivery time |
|-----|-----------------|--------|---------------|---------------|
|     | 09 20 97 021-42 | handle | 11            | 60            |