

MADISON Metal hand shower with porcelain insert (white) - Platinum





MADISON

28 002 970 Product version from 7/1/2025

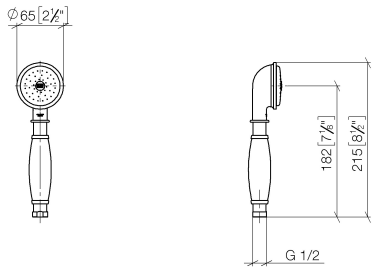


- spray head Ø 64mm
- COMPACT RAIN, max. flow rate 9 l/min (at 3 bar)
- Function from: 6 l/min
- 1/2" connection
- WRAS

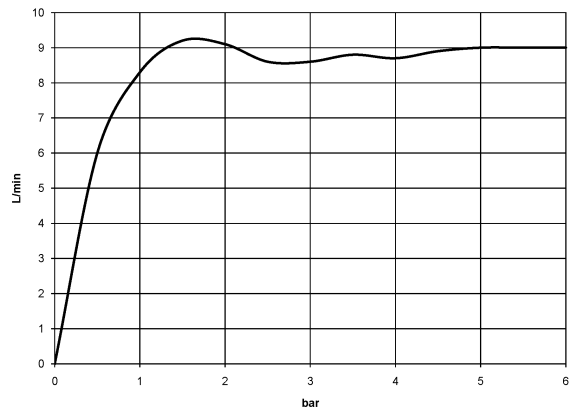
Intrinsic protection against back flow.

| | | |
|---|-------------------------------|--------------------|
|  | Platinum | 28 002 970-08 |
|  | Chrome | 28 002 970-00 |
|  | Chrome | 28 002 970-00 0010 |
|  | Gold (23.9kt) | 28 002 970-01 |
|  | Brushed Platinum | 28 002 970-06 |
|  | Brushed Platinum | 28 002 970-06 0010 |
|  | Platinum | 28 002 970-08 0010 |
|  | Durabrass (23kt Gold) | 28 002 970-09 |
|  | Durabrass (23kt Gold) | 28 002 970-09 0010 |
|  | Brushed Durabrass (23kt Gold) | 28 002 970-28 |
|  | Brushed Durabrass (23kt Gold) | 28 002 970-28 0010 |
|  | Brushed Dark Brass | 28 002 970-39 |
|  | Brushed Dark Brass | 28 002 970-39 0010 |
|  | Brushed Chrome | 28 002 970-93 |
|  | Brushed Chrome | 28 002 970-93 0010 |
|  | Brushed Dark Platinum | 28 002 970-99 |
|  | Brushed Dark Platinum | 28 002 970-99 0010 |

mm [inches]



Flow rate chart



Codes & Standards

| | | | |
|----------|----------|------------------------|-----------------------------|
| DIN 4109 | ISO 3822 | Scottish Water Byelaws | UK Water Supply Regulations |
|----------|----------|------------------------|-----------------------------|

Ü-Zeichen



MADISON Metal hand shower with porcelain insert (white) - Platinum

MADISON

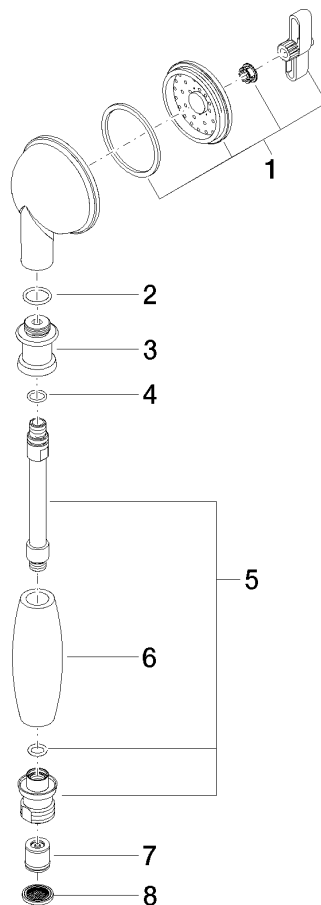
28 002 970 Product version from 7/1/2025

Certificates and sustainability

LGA_8

WRAS_240502

Parts for other
finishes can be found
here: [Chrome](#)



Spare parts list

| No. | Item Number | Name | Quantity used | Delivery time |
|--|--------------------|--------------|---------------|---------------|
| 7 | 09 23 01 077 90 | flow reducer | 1.00 | 2 |
| 1 | 90 12 01 010 00 90 | set | 1.00 | 2 |
| 2 | 09 14 10 069 90 | seal | 1.00 | 2 |
| 5 | 90 28 22 033 00-08 | insert | 1.00 | - |
| Spare part can no longer be ordered, please order the replacement item | | | | |
| 4 | 09 14 10 042 90 | seal | 1.00 | 2 |
| 6 | 11 167 820 60 | handle | 1.00 | 2 |
| 3 | 09 24 04 059 20-08 | nipple | 1.00 | 40 |
| 8 | 09 23 01 039 90 | sieve | 1.00 | 2 |