

VAIA Wall elbow - Platinum









VAIA

28 450 809 Product version from 3/13/2017 to 7/6/2018



- 3/8" shower outlet
- rosette Ø 60 mm
- 1/2" connection
- WRAS

Intrinsic protection against back flow.

	Platinum	28 450 809-08
	Chrome	28 450 809-00
	Brushed Platinum	28 450 809-06
	Dark Chrome	28 450 809-19
	Brushed Durabronze (23kt Gold)	28 450 809-28
	Brushed Dark Brass	28 450 809-39
	Brushed Bronze	28 450 809-42
	Brushed Champagne (22kt Gold)	28 450 809-46
	Champagne (22kt Gold)	28 450 809-47
	Brushed Dark Platinum	28 450 809-99

Recommended miscellaneous



Concealed wall elbow -

35 085 970 90

- max. recess depth 163 mm
- min. recess depth 90 mm

mm [inches]



Flow rate chart



Codes & Standards

ASME A112.18.1	cUPC	EN 1717	Scottish Water Byelaws
----------------	------	---------	---------------------------

UK Water Supply
Regulations



VAIA Wall elbow - Platinum

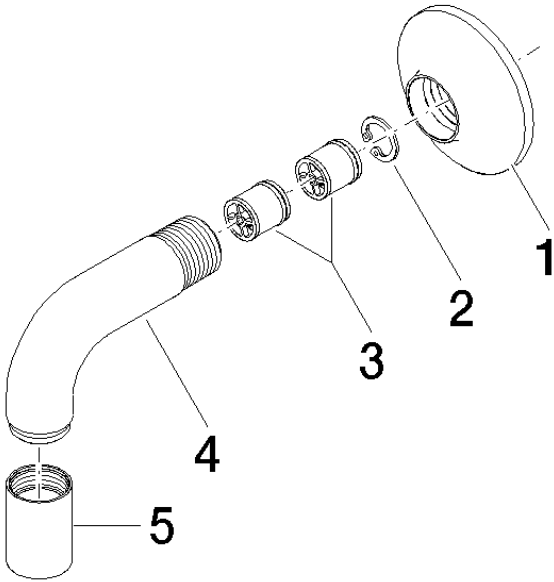
VAIA

28 450 809 Product version from 3/13/2017 to 7/6/2018

Certificates and sustainability

Belgaqua_22_280_2 IAPMO_4976

WRAS_240702



Spare parts list

No.	Item Number	Name	Quantity used	Delivery time
4	09 11 03 123-08	connection	1.00	40
2	09 16 01 014 90	ring	1.00	2
1	90 27 80 021 00-08	rosette	1.00	40
3	90 23 01 040 00 90	back-flow preventer	2.00	2
5	90 21 02 069 00-08	cover	1.00	40