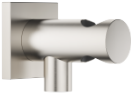


Wall elbow with integrated shower holder - Brushed Platinum

SERIES SPECIFIC

28 490 970    Product version from 6/1/2024



- 3/8" shower outlet
  - rosette 60 x 60 mm
  - 1/2" connection
  - WRAS

Intrinsic protection against back flow.

|   |                               |               |
|---|-------------------------------|---------------|
|    | Brushed Platinum              | 28 490 970-06 |
|    | Chrome                        | 28 490 970-00 |
|    | Platinum                      | 28 490 970-08 |
|    | Dark Chrome                   | 28 490 970-19 |
|    | Brushed Light Gold            | 28 490 970-27 |
|    | Brushed Durabrass (23kt Gold) | 28 490 970-28 |
|    | Matte Black                   | 28 490 970-33 |
|    | Brushed Champagne (22kt Gold) | 28 490 970-46 |
|    | Champagne (22kt Gold)         | 28 490 970-47 |
|   | Brushed Chrome                | 28 490 970-93 |
|  | Brushed Dark Platinum         | 28 490 970-99 |

Recommended miscellaneous



- Concealed wall elbow -

- max. recess depth 163 mm
  - min. recess depth 90 mm

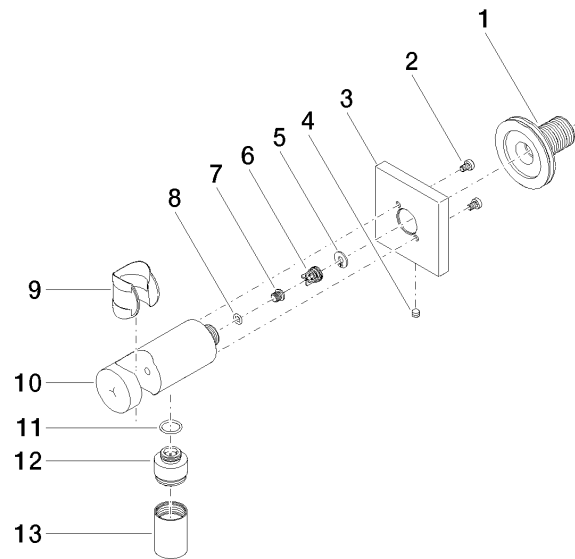
35 085 970 90

mm [inches]



| Codes & Standards |                        |                             |
|-------------------|------------------------|-----------------------------|
| EN 1717           | Scottish Water Byelaws | UK Water Supply Regulations |

| Certificates and sustainability                   |
|---|
| <div>Belgaqua_21-024-2</div> <div>WRAS_1912</div> |



## Spare parts list

| No. | Item Number        | Name                | Quantity used | Delivery time |
|-----|--------------------|---------------------|---------------|---------------|
| 3   | 09 27 97 043-06    | rosette             | 1.00          | 10            |
| 7   | 09 30 30 113 20 90 | screw               | 1.00          | 2             |
| 1   | 90 24 03 280 00 90 | nipple              | 1.00          | 2             |
| 6   | 09 23 01 131 90    | back-flow preventer | 1.00          | 2             |
| 11  | 09 14 10 213 90    | seal                | 1.00          | 2             |
| 12  | 09 24 03 279-06    | nipple              | 1.00          | 10            |
| 5   | 09 16 01 023 90    | ring                | 1.00          | 2             |
| 4   | 09 31 11 112 90    | pin                 | 1.00          | 60            |
| 10  | 09 11 03 124-06    | connection          | 1.00          | 10            |
| 2   | 09 30 30 037 90    | screw               | 2.00          | 2             |
| 8   | 09 14 10 001 90    | seal                | 1.00          | 2             |
| 9   | 09 18 40 216 90    | sleeve              | 1.00          | 2             |
| 13  | 90 21 02 069 00-06 | cover               | 1.00          | 10            |