


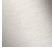


LULU Shower head FlowReduce - Brushed Platinum

28 508 710 Product version from 5/15/2020



- 200mm projection
- ball-joint pivotable through 30°
- Three settings: PURIFY RAIN, COMPACT SOFT FLOW, COMPACT AQUAPRESSURE FLOW, max. flow rate 6.8 l/min (at 3 bar)
- with anti-scale system
- spray head Ø 92mm
- rosette 78 x 55 mm
- 1/2" connection
- Function from: 5 l/min
- This product can help a building meet the requirements of Green Building Rating Systems, e.g. LEED®, BREEAM®, DGNB

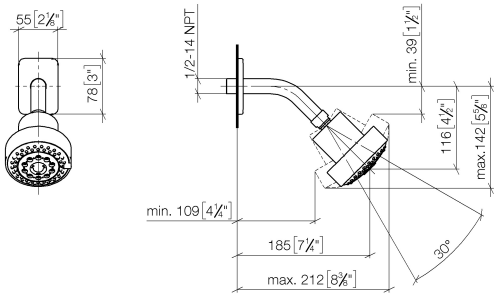
| | | |
|---|------------------|--------------------|
|  | Brushed Platinum | 28 508 710-06 0010 |
|  | Chrome | 28 508 710-00 0010 |
|  | Chrome | 28 508 710-00 |
|  | Brushed Platinum | 28 508 710-06 |



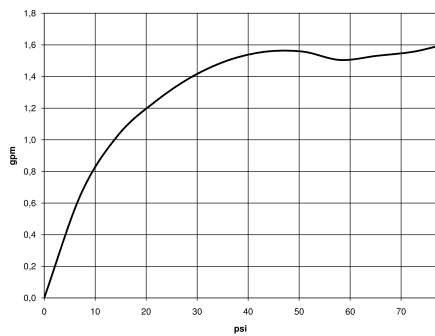
LULU Shower head FlowReduce - Brushed Platinum

28 508 710 Product version from 5/15/2020

mm [inches]



Flow rate chart



Codes & Standards

ASME A112.18.1

cUPC

DIN 4109

ISO 3822

Ü-Zeichen



LULU Shower head FlowReduce - Brushed Platinum

28 508 710 Product version from 5/15/2020

Certificates

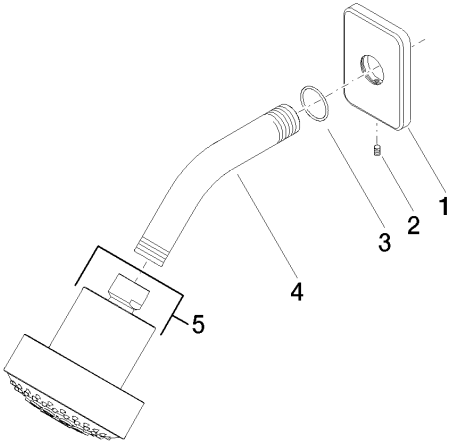
LGA_38

IAPMO_4976

LULU Shower head FlowReduce - Brushed Platinum

28 508 710 Product version from 5/15/2020

Parts for other
finishes can be found
here: [Chrome](#)



Spare parts list

| No. | Item Number | Name | Quantity used | Delivery time |
|-----|--------------------|------------|---------------|---------------|
| 1 | 09 27 71 027-06 | rosette | 1 | 10 |
| 2 | 09 31 11 048 90 | pin | 1 | 2 |
| 3 | 09 14 10 098 90 | seal | 1 | 2 |
| 4 | 09 11 03 011-06 | connection | 1 | 10 |
| 5 | 04 12 11 110 30-06 | shower | 1 | 10 |