

28 518 710



- spray head Ø 55mm
- ball-joint pivotable through 25° (in any direction)
- rain flow
- anti-scale system
- rosette 78 x 55 mm
- 1/2" connection
- max. flow 5 l/min
- This product can help a building meet the requirements of Green Building Rating Systems, e.g. LEED®, BREEAM®, DGNB

### Recommended miscellaneous



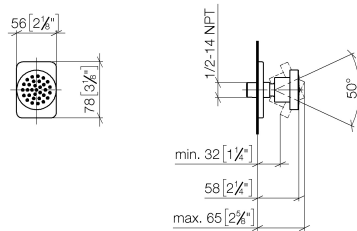
**Concealed wall elbow -**

35 085 970 90

- max. recess depth 163 mm
- min. recess depth 90 mm

28 518 710

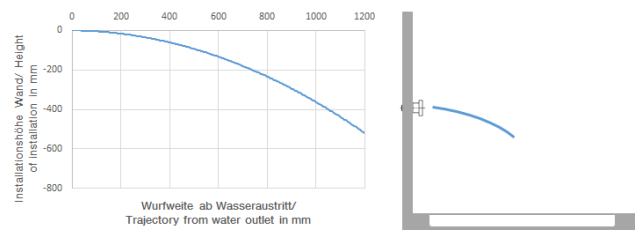
mm [inches]



**Flow rate chart**



**Trajectory diagram**



**Codes & Standards**

ASME A112.18.1

cUPC

DIN 4109

ISO 3822

Ü-Zeichen



## LULU Body spray without volume control FlowReduce - Chrome

---

LULU

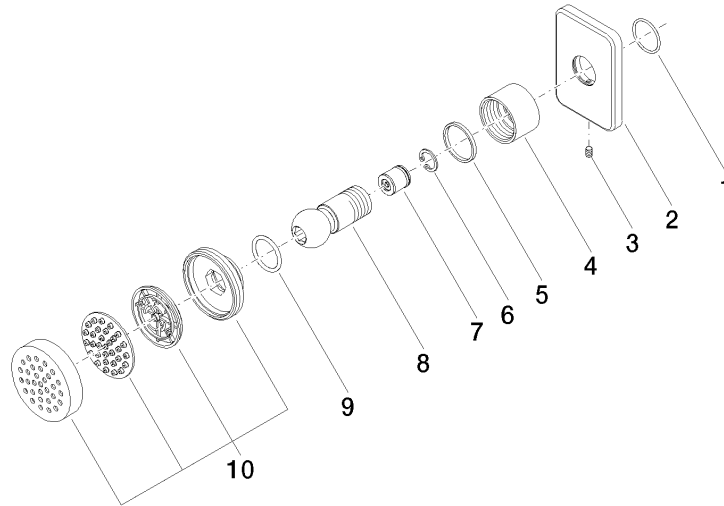
28 518 710

Certificates and sustainability

---

LGA\_38

IAPMO\_4976



## Spare parts list

No.	Item Number	Name	Quantity used	Delivery time
7	09 23 01 048 90	back-flow preventer	1.00	2
10	90 12 05 027 00-00	casing ( completely )	1.00	10
4	09 23 30 026-00	nut	1.00	10
5	09 14 15 010 90	ring	1.00	2
9	09 14 10 015 90	seal	1.00	2
1	09 14 10 098 90	seal	1.00	2
3	09 31 11 048 90	pin	1.00	2
2	09 27 71 004-00	rosette	1.00	10
6	09 16 01 014 90	ring	1.00	2
8	09 21 40 016-00	connection	1.00	10