




28 649 626



- 450mm projection
- rain flow
- with anti-scale system
- rain shower Ø 220 mm
- rosette Ø 60 mm
- 1/2" connection
- max. flow 14 l/min
- quick clearing
- WRAS

	Brushed Chrome	28 649 626-93
	Chrome	28 649 626-00
	Matte Black	28 649 626-33

Required miscellaneous



- Concealed wall elbow -

•min. recess depth 90 mm

•max. recess depth 163 mm

35 085 970 90

28 649 626

mm [inches]



Flow rate chart



Codes & Standards

DIN 4109

ISO 3822

Scottish Water
Byelaws

UK Water Supply
Regulations

Ü-Zeichen



EDITION PRO Rain shower with wall fixing 220 mm - Brushed Chrome

EDITION PRO

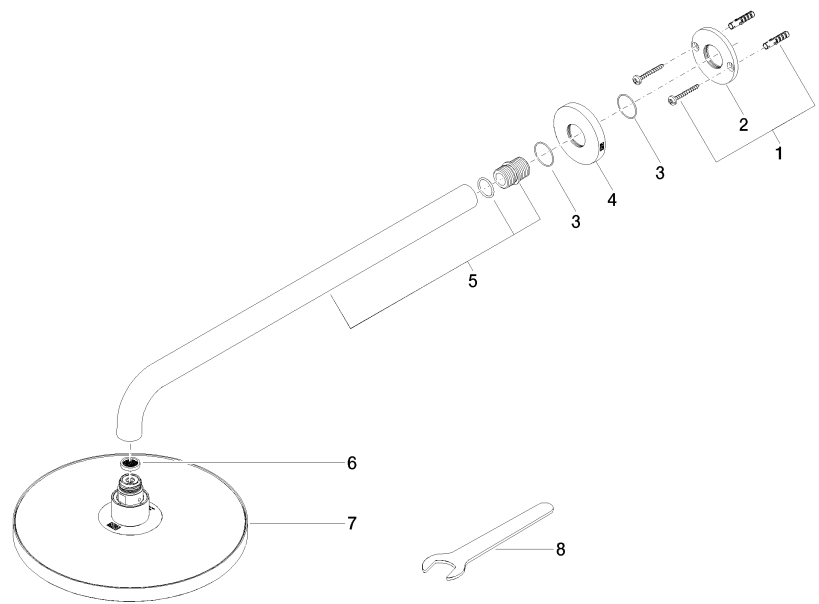
28 649 626

Certificates and sustainability

WRAS_2212

LGA_38

28 649 626



Spare parts list

No.	Item Number	Name	Quantity used	Delivery time
5	90 11 03 070 00-93	pipe	1.00	20
2	09 17 20 120 90	holder	1.00	2
7	04 12 05 092 00-93	shower	1.00	20
4	09 27 97 015-93	rosette	1.00	20
1	04 30 31 032 00 90	fixing set	1.00	2
6	09 23 01 075 90	insert	1.00	2
3	09 14 10 150 90	seal	1.00	2
8	90 30 09 069 00 90	key	1.00	2