

CL.1 Two-way diverter - Chrome

CL.1

29 126 705 Product version from 3/9/2015



- rotary diverter
- hole diameter 37 mm
- rosette 60 x 60 mm
- 1/2" connection
- max. flow 23.5 l/min at 3 bar flow pressure

Not suitable for combining with Perfecto (12 614 970 90).

Not suitable for combining with Perfecto (12 614 970 90).

Required miscellaneous



Hose set -

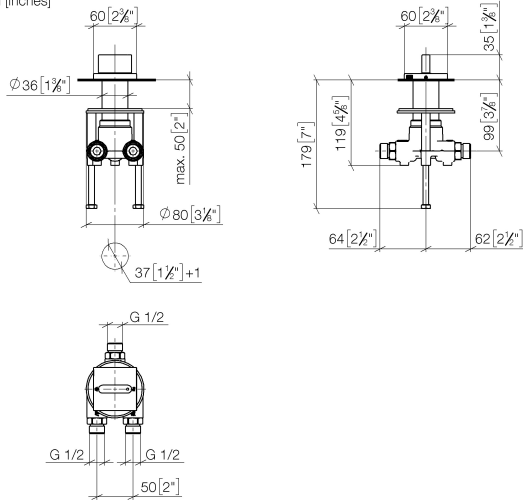
12 509 970 90

CL.1 Two-way diverter - Chrome

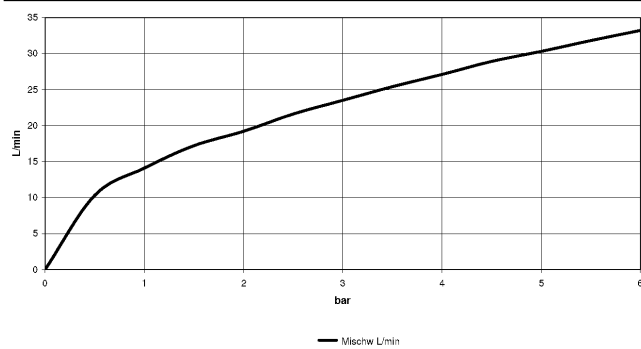
CL.1

29 126 705 Product version from 3/9/2015

mm [inches]



Flow rate chart



Codes & Standards

ASME A112.18.1

cUPC

DIN 4109

ISO 3822

Ü-Zeichen



CL.1 Two-way diverter - Chrome

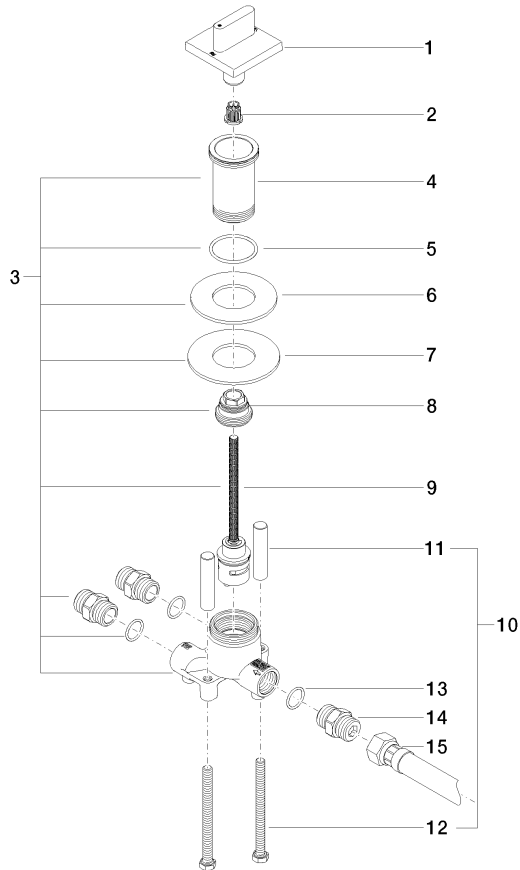
CL.1

29 126 705 Product version from 3/9/2015

Certificates and sustainability

LGA_18

IAPMO_4976



Spare parts list

No.	Item Number	Name	Quantity used	Delivery time
12	09 30 30 153 90	screw	2.00	2
4	09 30 01 209 90	connection	1.00	2
7	09 30 11 136 90	disc	1.00	2
8	09 24 04 223 90	nipple	1.00	2
1	90 20 70 052 01-00	handle	1.00	10
10	04 30 30 153 00 90	fixing set	1.00	2
15	12 503 970 90	High pressure hose 1/2" x 1/2" x 600 mm -	1.00	2
6	09 14 05 059 90	seal	1.00	2
5	09 14 10 038 90	seal	1.00	2
2	90 12 12 002 00 90	fixing cap	1.00	2
9	90 90 03 159 00 90	diverter	1.00	2
3	04 17 01 198 00 90	diverter	1.00	60
11	09 18 40 114 90	sleeve	2.00	2
13	90 14 10 010 00 90	seal	3.00	2
14	90 24 03 168 00 90	nipple	3.00	2