

Two-way diverter - Chrome

SERIES SPECIFIC

29 126 740

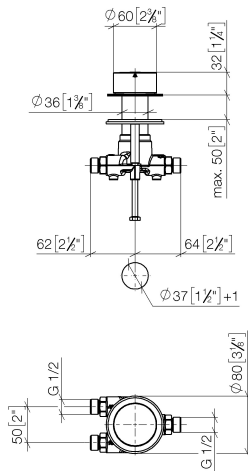


- rotary diverter
- hole diameter 37 mm
- without rosette
- handle Ø 60mm
- 1/2" connection
- max. flow 23.5 l/min at 3 bar flow pressure

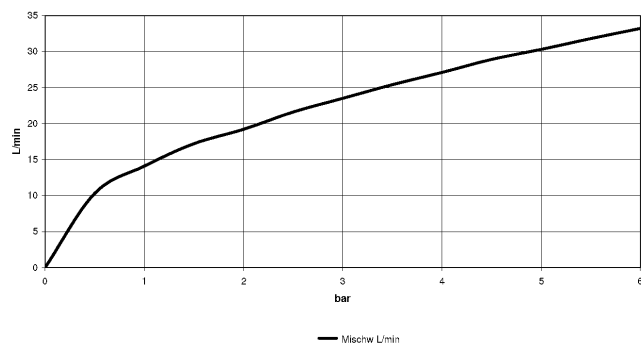
Not suitable for combining with Perfecto (12 614 970 90).

29 126 740

mm [inches]



Flow rate chart



Codes & Standards

ASME A112.18.1

cUPC

DIN 4109

ISO 3822

Ü-Zeichen



Two-way diverter - Chrome

SERIES SPECIFIC

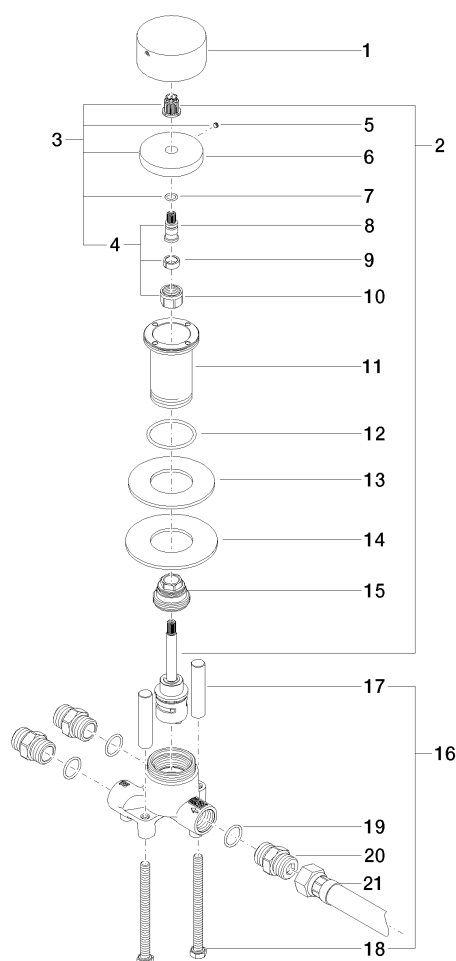
29 126 740

Certificates and sustainability

LGA_18

IAPMO_4976

29 126 740



Spare parts list

| No. | Item Number | Name | Quantity used | Delivery time |
|-----|-----------------------|---|---------------|---------------|
| | 13 09 14 05 059 90 | seal | 1.00 | 2 |
| | 4 04 29 06 020 00-00 | spindle | 1.00 | 10 |
| | 5 09 31 11 055 90 | pin | 1.00 | 2 |
| | 2 90 90 03 161 00 90 | diverter | 1.00 | 2 |
| | 21 12 503 970 90 | High pressure hose 1/2" x 1/2" x 600 mm - | 1.00 | 2 |
| | 8 09 29 06 020-00 | spindle | 1.00 | 10 |
| | 17 09 18 40 114 90 | sleeve | 2.00 | 2 |
| | 16 04 30 30 153 00 90 | fixing set | 1.00 | 2 |
| | 11 09 30 01 105 90 | sleeve | 1.00 | 2 |
| | 18 09 30 30 153 90 | screw | 2.00 | 2 |
| | 3 04 27 74 002 00-00 | rosette | 1.00 | 10 |
| | 12 09 14 10 143 90 | seal | 1.00 | 2 |
| | 14 09 30 11 136 90 | disc | 1.00 | 2 |
| | 1 09 20 74 007-00 | handle | 1.00 | 10 |
| | 15 09 24 04 223 90 | nipple | 1.00 | 2 |
| | 6 09 27 74 002-00 | rosette | 1.00 | 10 |
| | 10 90 23 30 023 00 90 | nut | 1.00 | 2 |
| | 7 90 14 10 060 00 90 | seal | 1.00 | 2 |
| | 9 90 14 15 020 03 90 | ring | 1.00 | 2 |
| | 19 90 14 10 010 00 90 | seal | 3.00 | 2 |
| | 20 90 24 03 168 00 90 | nipple | 3.00 | 2 |