

MADISON Two-way diverter for bath rim or tile edge installation - Brushed Platinum

MADISON

29 140 360 Product version from 6/30/2015

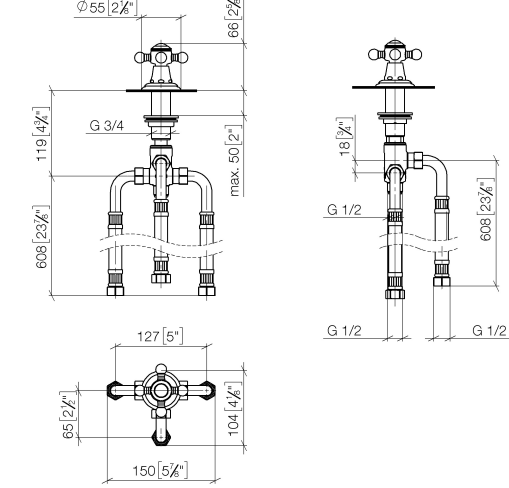


- automatic bath/shower diverter
- hole diameter 32 mm
- rosette Ø 55 mm
- 1/2" connection
- max. flow 64.9 l/min at 3 bar flow pressure

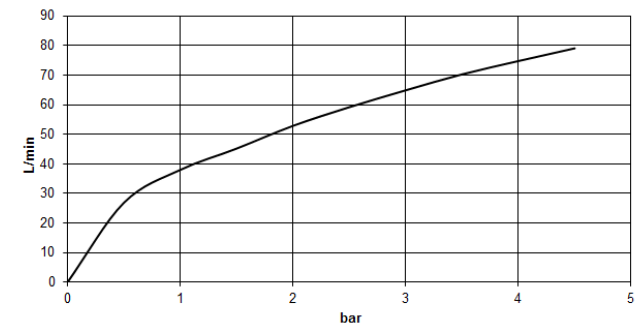
**MADISON Two-way diverter for bath rim or tile edge installation - Brushed
Platinum**

MADISON

29 140 360 Product version from 6/30/2015
mm [inches]



Flow rate chart



Codes & Standards

ASME A112.18.1 cUPC DIN 4109 ISO 3822

Ü-Zeichen



MADISON Two-way diverter for bath rim or tile edge installation - Brushed
Platinum

MADISON

29 140 360 Product version from 6/30/2015

Certificates and sustainability

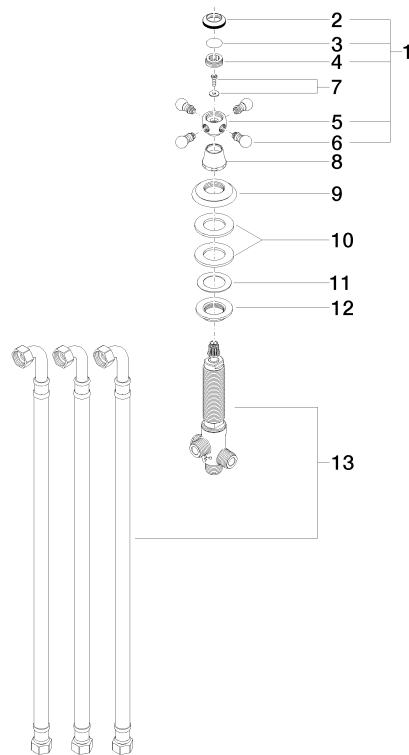
LGA_29

IAPMO_4976

MADISON Two-way diverter for bath rim or tile edge installation - Brushed Platinum

MADISON

29 140 360 Product version from 6/30/2015



Spare parts list

No.	Item Number	Name	Quantity used	Delivery time
7	04 30 30 029 00 90	fixing set	1.00	2
4	09 20 83 006 90	handle	1.00	2
10	09 14 05 014 90	seal	1.00	2
5	09 20 36 002-06	handle	1.00	10
2	09 20 36 005-06	handle	1.00	10
11	09 14 40 002 90	seal	1.00	2
13	90 17 09 051 00 90	diverter	1.00	2
8	09 21 02 055-06	cover	1.00	10
6	09 20 36 004-06	handle	4.00	10
9	09 27 35 001-06	rosette	1.00	10
1	04 20 36 002 08-06	handle	1.00	10
12	09 23 10 004 90	nut	1.00	2
3	09 26 01 016 90	accessories	1.00	2