

## MADISON Two-way diverter for bath rim or tile edge installation - Durabrass (23kt Gold)

---

MADISON

29 140 360 Product version from 6/30/2015

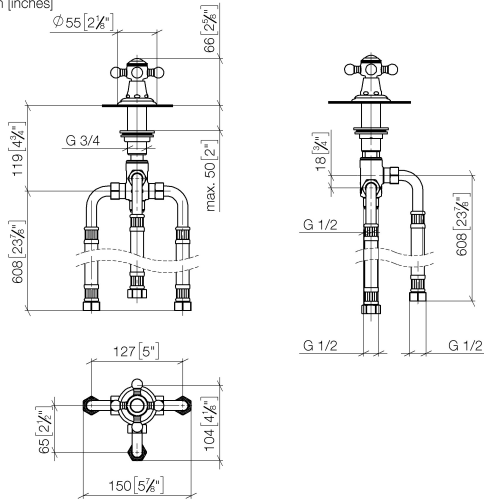


- automatic bath/shower diverter
- hole diameter 32 mm
- rosette Ø 55 mm
- 1/2" connection
- max. flow 64.9 l/min at 3 bar flow pressure

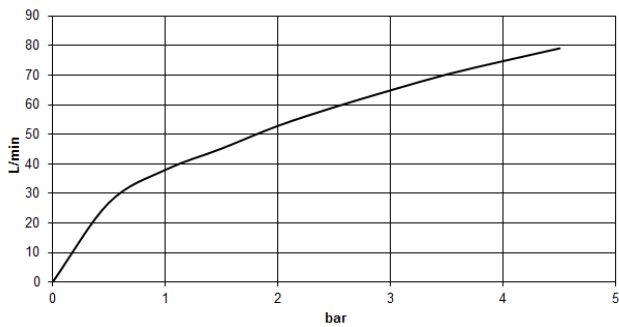
# MADISON Two-way diverter for bath rim or tile edge installation - Durabronss (23kt Gold)

MADISON

29 140 360 Product version from 6/30/2015  
mm [inches]



## Flow rate chart



## Codes & Standards

ASME A112.18.1

cUPC

DIN 4109

ISO 3822

## Ü-Zeichen



## MADISON Two-way diverter for bath rim or tile edge installation - Durabrass (23kt Gold)

MADISON

---

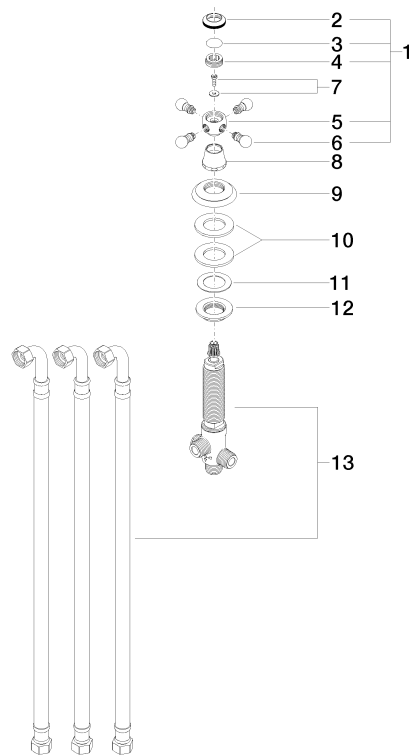
29 140 360 Product version from 6/30/2015

Certificates and sustainability

---

LGA\_29

IAPMO\_4976



## Spare parts list

No.	Item Number	Name	Quantity used	Delivery time
6	09 20 36 004-09	handle	4.00	40
8	09 21 02 055-09	cover	1.00	40
13	90 17 09 051 00 90	diverter	1.00	2
9	09 27 35 001-09	rosette	1.00	40
11	09 14 40 002 90	seal	1.00	2
10	09 14 05 014 90	seal	1.00	2
4	09 20 83 006 90	handle	1.00	2
2	09 20 36 005-09	handle	1.00	40
1	04 20 36 002 08-09	handle	1.00	40
3	09 26 01 016 90	accessories	1.00	2
12	09 23 10 004 90	nut	1.00	2
7	04 30 30 029 00 90	fixing set	1.00	2
5	09 20 36 002-09	handle	1.00	40