

## LULU Two-way diverter for bath rim or tile edge installation - Chrome

LULU

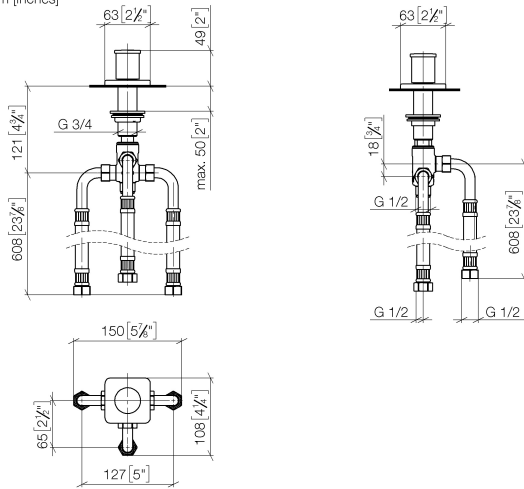
29 140 710 Product version from 6/30/2015



- automatic bath/shower diverter
- hole diameter 32 mm
- rosette 63 x 63 mm
- 1/2" connection
- max. flow 64.9 l/min at 3 bar flow pressure
- WRAS

29 140 710 Product version from 6/30/2015

mm [inches]



### Flow rate chart



### Codes & Standards

|                |      |          |          |
|----------------|------|----------|----------|
| ASME A112.18.1 | cUPC | DIN 4109 | ISO 3822 |
|----------------|------|----------|----------|

|                           |                                |           |
|---------------------------|--------------------------------|-----------|
| Scottish Water<br>Byelaws | UK Water Supply<br>Regulations | Ü-Zeichen |
|---------------------------|--------------------------------|-----------|



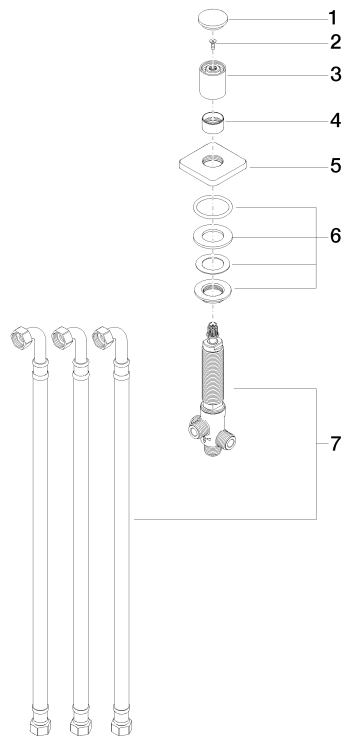
LULU Two-way diverter for bath rim or tile edge installation - Chrome

LULU

29 140 710 Product version from 6/30/2015

Certificates and sustainability

|           |        |            |
|-----------|--------|------------|
| WRAS_1911 | LGA_29 | IAPMO_4976 |
|-----------|--------|------------|



## Spare parts list

| No. | Item Number        | Name       | Quantity used | Delivery time |
|-----|--------------------|------------|---------------|---------------|
| 3   | 09 20 71 002-00    | handle     | 1.00          | 10            |
| 7   | 90 17 09 051 00 90 | diverter   | 1.00          | 2             |
| 5   | 09 27 71 008-00    | rosette    | 1.00          | 10            |
| 6   | 04 23 10 004 03 90 | fixing set | 1.00          | 2             |
| 2   | 90 30 30 014 00 90 | screw      | 1.00          | 2             |
| 1   | 09 20 71 003-00    | handle     | 1.00          | 10            |
| 4   | 09 16 01 012-00    | ring       | 1.00          | 10            |