

VAIA Wall-mounted valve cold water without pop-up waste - Brushed Durabrand (23kt Gold)

VAIA

30 010 809



- 151mm projection
- fixed spout
- adapter with male thread 3/4"
- hole diameter 35 mm
- rosette Ø 60 mm
- max. flow 5.7 l/min
- lead-free
- This product can help a building meet the requirements of Green Building Rating Systems, e.g. LEED®, BREEAM®, DGNB

	Brushed Durabrand (23kt Gold)	30 010 809-28
	Chrome	30 010 809-00
	Brushed Platinum	30 010 809-06
	Platinum	30 010 809-08
	Dark Chrome	30 010 809-19
	Brushed Bronze	30 010 809-42
	Brushed Champagne (22kt Gold)	30 010 809-46
	Champagne (22kt Gold)	30 010 809-47
	Brushed Dark Platinum	30 010 809-99

VAIA Wall-mounted valve cold water without pop-up waste - Brushed Durabron (23kt Gold)

VAIA

30 010 809
mm [inches]



Flow rate chart

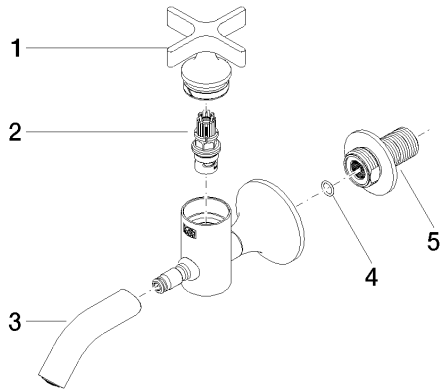


Certificates

LGA_18902.

WRAS_240102003.

30 010 809
Parts for other
finishes can be found
here: Chrome



Spare parts list

No.	Item Number	Name	Quantity used	Delivery time
1	90 20 66 025 00-28	handle	1	20
2	90 90 03 175 00 90	top	1	2
3	90 28 22 381 00-28	spout	1	20
4	90 14 10 060 00 90	seal	1	2
5	09 24 03 269 90	nipple	1	2