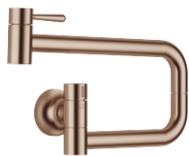


## VAIA POT FILLER Cold-water valve - Brushed Bronze

VAIA

30 805 809 Product version from 7/1/2023



- 500mm projection
- pivoting spout
- laminar flow
- cold water only
- max. flow 5.7 l/min at 3 bar flow pressure
- min. recess depth 125 mm
- max. recess depth 80 mm
- lead-free
- This product can help a building meet the requirements of Green Building Rating Systems, e.g. LEED®, BREEAM®, DGNB
- WRAS

|   |                                |               |
|---|--------------------------------|---------------|
|    | Brushed Bronze                 | 30 805 809-42 |
|    | Chrome                         | 30 805 809-00 |
|    | Brushed Platinum               | 30 805 809-06 |
|    | Platinum                       | 30 805 809-08 |
|    | Durabronze (23kt Gold)         | 30 805 809-09 |
|    | Dark Chrome                    | 30 805 809-19 |
|    | Brushed Durabronze (23kt Gold) | 30 805 809-28 |
|    | Brushed Champagne (22kt Gold)  | 30 805 809-46 |
|    | Champagne (22kt Gold)          | 30 805 809-47 |
|   | Brushed Chrome                 | 30 805 809-93 |
|  | Brushed Dark Platinum          | 30 805 809-99 |

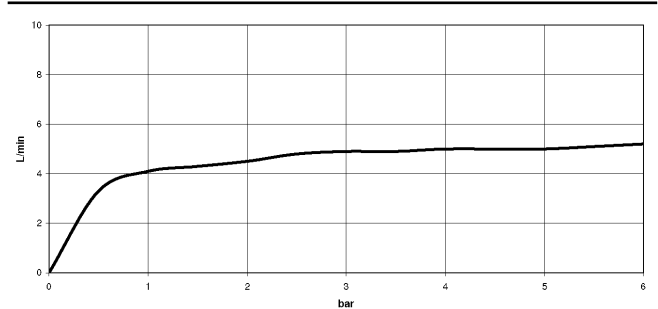
### Required miscellaneous

**POT FILLER Concealed wall elbow** 35 087 970 90



- min. recess depth 80 mm
- max. recess depth 125 mm

Flow rate chart



Codes & Standards

|                |       |                        |                             |
|----------------|-------|------------------------|-----------------------------|
| ASME A112.18.1 | cUPC  | DIN 4109               | ISO 3822                    |
| NSF372         | NSF61 | Scottish Water Byelaws | UK Water Supply Regulations |
| Ü-Zeichen      |       |                        |                             |



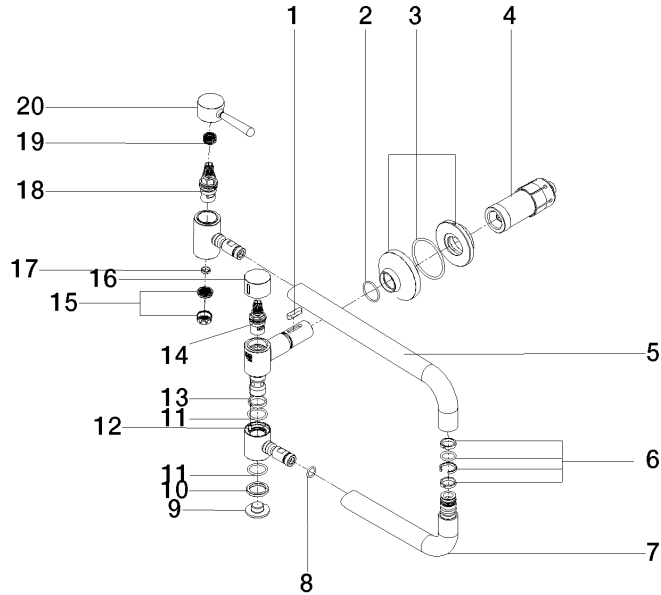
VAIA POT FILLER Cold-water valve - Brushed Bronze

VAIA

30 805 809 Product version from 7/1/2023

Certificates and sustainability

LGA\_29 IAPMO\_N-4976 WRAS\_240702 IAPMO\_6397 IAPMO\_4976 (



## Spare parts list

| No. | Item Number           | Name       | Quantity used | Delivery time |
|-----|-----------------------|------------|---------------|---------------|
|     | 12 09 31 11 109 90    | pin        | 1.00          | 2             |
|     | 14 90 90 03 171 00 90 | top        | 1.00          | 2             |
|     | 7 04 28 22 221 10-42  | pipe       | 1.00          | 60            |
|     | 5 09 28 22 208-42     | pipe       | 1.00          | 60            |
|     | 11 09 14 10 015 90    | seal       | 2.00          | 2             |
|     | 9 09 21 02 028-42     | lid        | 1.00          | 60            |
|     | 18 90 90 03 146 00 90 | top        | 1.00          | 2             |
|     | 2 90 14 10 063 00 90  | seal       | 1.00          | 2             |
|     | 10 09 28 10 139 90    | ring       | 1.00          | 2             |
|     | 13 09 28 10 136 90    | ring       | 1.00          | 2             |
|     | 1 90 16 04 001 00 90  | spring     | 1.00          | 2             |
|     | 20 90 20 80 051 00-42 | handle     | 1.00          | 30            |
|     | 15 09 29 03 089 90    | aerator    | 1.00          | 60            |
|     | 19 90 12 12 232 00 90 | fixing cap | 1.00          | 2             |
|     | 3 90 27 87 039 00-42  | rosette    | 1.00          | 30            |
|     | 4 90 30 01 213 00 90  | connection | 1.00          | 2             |
|     | 8 90 14 10 077 00 90  | seal       | 2.00          | 2             |
|     | 17 09 14 05 002 90    | seal       | 1.00          | 2             |
|     | 16 09 20 62 025-42    | handle     | 1.00          | 60            |
|     | 6 90 28 10 199 00 90  | gasket kit | 1.00          | 2             |