




33 500 626

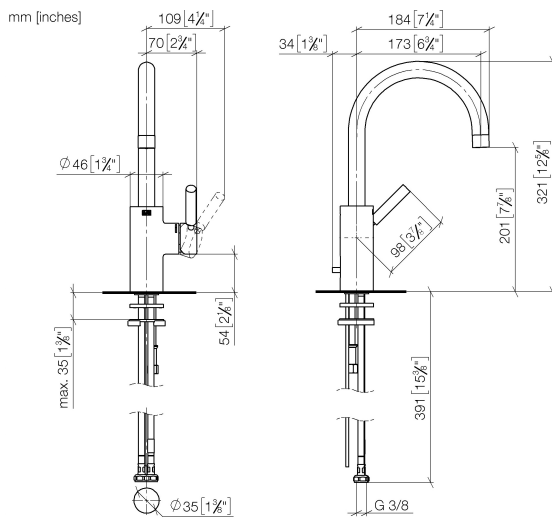


- 173mm projection
- pivotable spout 360°
- circular, air-enriched flow
- height of mixer 321 mm
- height up to aerator 201 mm
- hole diameter 35 mm
- 2x screw-in M 10 x 1 pressure hose, leak-tested
- max. flow 7 l/min
- lead-free
- WRAS

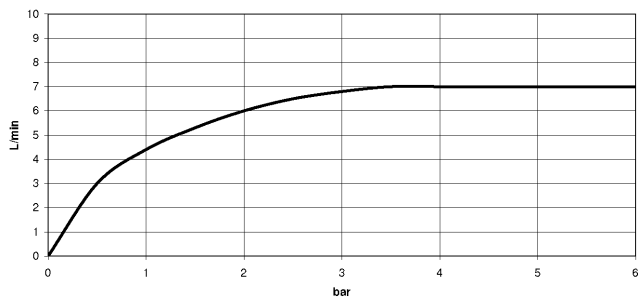
Only suitable for basins with an overflow.

	Matte Black	33 500 626-33
	Chrome	33 500 626-00
	Brushed Chrome	33 500 626-93

33 500 626



Flow rate chart



Codes & Standards

DIN 4109

ISO 3822

Scottish Water
Byelaws

UK Water Supply
Regulations

Ü-Zeichen



EDITION PRO Single-lever basin mixer with pop-up waste - Matte Black

EDITION PRO

33 500 626

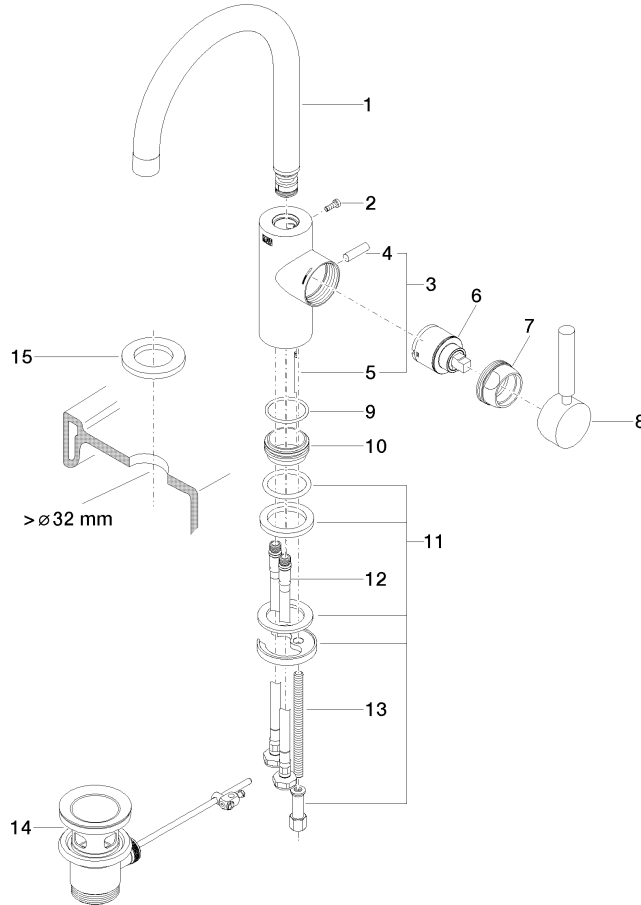
Certificates and sustainability

WRAS_2201

LGA_18

33 500 626

Parts for other
finishes can be found
here: [Chrome](#)



Spare parts list

No.	Item Number	Name	Quantity used	Delivery time
13	09 31 11 012 90	pin	1.00	2
5	09 31 09 080-33	pull-rod	1.00	30
8	90 20 88 046 00-33	handle	1.00	30
1	90 28 22 162 02-33	spout	1.00	30
3	04 20 62 030 80-33	pull-rod	1.00	30
9	09 14 10 119 90	seal	1.00	2
7	09 24 04 107-33	nut	1.00	30
4	09 20 62 030-33	handle	1.00	30
15	12 730 970-33	Rosette for tap hole cover - Matte Black	1.00	30
11	09 28 10 109-07	ring	2.00	30
2	09 30 30 080 90	screw	1.00	2
12	04 30 04 104 00 90	hose	2.00	2
14	90 11 01 001 00-33	pop-up waste	1.00	30
6	90 15 05 045 00 90	cartridge	1.00	2