

## META META SLIM Single-lever basin mixer with pop-up waste - Brushed Chrome


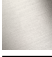



META

33 501 662 Product version up to 1/23/2020



- 125mm projection
- fixed spout
- circular, air-enriched flow
- height of mixer 134 mm
- height up to aerator 52 mm
- hole diameter 35 mm
- 2x screw-in M 8 x 1 pressure hose, leak-tested
- max. flow 5.7 l/min
- lead-free
- This product can help a building meet the requirements of Green Building Rating Systems, e.g. LEED®, BREEAM®, DGNB
- WRAS

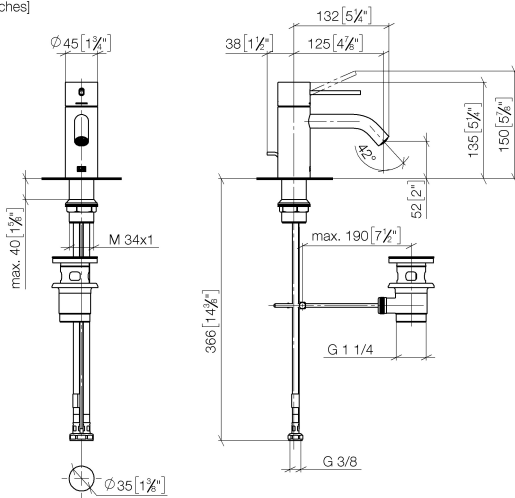
Only suitable for basins with an overflow.

	Brushed Chrome	33 501 662-93
	Chrome	33 501 662-00
	Brushed Platinum	33 501 662-06
	Platinum	33 501 662-08
	Dark Chrome	33 501 662-19
	Light Gold	33 501 662-26
	Brushed Light Gold	33 501 662-27
	Red	33 501 662-29
	Orange	33 501 662-30
	Dark Green	33 501 662-31
	Matte Black	33 501 662-33
	Brushed Dark Brass	33 501 662-39
	Brushed Bronze	33 501 662-42
	Brushed Champagne (22kt Gold)	33 501 662-46
	Champagne (22kt Gold)	33 501 662-47
	Brushed Dark Platinum	33 501 662-99

# META META SLIM Single-lever basin mixer with pop-up waste - Brushed Chrome

META

33 501 662 Product version up to 1/23/2020  
mm [inches]



## Flow rate chart



## Codes & Standards

DIN 4109

ISO 3822

Scottish Water  
Byelaws

UK Water Supply  
Regulations

## Ü-Zeichen



META META SLIM Single-lever basin mixer with pop-up waste - Brushed  
Chrome

META

---

33 501 662 Product version up to 1/23/2020

Certificates and sustainability

---

LGA\_29

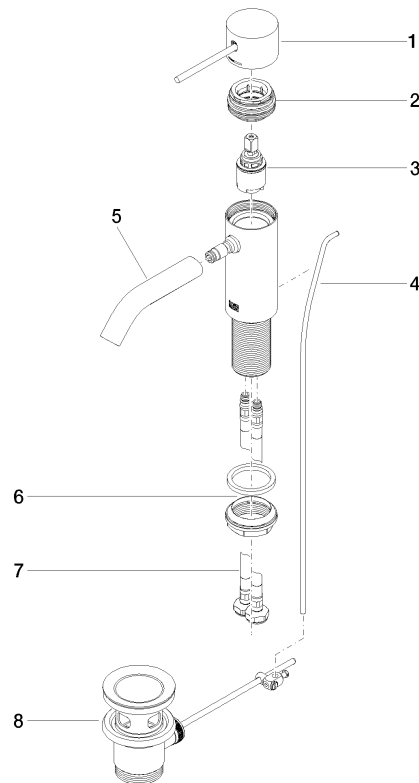
WRAS\_2003

## META META SLIM Single-lever basin mixer with pop-up waste - Brushed Chrome

META

33 501 662 Product version up to 1/23/2020

Parts for other  
finishes can be found  
here: [Chrome](#)



### Spare parts list

No.	Item Number	Name	Quantity used	Delivery time
	4 09 31 09 110-93	pull-rod	1.00	20
	3 90 15 05 044 00 90	cartridge	1.00	2
	2 90 24 04 536 00 90	threaded connector	1.00	60
	7 04 30 04 100 00 90	hose	2.00	2
	1 90 20 66 020 00-93	handle	1.00	20
	6 04 23 10 044 07 90	fixing set	1.00	2
	5 90 11 06 206 00-93	spout	1.00	20
	8 90 11 01 001 00-93	pop-up waste	1.00	20