




33 515 626

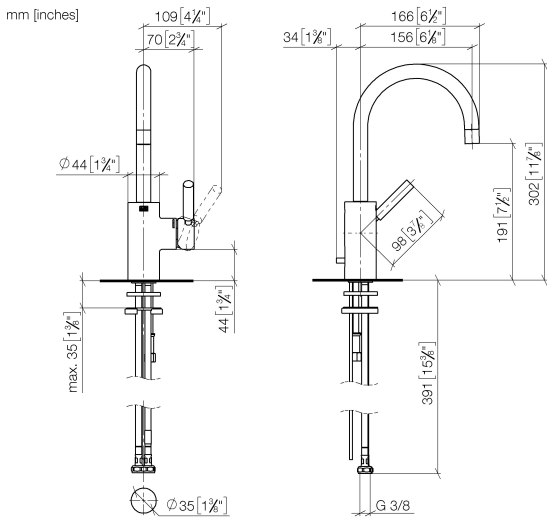


- 156mm projection
- pivotable spout 360°
- circular, air-enriched flow
- height of mixer 302 mm
- height up to aerator 191 mm
- hole diameter 35 mm
- 2x screw-in M 10 x 1 pressure hose, leak-tested
- max. flow 7 l/min
- lead-free
- WRAS

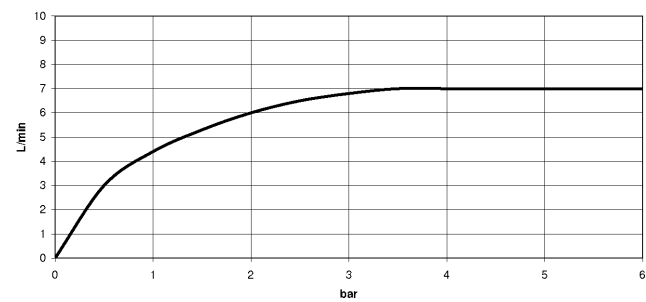
Only suitable for basins with an overflow.

	Chrome	33 515 626-00
	Matte Black	33 515 626-33
	Brushed Chrome	33 515 626-93

33 515 626



Flow rate chart



Codes & Standards

DIN 4109

ISO 3822

Scottish Water
Byelaws

UK Water Supply
Regulations

Ü-Zeichen



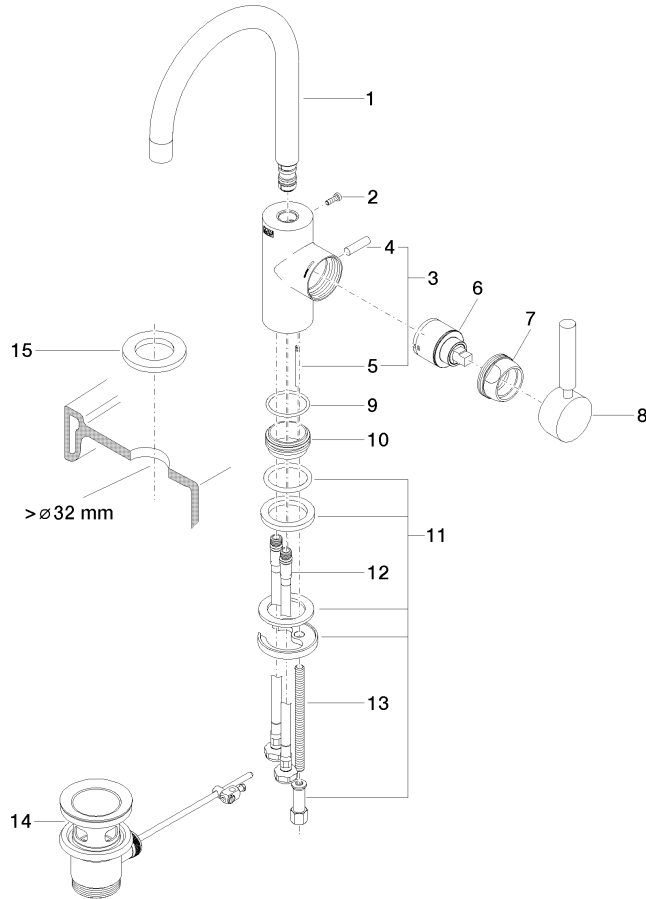
33 515 626

Certificates and sustainability

LGA_19

WRAS_2201

33 515 626



Spare parts list

No.	Item Number	Name	Quantity used	Delivery time
7	09 24 04 107-00	nut	1.00	10
5	09 31 09 080-00	pull-rod	1.00	10
15	12 730 970-00	Rosette for tap hole cover - Chrome	1.00	10
11	09 28 10 109-07	ring	2.00	30
2	09 30 30 080 90	screw	1.00	2
12	04 30 04 104 00 90	hose	2.00	2
8	90 20 88 046 00-00	handle	1.00	10
9	09 14 10 119 90	seal	1.00	2
3	04 20 62 030 80-00	pull-rod	1.00	10
4	09 20 62 030-00	handle	1.00	10
1	90 28 22 237 00-00	spout	1.00	10
13	09 31 11 012 90	pin	1.00	2
14	90 11 01 001 00-00	pop-up waste	1.00	10
6	90 15 05 045 00 90	cartridge	1.00	2