

## MEM Single-lever basin mixer without pop-up waste - Champagne (22kt Gold)

MEM

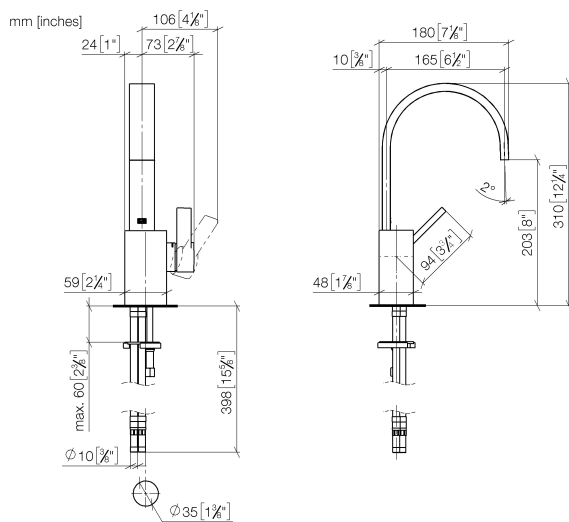
33 521 782 Product version from 5/5/2021



- 165mm projection
- fixed spout
- rectangular, air-enriched flow
- height of mixer 310 mm
- height up to aerator 202 mm
- hole diameter 35 mm
- 2x screw-in M 10 x 1 pressure hose, leak-tested
- max. flow 5.7 l/min
- lead-free
- WRAS
- This product can help a building meet the requirements of Green Building Rating Systems, e.g. LEED®, BREEAM®, DGNB

|                                                                                   |                                |               |
|-----------------------------------------------------------------------------------|--------------------------------|---------------|
|  | Champagne (22kt Gold)          | 33 521 782-47 |
|  | Chrome                         | 33 521 782-00 |
|  | Brushed Platinum               | 33 521 782-06 |
|  | Platinum                       | 33 521 782-08 |
|  | Dark Chrome                    | 33 521 782-19 |
|  | Brushed Durabronze (23kt Gold) | 33 521 782-28 |
|  | Brushed Champagne (22kt Gold)  | 33 521 782-46 |
|  | Brushed Dark Platinum          | 33 521 782-99 |

33 521 782 Product version from 5/5/2021



### Flow rate chart



### Codes & Standards

DIN 4109

EN 817

Executive Order  
no. 1007

ISO 3822

Scottish Water  
Byelaws

UK Water Supply  
Regulations

Ü-Zeichen

VA-Zeichen



MEM Single-lever basin mixer without pop-up waste - Champagne (22kt Gold)

MEM

33 521 782    Product version from 5/5/2021

Certificates and sustainability

|        |        |          |             |
|--------|--------|----------|-------------|
| ETA_18 | LGA_28 | GDV_0400 | WRAS_240202 |
|--------|--------|----------|-------------|

33 521 782 Product version from 5/5/2021

Parts for other  
finishes can be found  
here: [Chrome](#)

