
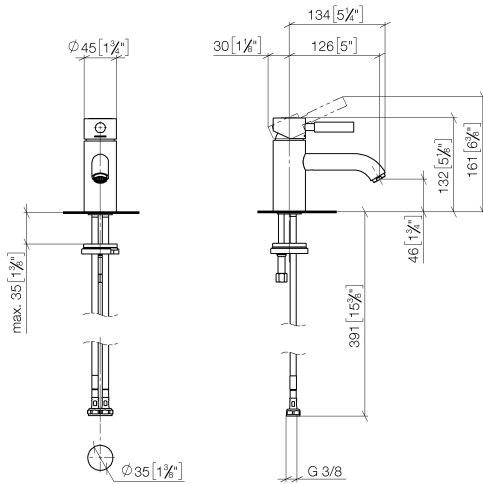


EDITION PRO Single-lever basin mixer without pop-up waste - Brushed Chrome

EDITION PRO

<div>33 526 626</div> <div>  </div>	<ul style="list-style-type: none"> <li>• 126mm projection</li> <li>• fixed spout</li> <li>• circular, air-enriched flow</li> <li>• height of mixer 132 mm</li> <li>• height up to aerator 46 mm</li> <li>• hole diameter 35 mm</li> <li>• 2x screw-in M 10 x 1 pressure hose, leak-tested</li> <li>• max. flow 7 l/min</li> <li>• lead-free</li> <li>• WRAS</li> </ul>	<div> <div></div> <div>Brushed Chrome</div> <div>33 526 626-93</div> </div>
		<div> <div></div> <div>Chrome</div> <div>33 526 626-00</div> </div>
		<div> <div></div> <div>Matte Black</div> <div>33 526 626-33</div> </div>

33 526 626  
mm [inches]



Flow rate chart



### Codes & Standards

DIN 4109

ISO 3822

Scottish Water  
Byelaws

UK Water Supply  
Regulations

Ü-Zeichen



## EDITION PRO Single-lever basin mixer without pop-up waste - Brushed Chrome

---

EDITION PRO

33 526 626

Certificates and sustainability

---

LGA\_9

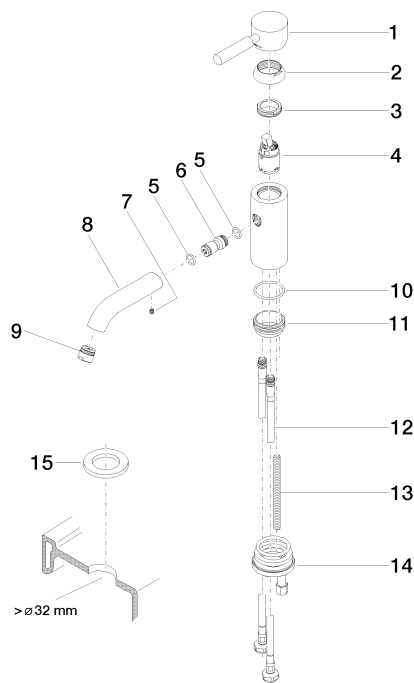
WRAS\_240502

## EDITION PRO Single-lever basin mixer without pop-up waste - Brushed Chrome

EDITION PRO

33 526 626

Parts for other  
finishes can be found  
here: [Chrome](#)



### Spare parts list

No.	Item Number	Name	Quantity used	Delivery time
	5 09 14 10 003 90	seal	1.00	2
	10 09 14 10 119 90	seal	1.00	2
	13 09 31 11 012 90	pin	1.00	2
	14 04 30 11 085 88 90	fixing set	1.00	2
	3 09 24 04 130-07	nut	1.00	30
	9 90 23 01 022 00-93	aerator	1.00	20
	8 09 11 06 059 10-93	spout	1.00	20
	11 09 28 10 109-07	ring	1.00	30
	4 90 15 05 041 00 90	cartridge	1.00	2
	12 04 30 04 104 00 90	hose	2.00	2
	15 12 730 970-93	Rosette for tap hole cover - Brushed Chrome	1.00	10
	6 09 24 04 025 10 90	nipple	1.00	2
	1 90 20 62 046 00-93	handle	1.00	20
	2 09 28 30 008-93	cover	1.00	20
	7 90 31 11 030 00 90	pin	1.00	2