

MEM Single-lever basin mixer without pop-up waste - Brushed Champagne (22kt Gold)

MEM

33 526 782 Product version from 5/5/2021



- 200mm projection
- fixed spout
- rectangular, air-enriched flow
- height of mixer 340 mm
- height up to aerator 216 mm
- hole diameter 35 mm
- 2x screw-in M 10 x 1 pressure hose, leak-tested
- max. flow 5.7 l/min
- lead-free
- WRAS
- This product can help a building meet the requirements of Green Building Rating Systems, e.g. LEED®, BREEAM®, DGNB

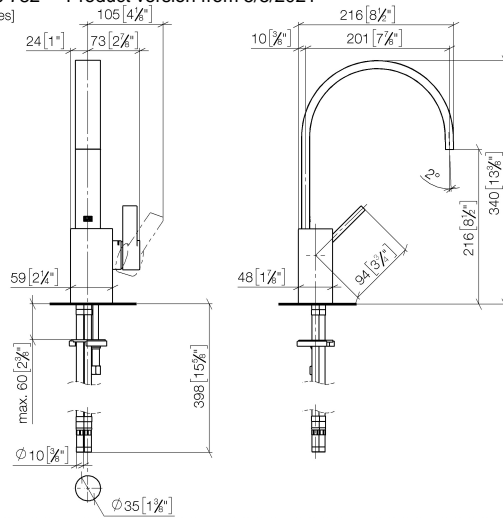
	Brushed Champagne (22kt Gold)	33 526 782-46
	Chrome	33 526 782-00
	Brushed Platinum	33 526 782-06
	Platinum	33 526 782-08
	Dark Chrome	33 526 782-19
	Brushed Durabronze (23kt Gold)	33 526 782-28
	Brushed Dark Brass	33 526 782-39
	Champagne (22kt Gold)	33 526 782-47
	Brushed Dark Platinum	33 526 782-99

MEM Single-lever basin mixer without pop-up waste - Brushed Champagne (22kt Gold)

MEM

33 526 782 Product version from 5/5/2021

mm [inches]



Flow rate chart



Codes & Standards

DIN 4109	EN 817	Executive Order no. 1007	ISO 3822
Scottish Water Byelaws	UK Water Supply Regulations	Ü-Zeichen	VA-Zeichen



MEM Single-lever basin mixer without pop-up waste - Brushed Champagne
(22kt Gold)

MEM

33 526 782 Product version from 5/5/2021

Certificates and sustainability

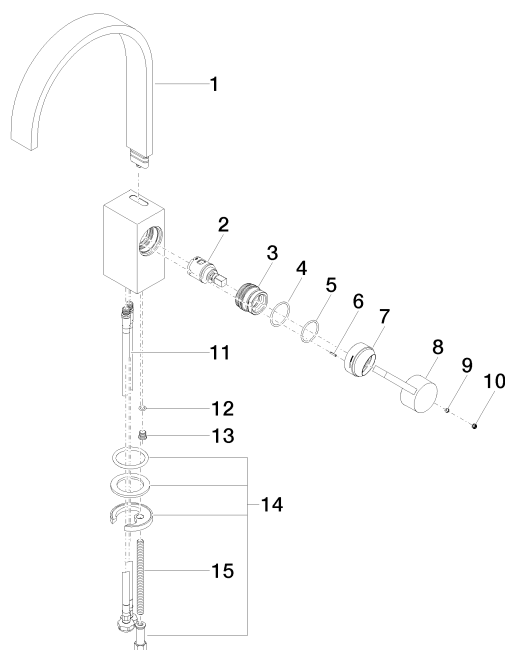
ETA_18	LGA_28	GDV_0400	WRAS_240202
--------	--------	----------	-------------

MEM Single-lever basin mixer without pop-up waste - Brushed Champagne (22kt Gold)

MEM

33 526 782 Product version from 5/5/2021

Parts for other
finishes can be found
here: [Chrome](#)



Spare parts list

No.	Item Number	Name	Quantity used	Delivery time
14	04 30 11 038 75 90	fixing set	1.00	2
7	09 28 30 028-46	cover	1.00	30
13	09 31 20 027 10-00	plug	1.00	10
4	09 14 10 137 90	seal	1.00	2
15	09 31 11 012 90	pin	1.00	2
11	04 30 04 104 00 90	hose	2.00	2
6	09 31 11 152 90	pin	1.00	2
8	09 20 78 057-46	handle	1.00	30
2	90 15 05 042 00 90	cartridge	1.00	2
3	09 24 04 288 90	nut	1.00	2
12	09 14 10 132 90	seal	1.00	2
1	90 28 22 152 01-46	spout	1.00	30
9	90 31 11 063 00 90	pin	1.00	2
5	90 14 10 063 00 90	seal	1.00	2
10	90 31 20 109 00 90	plug	1.00	2