

## IMO Single-lever basin mixer with raised base without pop-up waste - Brushed Platinum

---

IMO

33 537 670 Product version up to 10/10/2018



- 165mm projection
- fixed spout
- rectangular, air-enriched flow
- height of mixer 358 mm
- height up to aerator 247 mm
- hole diameter 35 mm
- 2x screw-in M 10 x 1 pressure hose, leak-tested
- max. flow 7 l/min
- lead-free
- This product can help a building meet the requirements of Green Building Rating Systems, e.g. LEED®, BREEAM®, DGNB

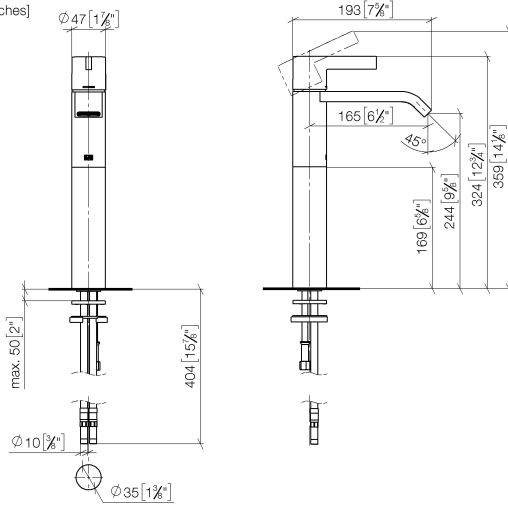
for use on countertop bowls

# IMO Single-lever basin mixer with raised base without pop-up waste - Brushed Platinum

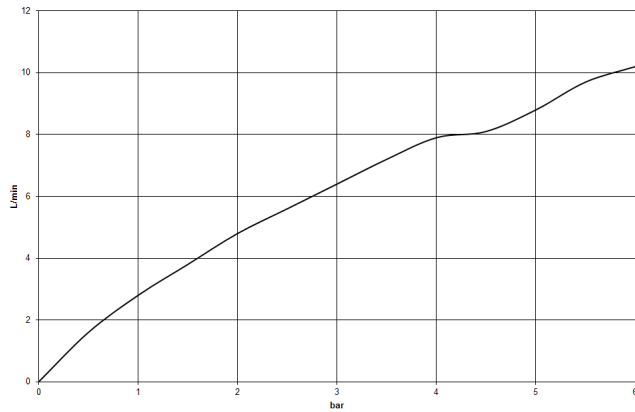
IMO

33 537 670 Product version up to 10/10/2018

mm [inches]



## Flow rate chart



## Codes & Standards

DIN 4109

EN 817

Executive Order  
no. 1007

ISO 3822

Ü-Zeichen

VA-Zeichen



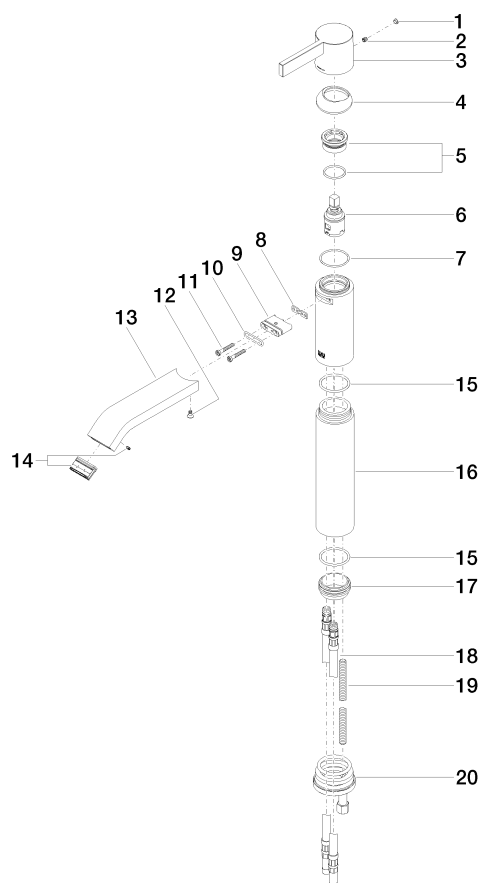
IMO Single-lever basin mixer with raised base without pop-up waste - Brushed  
Platinum

IMO

33 537 670    Product version up to 10/10/2018

Certificates and sustainability

|        |        |          |
|--------|--------|----------|
| ETA_19 | LGA_19 | GDV_0400 |
|--------|--------|----------|



## Spare parts list

| No. | Item Number           | Name       | Quantity used | Delivery time |
|-----|-----------------------|------------|---------------|---------------|
|     | 8 09 14 03 131 90     | seal       | 1.00          | 2             |
|     | 15 09 14 10 119 90    | seal       | 1.00          | 2             |
|     | 10 09 14 10 053 90    | seal       | 1.00          | 2             |
|     | 3 09 20 67 003-06     | handle     | 1.00          | 10            |
|     | 4 09 28 30 019-06     | cover      | 1.00          | 10            |
|     | 13 09 28 22 240-06    | spout      | 1.00          | 10            |
|     | 12 09 30 30 116 90    | screw      | 1.00          | 2             |
|     | 19 09 31 11 095 90    | pin        | 1.00          | 2             |
|     | 16 09 28 22 244 20-06 | pipe       | 1.00          | 10            |
|     | 17 09 28 10 109-07    | ring       | 1.00          | 30            |
|     | 20 04 30 11 085 88 90 | fixing set | 1.00          | 2             |
|     | 11 09 30 30 084 90    | screw      | 2.00          | 2             |
|     | 9 09 11 03 061 90     | connection | 1.00          | 2             |
|     | 7 09 14 10 102 90     | seal       | 1.00          | 2             |
|     | 14 90 29 03 045 00 90 | aerator    | 1.00          | 2             |
|     | 18 04 30 04 017 00 90 | hose       | 2.00          | 60            |
|     | 1 90 31 20 087 00-06  | plug       | 1.00          | 10            |
|     | 5 90 23 10 066 00 90  | nut        | 1.00          | 2             |
|     | 6 90 15 05 042 00 90  | cartridge  | 1.00          | 2             |
|     | 2 90 31 11 030 00 90  | pin        | 1.00          | 2             |