


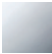


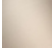
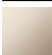
CL.1 Single-lever bidet mixer without pop-up waste - Brushed Dark Platinum

CL.1

33 600 705

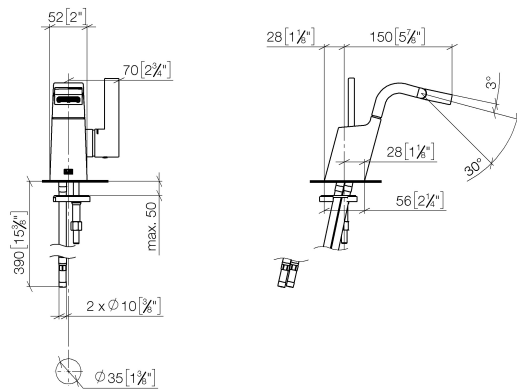


- 145mm projection
- pivotable spout 30°
- rectangular, air-enriched flow
- height of mixer 190 mm
- height up to aerator 113 mm
- hole diameter 35 mm
- 2x screw-in M 8 x 1 pressure hose, leak-tested
- max. flow 6 l/min
- WRAS 1804014

|   |                               |               |
|---|-------------------------------|---------------|
|  | Brushed Dark Platinum         | 33 600 705-99 |
|  | Chrome                        | 33 600 705-00 |
|  | Brushed Platinum              | 33 600 705-06 |
|  | Dark Chrome                   | 33 600 705-19 |
|  | Brushed Champagne (22kt Gold) | 33 600 705-46 |
|  | Champagne (22kt Gold)         | 33 600 705-47 |

33 600 705

mm [inches]



### Flow rate chart



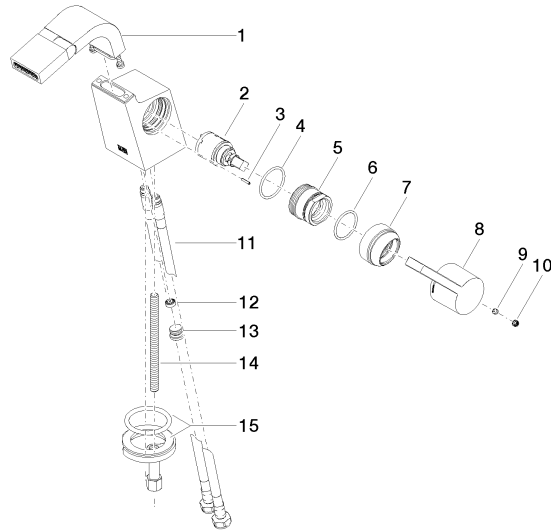
### Certificates

LGA\_38157.

WRAS\_1804014.

33 600 705

Parts for other  
finishes can be found  
here: [Chrome](#)



## Spare parts list

| No. | Item Number        | Name         | Quantity used | Delivery time |
|-----|--------------------|--------------|---------------|---------------|
| 1   | 90 11 70 004 00-99 | spout        | 1             | 30            |
| 2   | 90 15 05 042 00 90 | cartridge    | 1             | 2             |
| 3   | 09 31 11 152 90    | pin          | 1             | 2             |
| 4   | 09 14 10 137 90    | seal         | 1             | 2             |
| 5   | 09 24 04 294 90    | sleeve       | 1             | 2             |
| 6   | 90 14 10 063 00 90 | seal         | 1             | 2             |
| 7   | 09 28 30 029-99    | cover        | 1             | 30            |
| 8   | 09 20 67 010-99    | handle       | 1             | 30            |
| 9   | 90 31 11 030 00 90 | pin          | 1             | 2             |
| 10  | 90 31 20 109 00 90 | plug         | 1             | 2             |
| 11  | 04 30 04 100 00 90 | hose         | 2             | 2             |
| 12  | 09 23 01 034 90    | flow reducer | 1             | 2             |
| 13  | 04 31 20 039 11 90 | plug         | 1             | 2             |
| 14  | 09 31 11 012 90    | pin          | 1             | 2             |
| 15  | 04 30 11 038 75 90 | fixing set   | 1             | 2             |