

## VAIA BAR TAP Single-lever mixer - Brushed Dark Platinum

VAIA

33 805 809



- 167mm projection
- pivotable spout 360°
- air-enriched flow
- max. flow 7 l/min at 3 bar flow pressure
- lead-free
- This product can help a building meet the requirements of Green Building Rating Systems, e.g. LEED®, BREEAM®, DGNB

|  |                               |               |
|--|-------------------------------|---------------|
|    | Brushed Dark Platinum         | 33 805 809-99 |
|    | Chrome                        | 33 805 809-00 |
|    | Brushed Platinum              | 33 805 809-06 |
|    | Platinum                      | 33 805 809-08 |
|    | Durabrand (23kt Gold)         | 33 805 809-09 |
|    | Dark Chrome                   | 33 805 809-19 |
|    | Brushed Durabrand (23kt Gold) | 33 805 809-28 |
|    | Matte Black                   | 33 805 809-33 |
|    | Brushed Champagne (22kt Gold) | 33 805 809-46 |
|   | Champagne (22kt Gold)         | 33 805 809-47 |
|  | Brushed Chrome                | 33 805 809-93 |

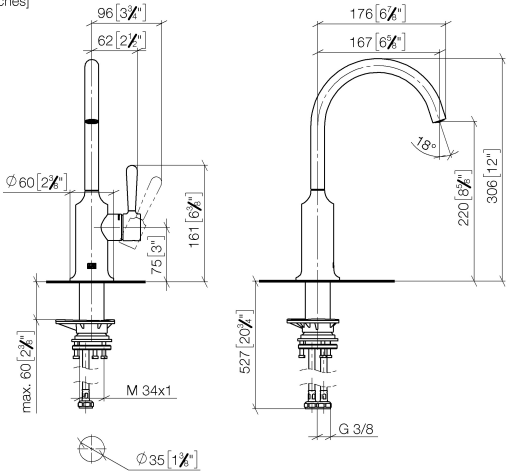
### Recommended miscellaneous

**VAIA Dispenser with rosette -  
Brushed Dark Platinum** 82 434 809-99

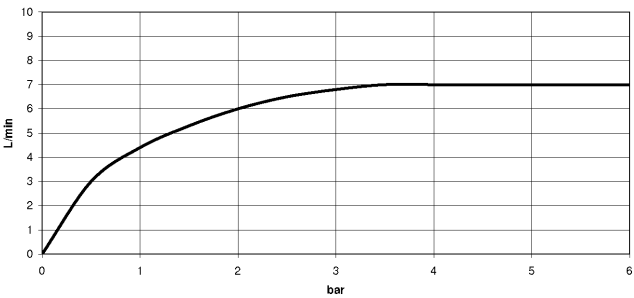


33 805 809

mm [inches]



Flow rate chart



Codes & Standards

DIN 4109

ISO 3822

Scottish Water  
Byelaws

UK Water Supply  
Regulations

Ü-Zeichen



## VAIA BAR TAP Single-lever mixer - Brushed Dark Platinum

---

VAIA

33 805 809

### Certificates

---

LGA\_29

WRAS\_240602

33 805 809

**Product version from 7/1/2023**

Parts for other  
finishes can be found  
here: [Chrome](#)





## VAIA BAR TAP Single-lever mixer - Brushed Dark Platinum

VAIA

33 805 809

### Spare parts list

#### Product version from 7/1/2023

| No. | Item Number        | Name  | Quantity used | Delivery time |
|-----|--------------------|-------|---------------|---------------|
|     | 90 28 22 311 02-99 | spout | 9             | -             |

Spare part can no longer be ordered, please order the replacement item