

META SQUARE BAR TAP Single-lever mixer - Durabronss (23kt Gold)

META SQUARE


33 805 861
Product version from 1/1/2025



- 166mm projection
- pivotable spout 360°
- Optional swivel limiter available with swivel limiter set 12 820 970 90
- air-enriched flow
- max. flow 8 l/min at 3 bar flow pressure
- lead-free
- This product can help a building meet the requirements of Green Building Rating Systems, e.g. LEED®, BREEAM®, DGNB
- WRAS

	Durabronss (23kt Gold)	33 805 861-09
	Chrome	33 805 861-00
	Brushed Platinum	33 805 861-06
	Platinum	33 805 861-08
	Dark Chrome	33 805 861-19
	Brushed Durabronss (23kt Gold)	33 805 861-28
	Matte Black	33 805 861-33
	Brushed Bronze	33 805 861-42
	Brushed Champagne (22kt Gold)	33 805 861-46
	Champagne (22kt Gold)	33 805 861-47
	Brushed Chrome	33 805 861-93
	Brushed Dark Platinum	33 805 861-99

Recommended miscellaneous

	Swivel limitation set -	12 820 970 90
---	-------------------------	---------------

Recommended miscellaneous

	Strainer waste with control handle - Durabronss (23kt Gold)	10 712 970-09
---	---	---------------

Recommended miscellaneous

	Dispenser without rosette - Durabronss (23kt Gold)	82 424 970-09
---	--	---------------

33 805 861 Product version from 1/1/2025



Flow rate chart



Codes & Standards

DIN 4109

ISO 3822

Scottish Water
Byelaws

UK Water Supply
Regulations

Ü-Zeichen



META SQUARE BAR TAP Single-lever mixer - Durabronss (23kt Gold)

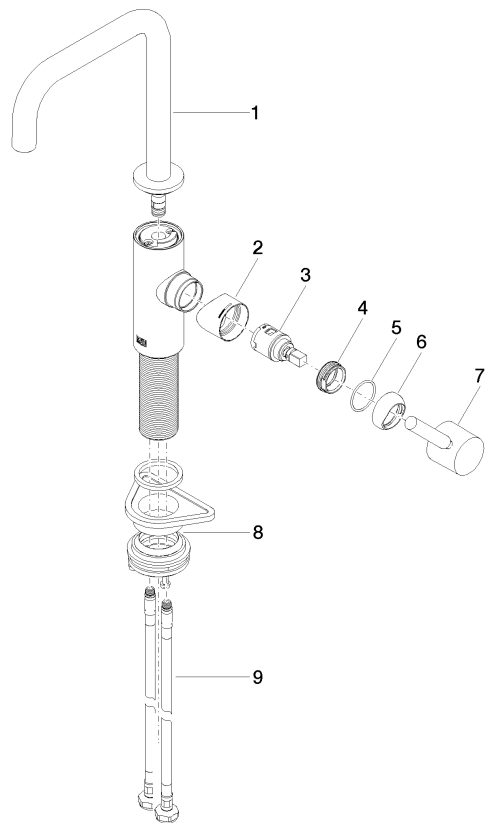
META SQUARE

33 805 861 Product version from 1/1/2025

Certificates and sustainability

LGA_38

WRAS_240102



Spare parts list

No.	Item Number	Name	Quantity used	Delivery time
3	90 15 05 042 00 90	cartridge	1.00	2
9	04 30 04 101 00 90	hose	2.00	2
1	90 28 22 285 00-09	spout	1.00	40
2	09 19 86 012-09	cover	1.00	60
4	09 24 04 266 90	nut	1.00	2
5	09 14 10 091 90	seal	1.00	2
8	04 23 10 044 08 90	fixing set	1.00	2
7	90 20 66 003 00-09	handle	1.00	40
6	90 28 30 052 00-09	cover	1.00	40