

TARA ULTRA BAR TAP Single-lever mixer - Chrome

TARA ULTRA

33 805 875 Product version up to 5/15/2020



- 166mm projection
- gauge mm
- pivotable spout 360°
- laminar flow
- height of mixer 303 mm
- height up to laminar flow regulator 186 mm
- hole diameter 35 mm
- max. flow 8 l/min at 3 bar flow pressure
- lead-free
- This product can help a building meet the requirements of Green Building Rating Systems, e.g. LEED®, BREEAM®, DGNB

	Chrome	33 805 875-00
	Brushed Platinum	33 805 875-06
	Platinum	33 805 875-08
	Durabrass (23kt Gold)	33 805 875-09
	Dark Chrome	33 805 875-19
	Brushed Durabrass (23kt Gold)	33 805 875-28
	Matte Black	33 805 875-33
	Brushed Bronze	33 805 875-42
	Brushed Champagne (22kt Gold)	33 805 875-46
	Champagne (22kt Gold)	33 805 875-47
	Brushed Chrome	33 805 875-93
	Brushed Dark Platinum	33 805 875-99

Recommended miscellaneous

Dispenser without rosette - Chrome

82 424 970-00



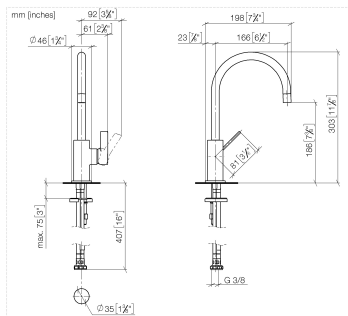
Recommended miscellaneous

Strainer waste with control handle - Chrome

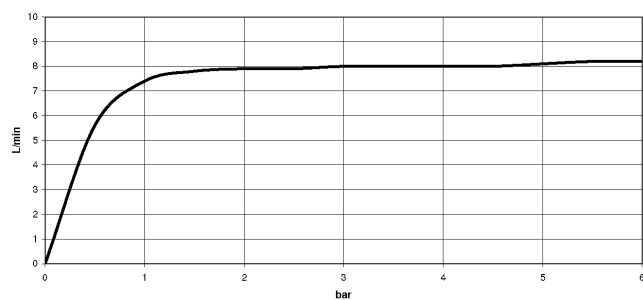
10 712 970-00



33 805 875 Product version up to 5/15/2020



Flow rate chart



Codes & Standards

DIN 4109

ISO 3822

Ü-Zeichen



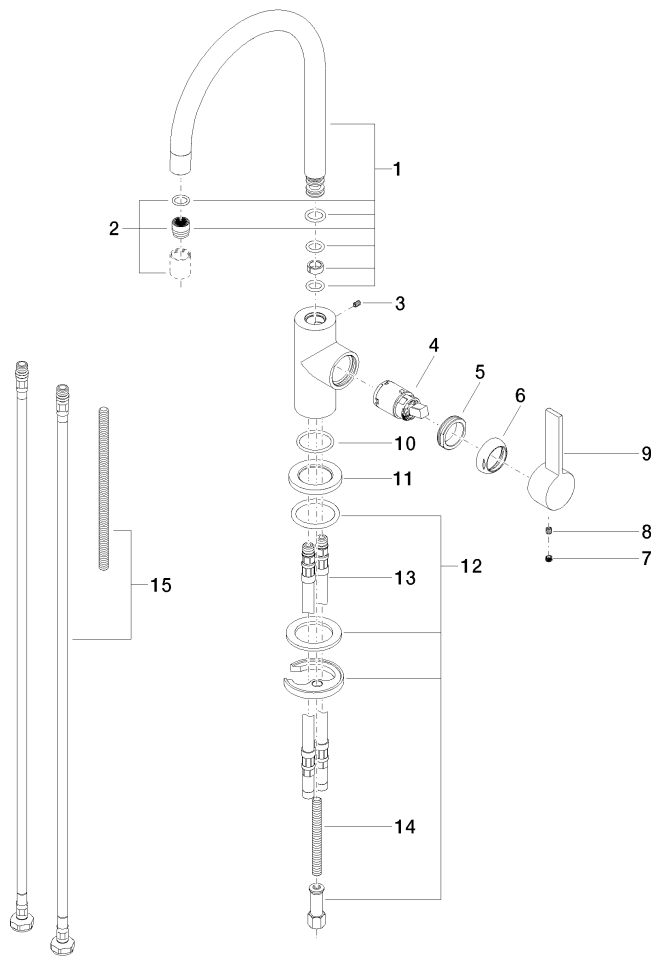
TARA ULTRA BAR TAP Single-lever mixer - Chrome

TARA ULTRA

33 805 875 Product version up to 5/15/2020

Certificates and sustainability

LGA_18



Spare parts list

No.	Item Number	Name	Quantity used	Delivery time
3	09 31 11 008 90	pin	1.00	2
12	04 30 11 038 64 90	fixing set	1.00	2
14	09 31 11 011 90	pin	1.00	2
10	09 14 10 118 90	seal	1.00	2
5	09 24 04 130-07	nut	1.00	30
13	04 30 04 016 00 90	hose	2.00	60
1	90 28 22 206 00-00	spout	1.00	10
6	09 24 04 204-00	cover	1.00	10
15	12 803 970 90	extension	1.00	60
9	09 20 88 051-00	handle	1.00	10
2	90 23 01 067 00-00	aerator	1.00	10
11	09 27 85 001-00	rosette	1.00	10
4	90 15 05 041 00 90	cartridge	1.00	2
8	90 31 11 030 00 90	pin	1.00	2
7	90 31 20 109 00 90	plug	1.00	2