

ELIO Single-lever mixer Pull-out - Champagne (22kt Gold)






ELIO

33 840 790



- 235mm projection
- pivotable spout 360°
- air-enriched flow
- height of mixer 337 mm
- height up to aerator 300 mm
- hole diameter 35 mm
- fabric braided hose 1500 mm
- max. flow 8.8 l/min at 3 bar flow pressure
- lead-free
- This product can help a building meet the requirements of Green Building Rating Systems, e.g. LEED®, BREEAM®, DGNB

Intrinsic protection against back flow.

	Champagne (22kt Gold)	33 840 790-47
	Chrome	33 840 790-00
	Brushed Platinum	33 840 790-06
	Platinum	33 840 790-08
	Dark Chrome	33 840 790-19
	Brushed Durabronze (23kt Gold)	33 840 790-28
	Brushed Champagne (22kt Gold)	33 840 790-46
	Brushed Chrome	33 840 790-93
	Brushed Dark Platinum	33 840 790-99

Recommended miscellaneous



Dispenser without rosette - Champagne (22kt Gold) 82 424 970-47

Recommended miscellaneous

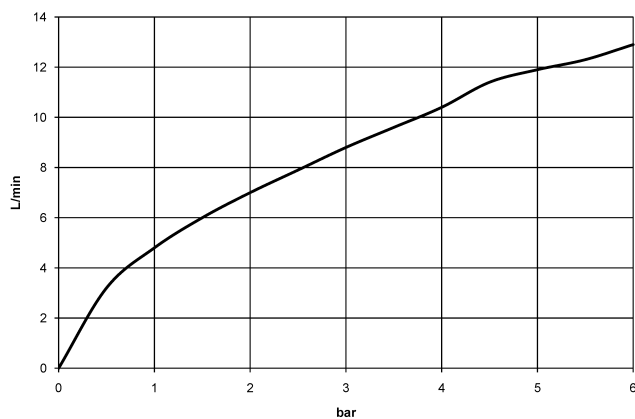


Strainer waste with control handle - Champagne (22kt Gold) 10 712 970-47

33 840 790



Flow rate chart



Codes & Standards

DIN 4109

EN 1717

Executive Order
no. 1007

ISO 3822

Ü-Zeichen



ELIO Single-lever mixer Pull-out - Champagne (22kt Gold)

ELIO

33 840 790

Certificates

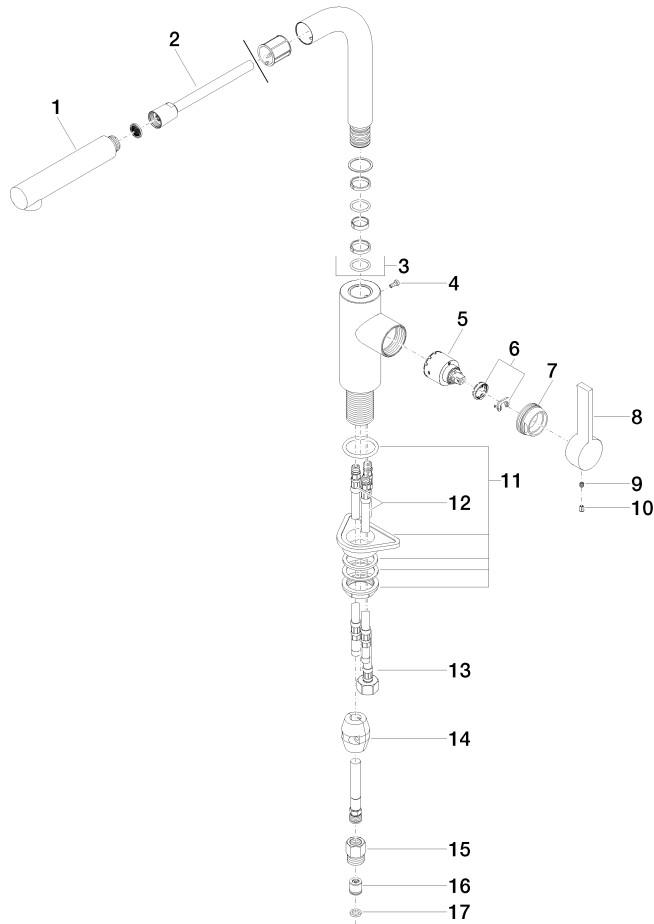
Belgaqua_22_277_2 LGA_19

GDV_0400

33 840 790

Product version from 6/1/2022

Parts for other finishes can be found here: [Chrome](#)





ELIO Single-lever mixer Pull-out - Champagne (22kt Gold)

ELIO

33 840 790

Spare parts list

Product version from 6/1/2022