

## VAIA Single-lever mixer Pull-down with spray function - Brushed Dark Platinum

VAIA

33 870 809 Product version from 7/1/2023



- 240mm projection
- pivotable spout 360°
- Optional swivel limiter available with swivel limiter set 12 823 970 90
- air-enriched flow and spray flow
- 1800 mm metal shower hose
- sprayface with anti-scaling system
- max. flow 8 l/min at 3 bar flow pressure
- lead-free
- Flow modes can be changed while the water is running
- This product can help a building meet the requirements of Green Building Rating Systems, e.g. LEED®, BREEAM®, DGNB

Intrinsic protection against back flow.

|   |                               |               |
|---|-------------------------------|---------------|
|    | Brushed Dark Platinum         | 33 870 809-99 |
|    | Chrome                        | 33 870 809-00 |
|    | Brushed Platinum              | 33 870 809-06 |
|    | Platinum                      | 33 870 809-08 |
|    | Durabrass (23kt Gold)         | 33 870 809-09 |
|    | Dark Chrome                   | 33 870 809-19 |
|    | Brushed Durabrass (23kt Gold) | 33 870 809-28 |
|    | Matte Black                   | 33 870 809-33 |
|    | Brushed Bronze                | 33 870 809-42 |
|   | Brushed Champagne (22kt Gold) | 33 870 809-46 |
|  | Champagne (22kt Gold)         | 33 870 809-47 |
|  | Brushed Chrome                | 33 870 809-93 |

### Recommended miscellaneous

Swivel limitation set -

12 823 970 90



### Recommended miscellaneous

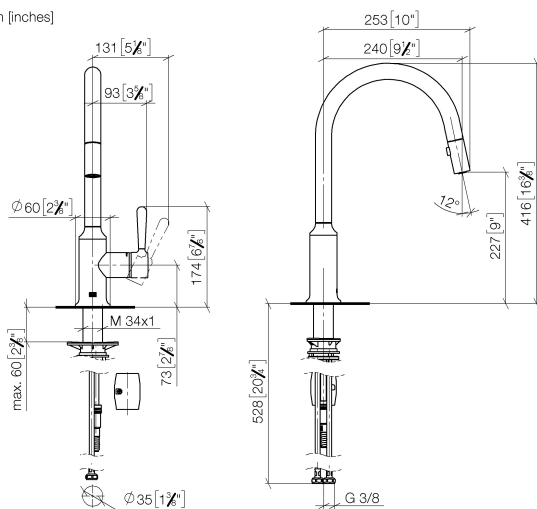
VAIA Dispenser with rosette -  
Brushed Dark Platinum

82 434 809-99



33 870 809 Product version from 7/1/2023

mm [inches]  
1:5



Flow rate chart



## Codes & Standards

DIN 4109

EN 1717

ISO 3822

Ü-Zeichen



## VAIA Single-lever mixer Pull-down with spray function - Brushed Dark Platinum

---

VAIA

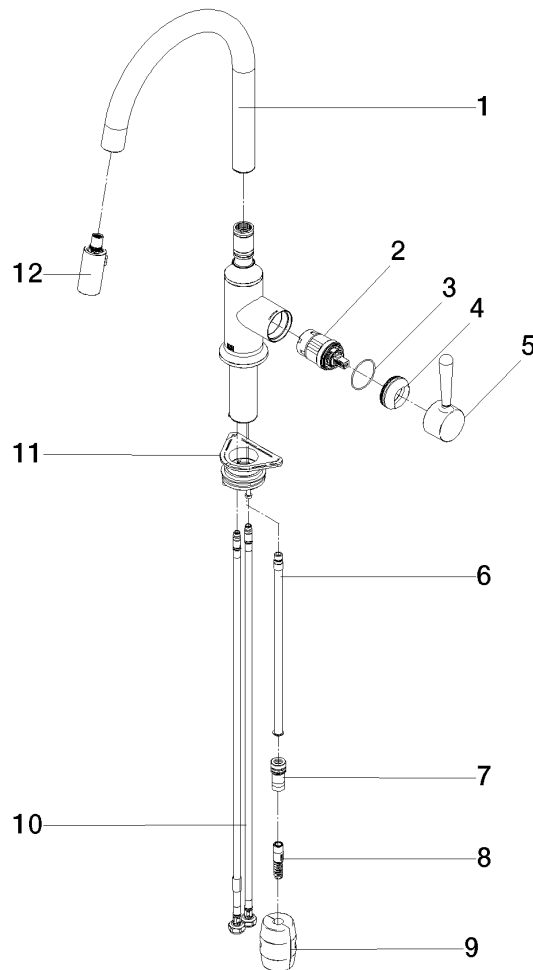
33 870 809 Product version from 7/1/2023

### Certificates and sustainability

---

LGA\_28

Belgaqua\_24-005-2



## Spare parts list

| No. | Item Number        | Name        | Quantity used | Delivery time |
|-----|--------------------|-------------|---------------|---------------|
| 6   | 04 28 20 067 00 90 | pipe        | 1.00          | 2             |
| 7   | 90 24 03 253 00 90 | adaptor     | 1.00          | 2             |
| 4   | 09 28 30 030-99    | cover       | 1.00          | 20            |
| 1   | 90 28 22 397 00-99 | spout       | 1.00          | 20            |
| 2   | 90 15 05 064 05 90 | cartridge   | 1.00          | 2             |
| 3   | 09 14 10 190 90    | seal        | 1.00          | 2             |
| 5   | 90 20 80 052 00-99 | handle      | 1.00          | 20            |
| 10  | 04 30 04 101 00 90 | hose        | 2.00          | 2             |
| 11  | 04 30 11 040 00 90 | fixing set  | 1.00          | 2             |
| 12  | 90 18 40 317 00-99 | shower      | 1.00          | 20            |
| 8   | 04 30 02 120 00-85 | hose        | 1.00          | 10            |
| 9   | 04 21 50 010 00 90 | accessories | 1.00          | 2             |