

## TARA ULTRA Single-lever mixer Pull-down with spray function - Durabronss (23kt Gold)

TARA ULTRA

33 870 875



- 240mm projection
- pivotable spout 360°
- Optional swivel limiter available with swivel limiter set 12 823 970 90
- laminar and spray flow
- height of mixer 500 mm
- height up to laminar flow regulator 240 mm
- hole diameter 35 mm
- 1800 mm metal shower hose
- sprayface with anti-scaling system
- max. flow 10.4 l/min at 3 bar flow pressure
- lead-free
- This product can help a building meet the requirements of Green Building Rating Systems, e.g. LEED®, BREEAM®, DGNB

Intrinsic protection against back flow.

|  |                                |               |
|--|--------------------------------|---------------|
|  | Durabronss (23kt Gold)         | 33 870 875-09 |
|  | Chrome                         | 33 870 875-00 |
|  | Brushed Platinum               | 33 870 875-06 |
|  | Platinum                       | 33 870 875-08 |
|  | Dark Chrome                    | 33 870 875-19 |
|  | Brushed Durabronss (23kt Gold) | 33 870 875-28 |
|  | Matte Black                    | 33 870 875-33 |
|  | Brushed Champagne (22kt Gold)  | 33 870 875-46 |
|  | Champagne (22kt Gold)          | 33 870 875-47 |
|  | Brushed Chrome                 | 33 870 875-93 |
|  | Brushed Dark Platinum          | 33 870 875-99 |

### Recommended miscellaneous

**Swivel limitation set -**

12 823 970 90



### Recommended miscellaneous

**Dispenser without rosette - Durabronss (23kt Gold)**

82 424 970-09



### Recommended miscellaneous

**Strainer waste with control handle - Durabronss (23kt Gold)**

10 712 970-09



## TARA ULTRA Single-lever mixer Pull-down with spray function - Durabrass (23kt Gold)

TARA ULTRA

33 870 875

mm [inches]



### Flow rate chart

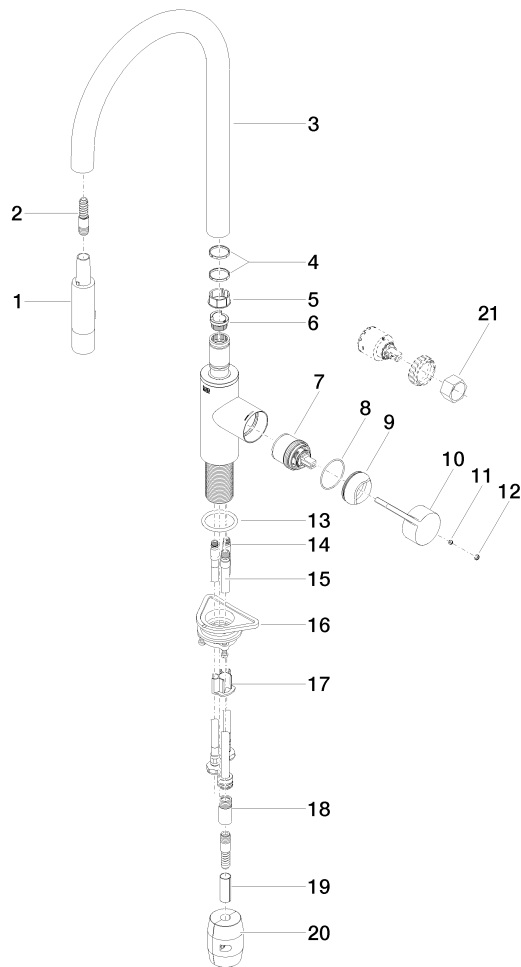


### Certificates

LGA\_28657.

GDV\_0400314.

33 870 875





## TARA ULTRA Single-lever mixer Pull-down with spray function - Durabrass (23kt Gold)

TARA ULTRA

33 870 875

### Spare parts list

| No.  | Item Number        | Name        | Quantity used | Delivery time |
|--|--------------------|-------------|---------------|---------------|
| 1  | 90 12 11 148 00-09 | shower      | 1             | -             |
| Spare part can no longer be ordered, please order the replacement item |                    |             |               |               |
| 2  | 04 30 02 120 00-85 | hose        | 1             | 30            |
| 3  | 90 28 22 304 00-09 | spout       | 1             | 40            |
| 4  | 09 28 10 160 90    | ring        | 2             | 2             |
| 5  | 09 18 40 186 90    | sleeve      | 1             | 2             |
| 6  | 09 30 11 203 90    | ring        | 1             | 2             |
| 7  | 90 15 05 064 05 90 | cartridge   | 1             | 2             |
| 8  | 09 14 10 190 90    | seal        | 1             | 2             |
| 9  | 09 28 30 030-09    | cover       | 1             | 40            |
| 10   | 09 20 87 020-09    | handle      | 1             | 40            |
| 11   | 90 31 11 063 00 90 | pin         | 1             | 2             |
| 12   | 90 31 20 087 00-09 | plug        | 1             | 40            |
| 13   | 09 14 10 036 90    | seal        | 1             | 2             |
| 14   | 04 30 04 101 00 90 | hose        | 2             | 2             |
| 15   | 04 28 20 067 00 90 | pipe        | 1             | 2             |
| 16   | 04 30 11 040 00 90 | fixing set  | 1             | 2             |
| 17   | 09 20 93 056 90    | insert      | 1             | 2             |
| 18   | 90 24 03 253 00 90 | adaptor     | 1             | 2             |
| 19   | 09 30 03 038 90    | hose        | 1             | 2             |
| 20   | 04 21 50 010 00 90 | accessories | 1             | 2             |
| 21   | 90 30 09 031 00 90 | key         | 1             | 2             |