

ENO Single-lever mixer Pull-out with spray function - Chrome

ENO

33 876 760 Product version from 4/1/2024



- 206mm projection
- pivoting spout 130°
- air-enriched flow and spray flow
- height of mixer 253 mm
- height up to aerator 179 mm
- hole diameter 35 mm
- 1600mm metal shower hose
- max. flow 9.6 l/min at 3 bar flow pressure
- lead-free
- This product can help a building meet the requirements of Green Building Rating Systems, e.g. LEED®, BREEAM®, DGNB

Intrinsic protection against back flow.

	Chrome	33 876 760-00
	Brushed Platinum	33 876 760-06
	Platinum	33 876 760-08
	Dark Chrome	33 876 760-19
	Brushed Durabronze (23kt Gold)	33 876 760-28
	Brushed Bronze	33 876 760-42
	Brushed Champagne (22kt Gold)	33 876 760-46
	Champagne (22kt Gold)	33 876 760-47
	Brushed Chrome	33 876 760-93
	Brushed Dark Platinum	33 876 760-99

Recommended miscellaneous

Strainer waste with control handle - Chrome 10 712 970-00



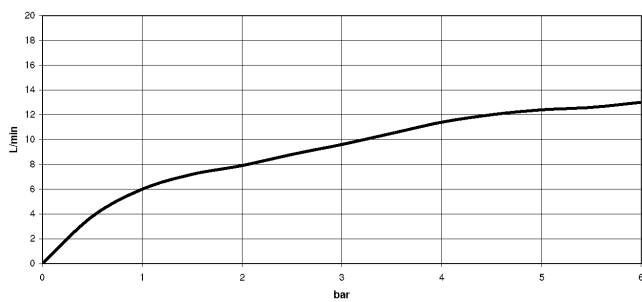
Recommended miscellaneous

Dispenser without rosette - Chrome 82 424 970-00





Flow rate chart



Codes & Standards

DIN 4109

ISO 3822

Ü-Zeichen



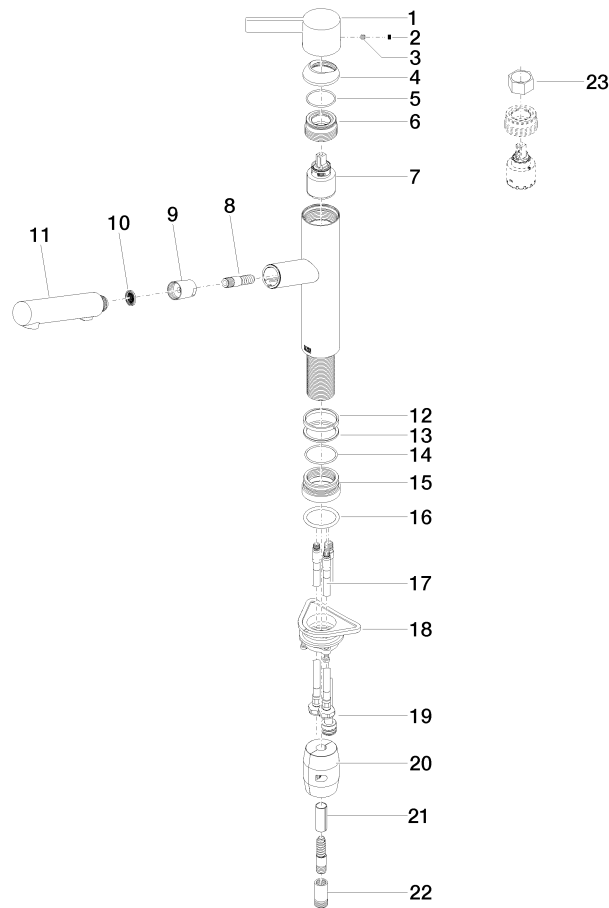
ENO Single-lever mixer Pull-out with spray function - Chrome

ENO

33 876 760 Product version from 4/1/2024

Certificates and sustainability

LGA_38



Spare parts list

No.	Item Number	Name	Quantity used	Delivery time
23	90 30 09 031 00 90	key	1.00	2
22	90 24 03 253 00 90	adaptor	1.00	2
19	04 28 20 067 00 90	pipe	1.00	2
7	90 15 05 064 00 90	cartridge	1.00	2
3	90 31 11 030 00 90	pin	1.00	2
16	09 14 10 036 90	seal	1.00	2
5	09 14 10 102 90	seal	1.00	2
18	04 30 11 040 00 90	fixing set	2.00	2
20	04 21 50 010 00 90	accessories	1.00	2
9	90 24 03 358 00-00	sleeve	1.00	10
15	09 27 76 001-00	rosette	1.00	10
8	04 30 02 121 00-00	hose	1.00	10
2	90 31 20 109 00 90	plug	1.00	2
11	90 12 11 185 00-00	shower	1.00	10
6	09 24 04 270 90	nut	1.00	2
12	09 14 15 029 90	ring	1.00	2
10	09 23 01 039 90	sieve	1.00	2
4	09 28 30 012-00	cover	1.00	10
13	09 28 10 144 90	ring	1.00	2
1	09 20 76 001-00	handle	1.00	10
21	09 30 03 038 90	hose	1.00	2
17	04 30 04 101 00 90	hose	1.00	2
14	09 14 10 034 90	seal	1.00	2