

## TARA Shower pipe with shower thermostat without hand shower FlowReduce 220 mm - Brushed Chrome

TARA

34 458 892



- shower with fixed riser projection 452mm
- Rain shower: PURE RAIN, max. flow rate 7 l/min (at 3 bar)
- Function from: 6 l/min
- rain shower Ø 220 mm
- rain shower with anti-scale system
- rotary diverter with volume control and shut-off function
- slide-on rosettes Ø 70 mm
- height of fittings up to rain shower (bottom edge) 964mm
- height of fittings up to top edge of elbow 1267mm
- gauge 150 mm - 13 mm
- metal shower hose 1750mm with integrated anti-twist protection
- 1/2" connection
- slide bar
- Pipe diameter 23.5 mm
- This product can help a building meet the requirements of Green Building Rating Systems, e.g. LEED®, BREEAM®, DGNB
- WRAS 2204013

This article does not include a hand shower!

Intrinsic protection against back flow.

|  |                                |               |
|--|--------------------------------|---------------|
|    | Brushed Chrome                 | 34 458 892-93 |
|    | Chrome                         | 34 458 892-00 |
|    | Brushed Platinum               | 34 458 892-06 |
|    | Platinum                       | 34 458 892-08 |
|    | Dark Chrome                    | 34 458 892-19 |
|    | Brushed Durabronze (23kt Gold) | 34 458 892-28 |
|    | Matte Black                    | 34 458 892-33 |
|    | Brushed Bronze                 | 34 458 892-42 |
|    | Brushed Champagne (22kt Gold)  | 34 458 892-46 |
|   | Champagne (22kt Gold)          | 34 458 892-47 |
|  | Brushed Dark Platinum          | 34 458 892-99 |

## TARA Shower pipe with shower thermostat without hand shower FlowReduce 220 mm - Brushed Chrome

TARA

34 458 892

Required miscellaneous

**Hand shower - Brushed Chrome** 28 017 979-93



Required miscellaneous

**Hand shower - Brushed Chrome** 28 016 979-93



Required miscellaneous

**Hand shower - Brushed Chrome** 28 012 979-93



Required miscellaneous

**Hand shower FlowReduce -  
Brushed Chrome** 28 016 979-93  
0010



Required miscellaneous

**Hand shower FlowReduce -  
Brushed Chrome** 28 018 979-93  
0010



Required miscellaneous

**SERIES-VARIOUS Hand shower -  
Brushed Chrome** 28 029 979-93



Required miscellaneous

**SERIES-VARIOUS Hand shower -  
Brushed Chrome** 28 029 979-93  
0010



Required miscellaneous

**SERIES-VARIOUS Hand shower -  
Brushed Chrome** 28 027 979-93  
0010



Required miscellaneous

**Hand shower - Brushed Chrome** 28 018 979-93



Required miscellaneous

**Hand shower - Brushed Chrome** 28 016 979-93



Required miscellaneous

**Hand shower FlowReduce -  
Brushed Chrome** 28 012 979-93  
0010



Required miscellaneous

**Hand shower FlowReduce -  
Brushed Chrome** 28 016 979-93  
0010



Required miscellaneous

**SERIES-VARIOUS Hand shower -  
Brushed Chrome** 28 029 979-93



Required miscellaneous

**SERIES-VARIOUS Hand shower -  
Brushed Chrome** 28 029 979-93  
0010



Required miscellaneous

**SERIES-VARIOUS Hand shower -  
Brushed Chrome** 28 025 979-93  
0010

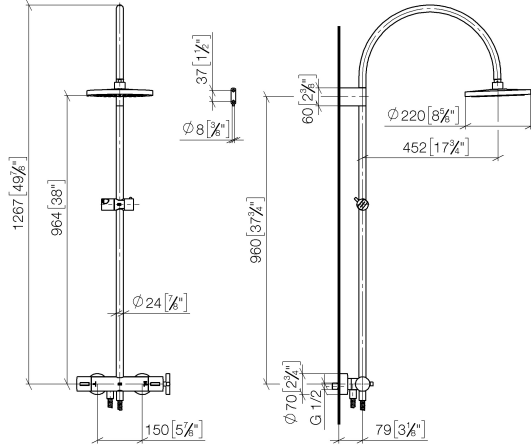


## TARA Shower pipe with shower thermostat without hand shower FlowReduce 220 mm - Brushed Chrome

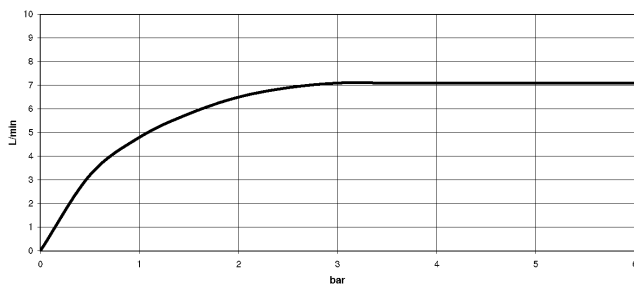
TARA

34 458 892

mm [inches]  
1:10



### Flow rate chart



### Codes & Standards

DIN 4109

EN 1717

ISO 3822

Scottish Water  
Byelaws

UK Water Supply  
Regulations

Ü-Zeichen



TARA Shower pipe with shower thermostat without hand shower FlowReduce  
220 mm - Brushed Chrome

---

TARA

34 458 892

Certificates

---

WRAS\_2204

LGA\_38

Belgaqua\_22\_283\_2

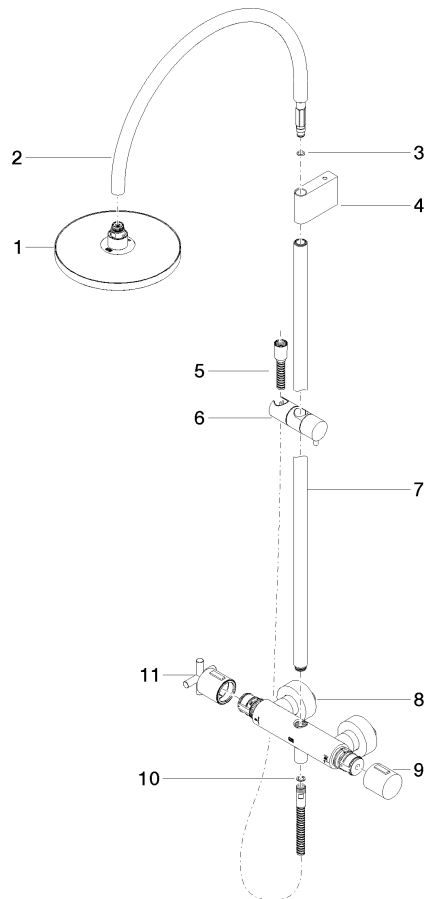
# TARA Shower pipe with shower thermostat without hand shower FlowReduce 220 mm - Brushed Chrome

TARA

34 458 892

**Product version from 5/1/2022**

Parts for other  
finishes can be found  
here: [Chrome](#)





TARA Shower pipe with shower thermostat without hand shower FlowReduce  
220 mm - Brushed Chrome

TARA

34 458 892

**Spare parts list**

**Product version from 5/1/2022**

| No. | Item Number        | Name   | Quantity used | Delivery time |
|-----|--------------------|--------|---------------|---------------|
|     | 90 12 05 092 20-93 | shower | 11            | 20            |