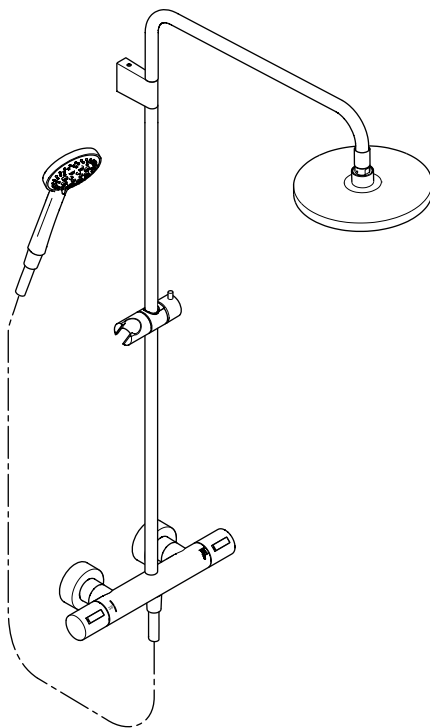
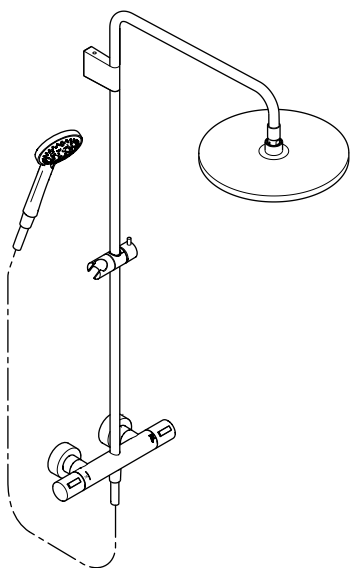


Installation instructions

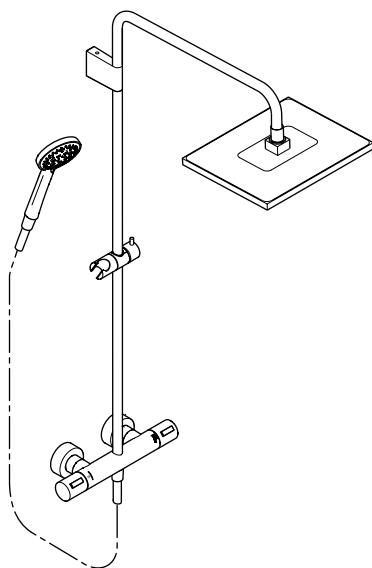
Monteringsanvisning



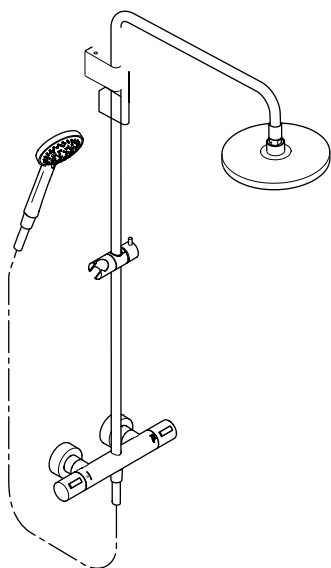
34 468 979-FF 0070 / 34 469 979-FF 0070
34 466 626-FF 0070 / 34 467 626-FF 0070
34 468 980-FF 0070 / 34 469 980-FF 0070
34 466 979-FF 0070 / 34 467 979-FF 0070



34 468 979-FF 0070 / 34 469 979-FF 0070 /
34 466 626-FF 0070 / 34 467 626-FF 0070



34 468 980-FF 0070 / 34 469 980-FF 0070



34 466 979-FF 0070 / 34 467 979-FF 0070



ATTENTION!

This symbol warns of property damages due to non-compliance with the instructions.



NOTICE!

This symbol calls attention to important information.

Please read this manual and follow the instructions.

All manuals and documents belonging to the product have to be passed on to the end user. Otherwise the producer liability may be limited in case of damage.

All work has to be carried out by a competent and qualified plumber according national regulations and regulations of the local water supply companies.

Local accident prevention regulations are to be followed with priority.

Operating conditions and dimensions can be found in the appendix.

For questions or uncertainties regarding installation or operation, please contact the Technical Service of Dornbracht.

You can find relevant contact details on the back of this manual and on the website of Dornbracht: www.dornbracht.com



OBS!

Denna symbol varnar för egendomsskador om anvisningarna inte beaktas.



MEDDELANDE!

Denna symbol gör användaren uppmärksam på viktig information.

Läs igenom bruksanvisningen och beakta anvisningarna.

Se deberán entregar todas las instrucciones y documentos del producto al usuario final. I annat fall kan tillverkarens ansvar vara begränsat om skador skulle uppstå.

Samtliga sanitetsarbeten ska genomföras av en behörig VVS-installatör enl. landsspecifika föreskrifter samt föreskrifterna från lokala vattenförsörjningsbolag.

Lokala arbetsmiljöregler ska alltid iakttas med högsta prioritet.

Driftsförhållanden och måttuppgifter finns i bilagan.

Om du har frågor eller är osäker på hur du ska montera eller använda produkten är du välkommen att kontakta Dornbrachts tekniska service.

Vår kontaktinformation hittar du på baksidan av dessa anvisningar samt på Dornbrachts hemsida: www.dornbracht.com

GB Care and maintenance by the user.
SE Skötsel och service som utförs av användaren.



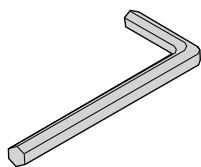
www.dornbracht.com/care

GB Technical information.
SE Teknisk information.

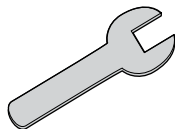
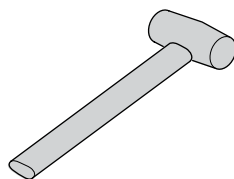
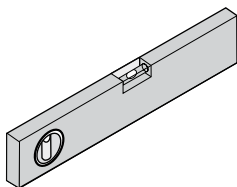


td.dornbracht.com

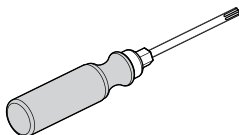
GB Required tools. **SE** Erforderliga verktyg.



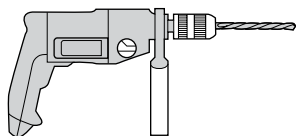
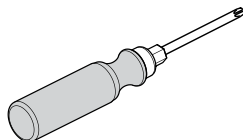
2,5 mm / 3 mm / 14 mm



30 SW



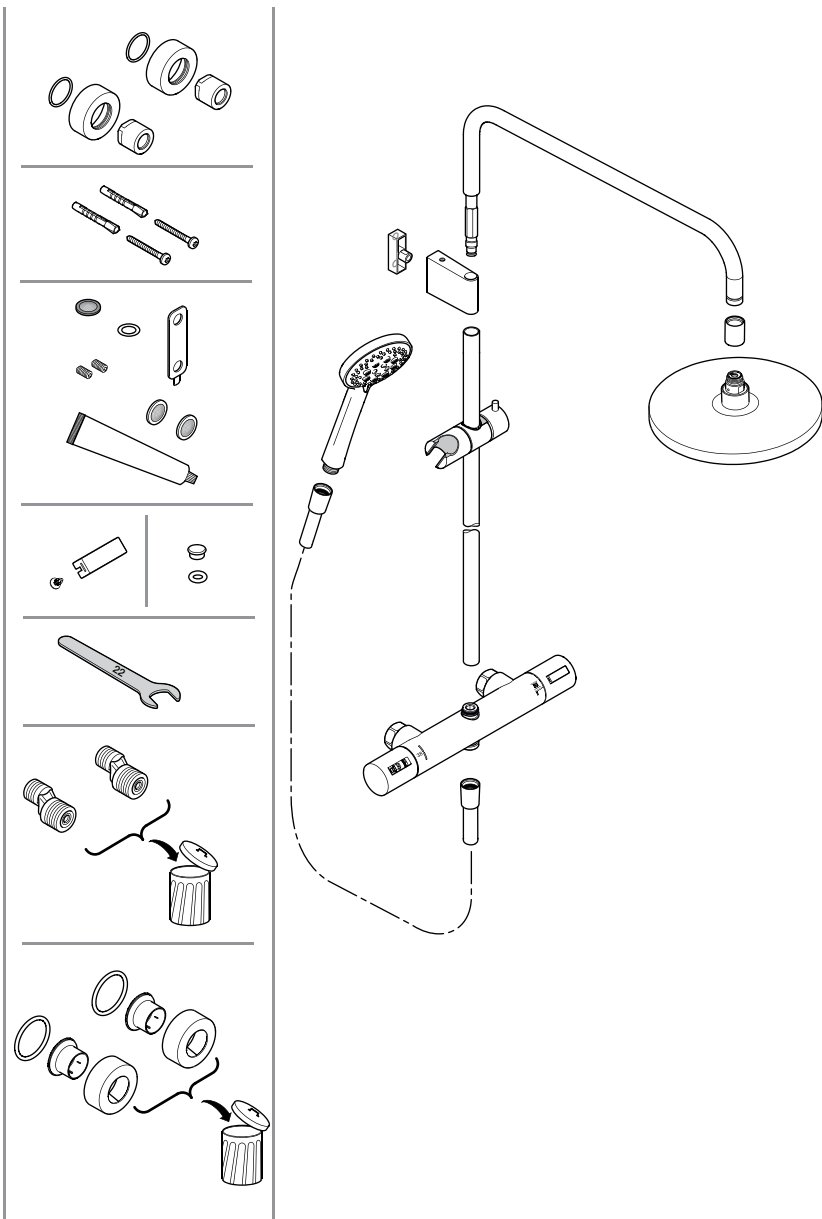
 TX 20



ø 6 mm

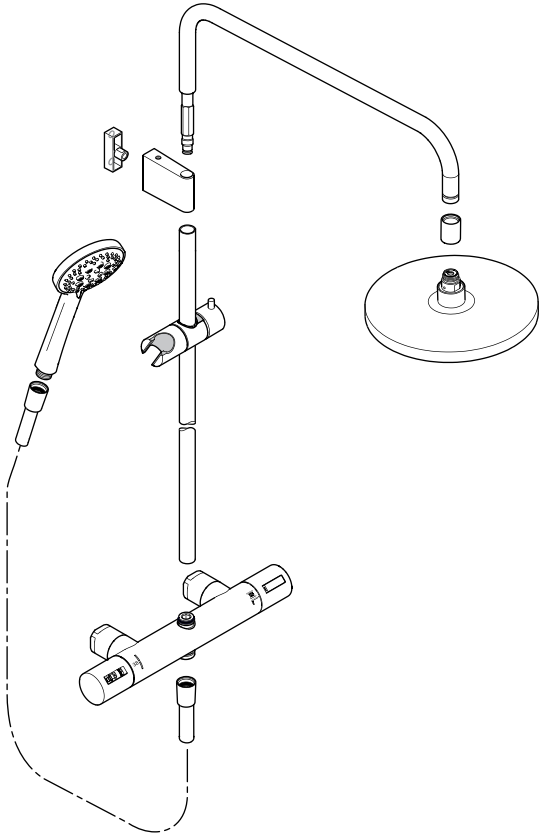
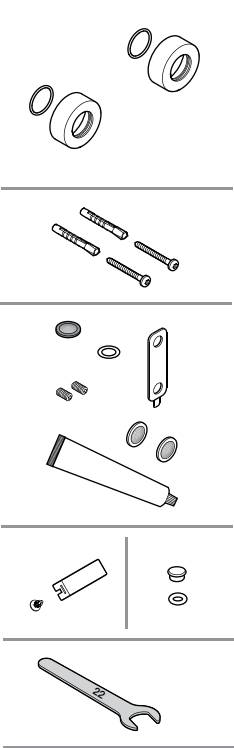
GB Parts supplied. **SE** Leveransomfång.

a 34 468 979-00 0070 / 34 466 626-00 0070 / 34 468 980-00 0070 /
34 466 979-00 0070 / 34 467 979-00 0070

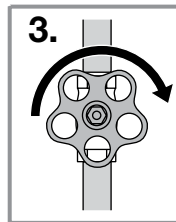
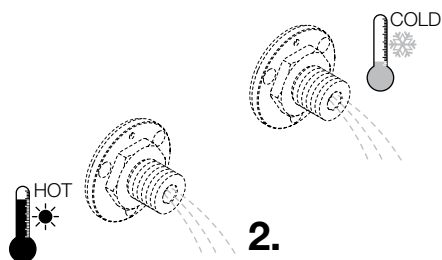
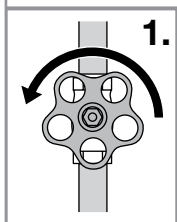


GB Parts supplied. **SE** Leveransomfång.

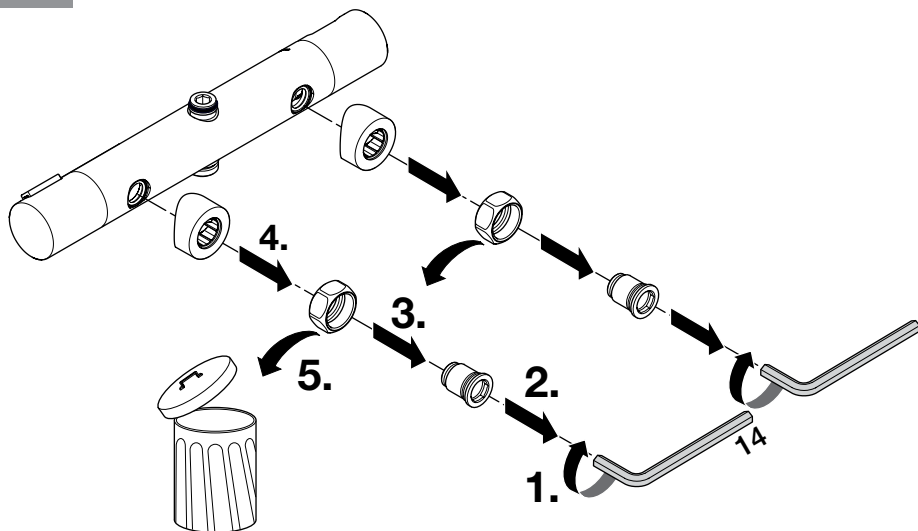
b 34 468 979-FF 0070 / 34 469 979-FF 0070 / 34 466 626-FF 0070 / 34 467 626-FF 0070 /
34 468 980-FF 0070 / 34 469 980-FF 0070 / 34 466 979-FF 0070 / 34 467 979-FF 0070



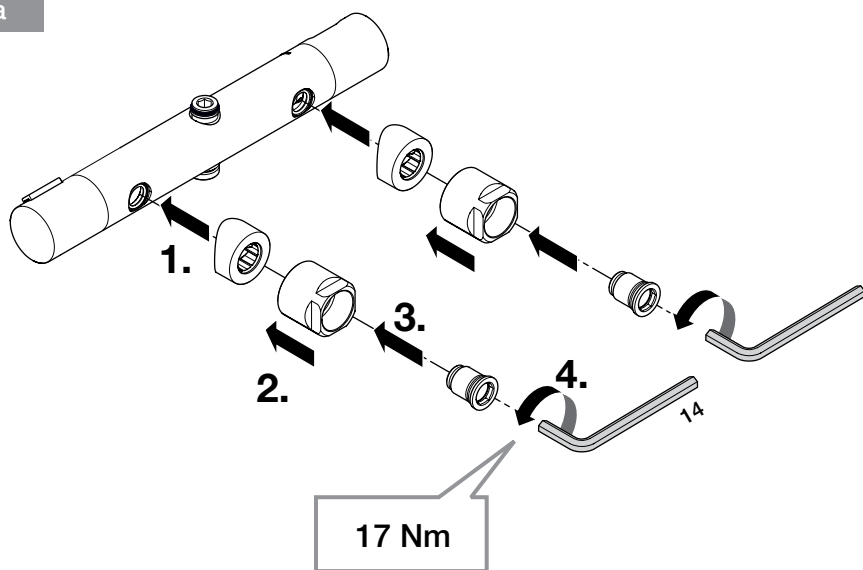
1
ab



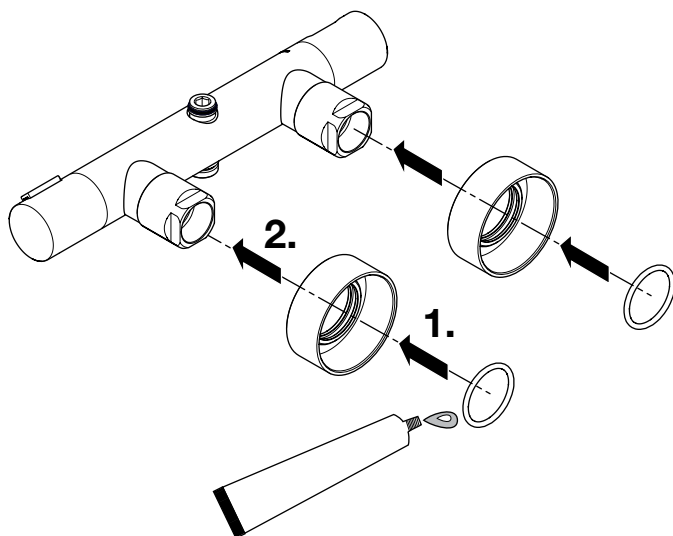
2
a

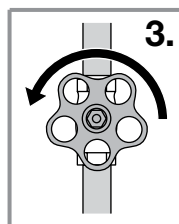
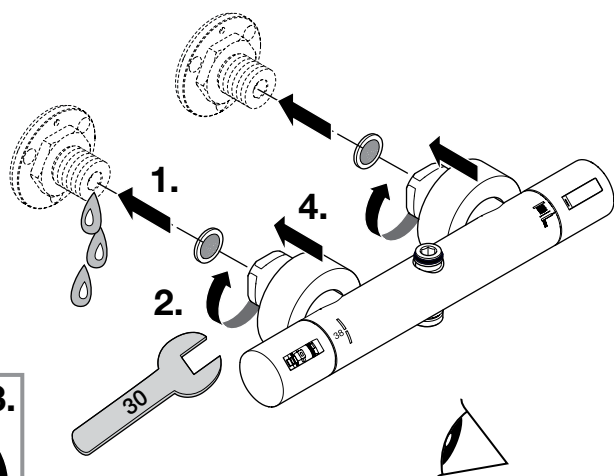


3
a



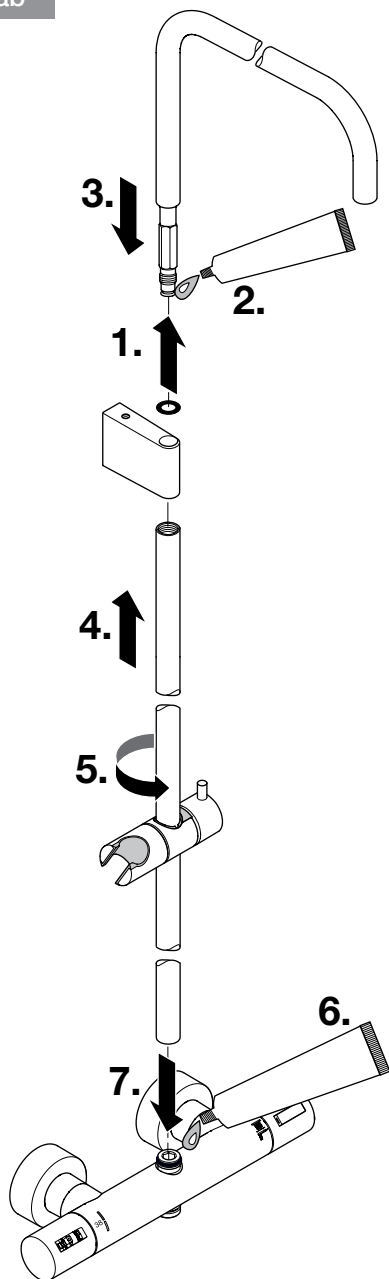
4
ab



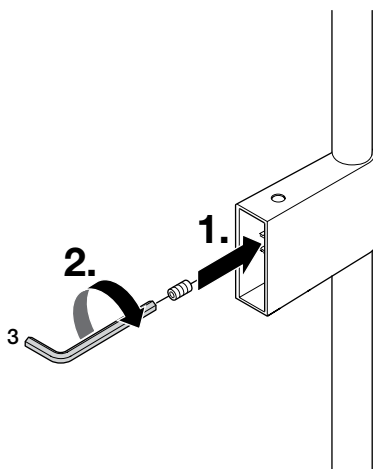


×

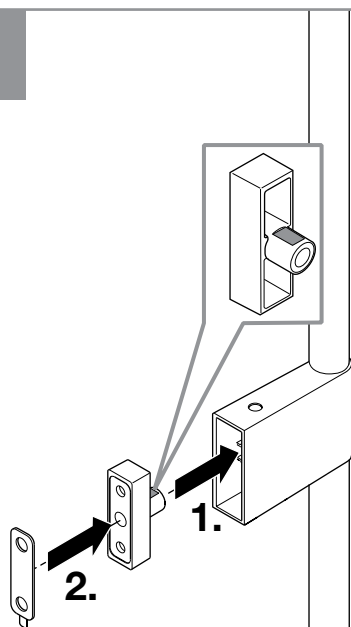
6
ab



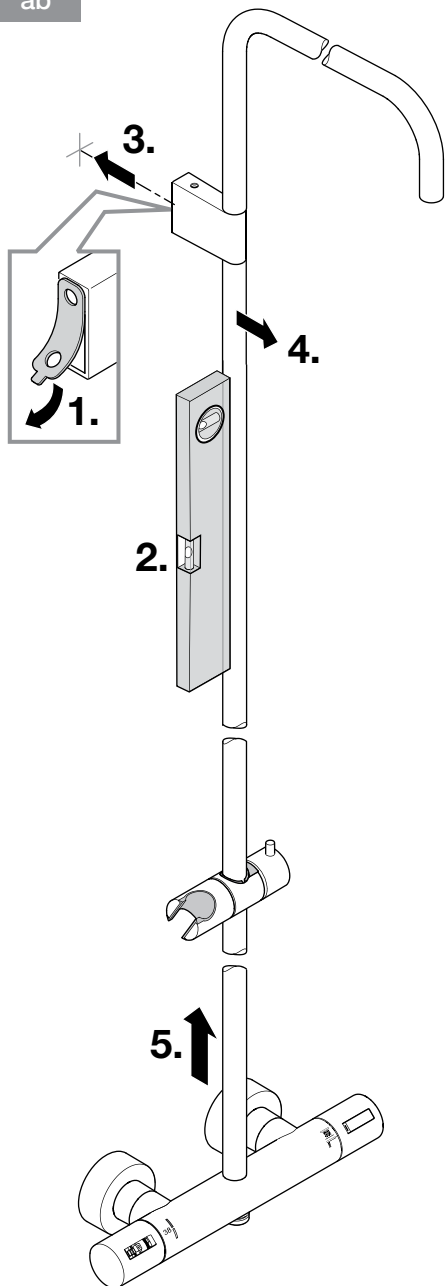
7
ab



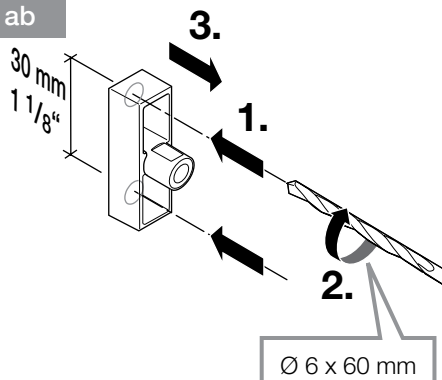
8
ab



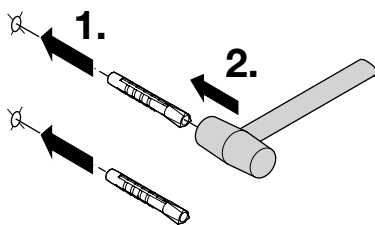
9
ab



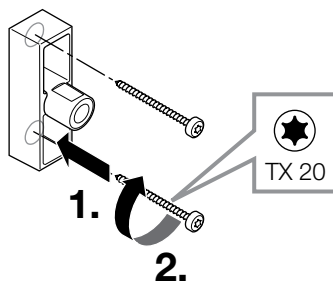
10
ab



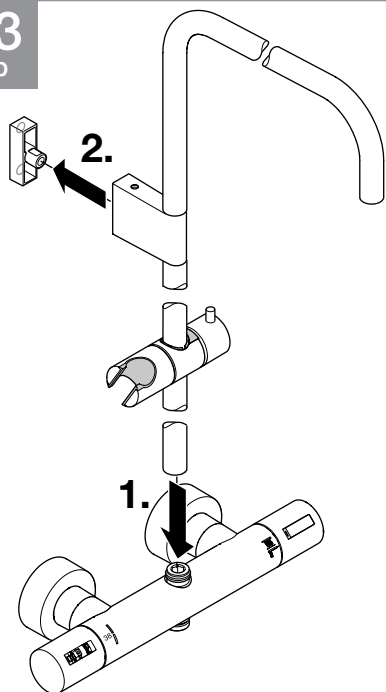
11
ab



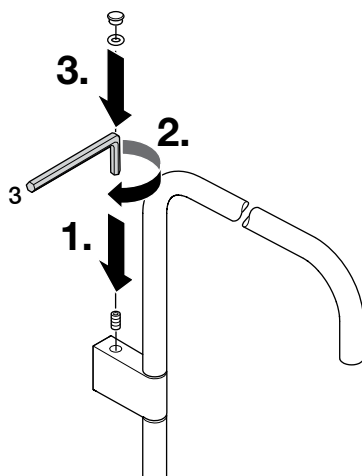
12
ab



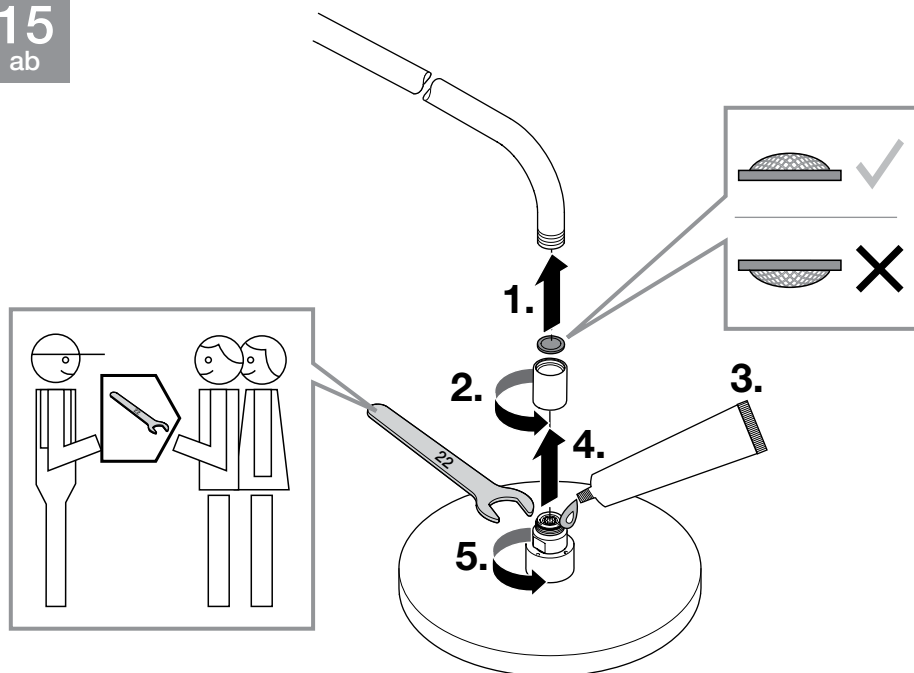
13
ab

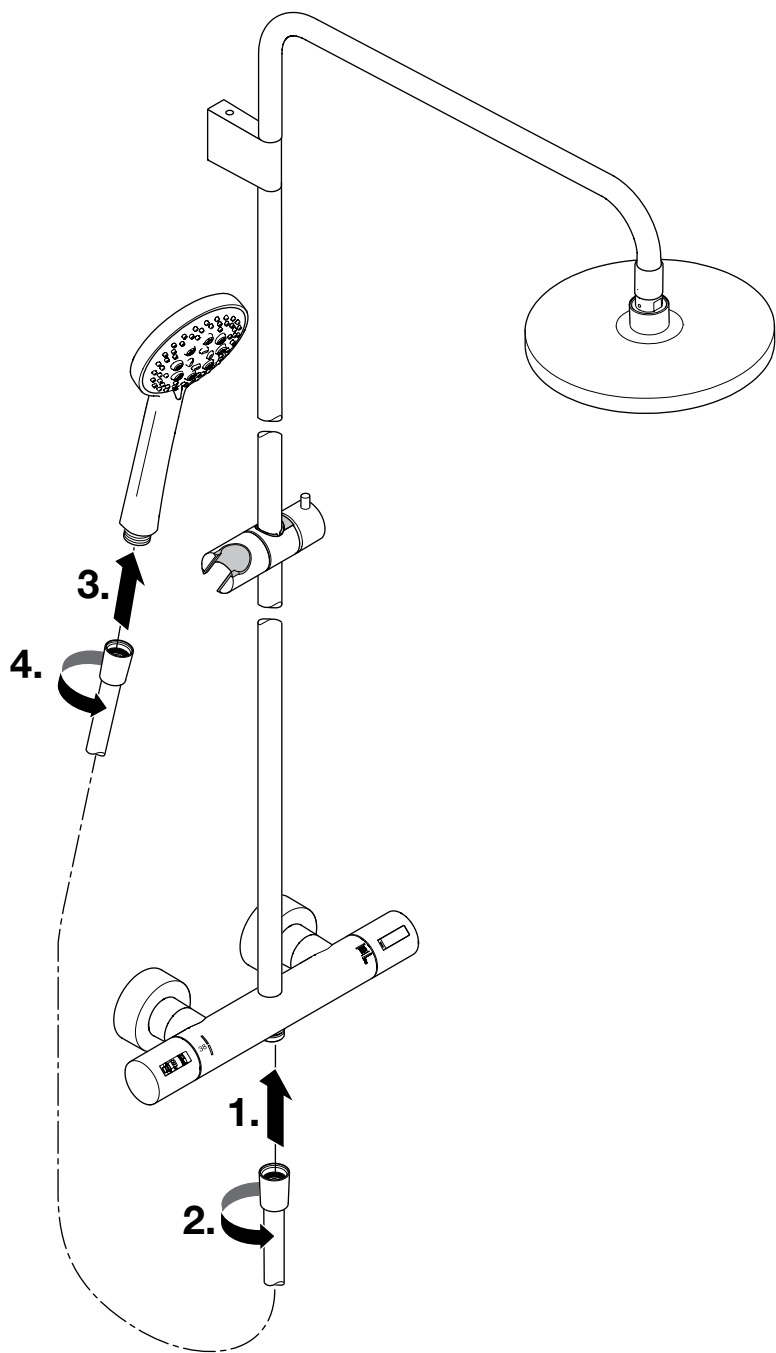


14
ab

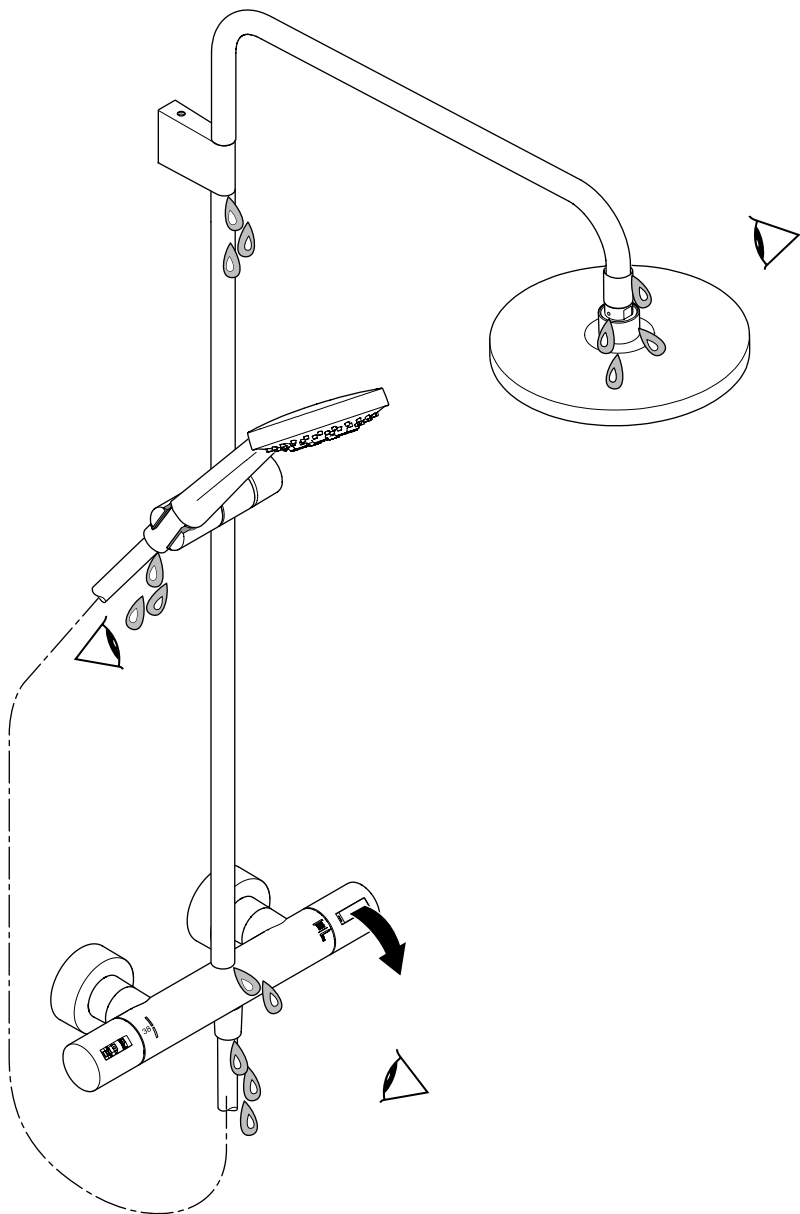


15
ab

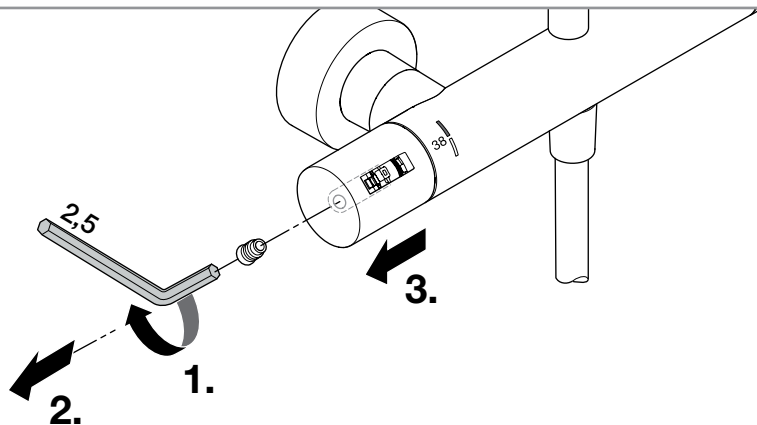




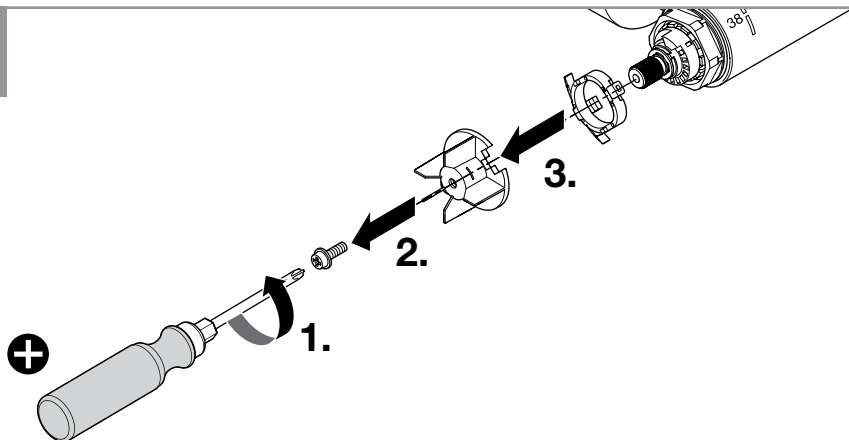
17
ab



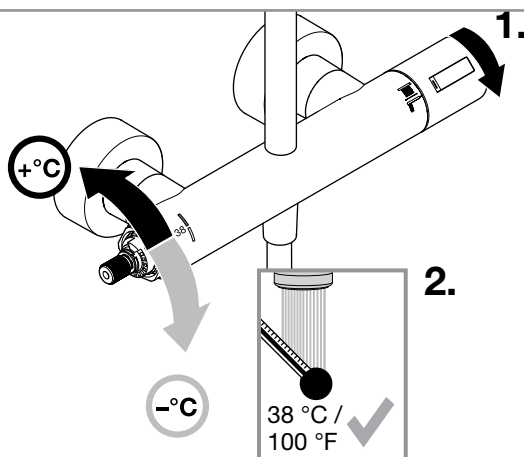
18
ab

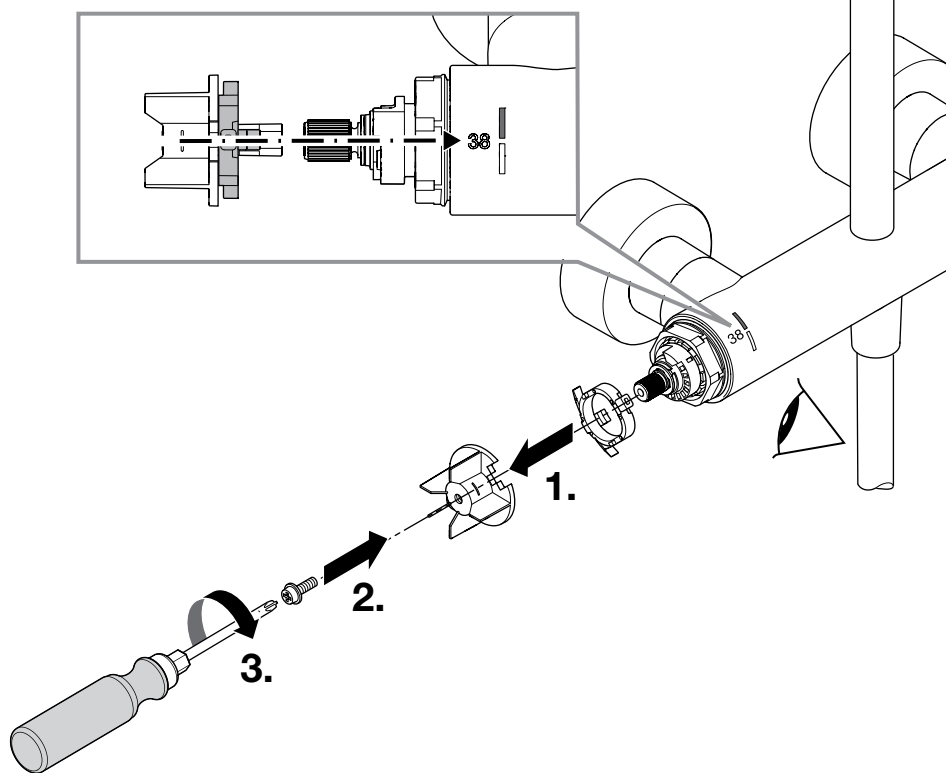


19
ab

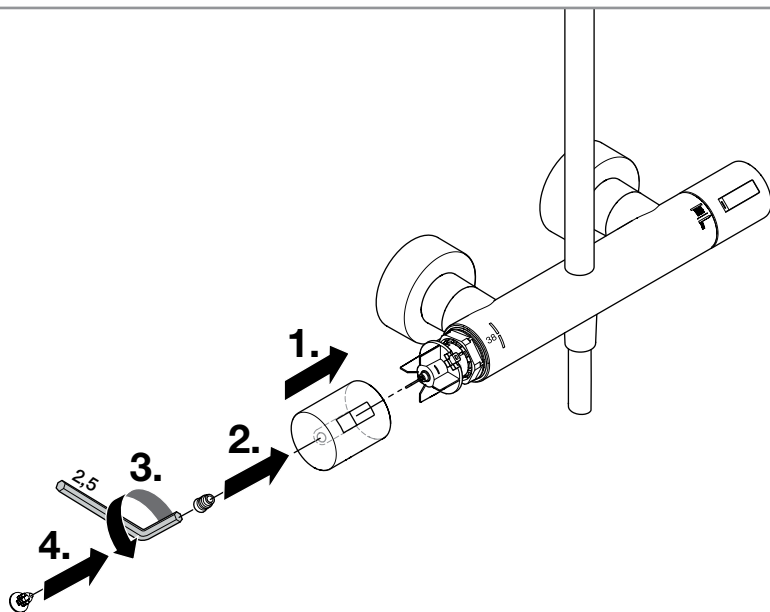


20
ab

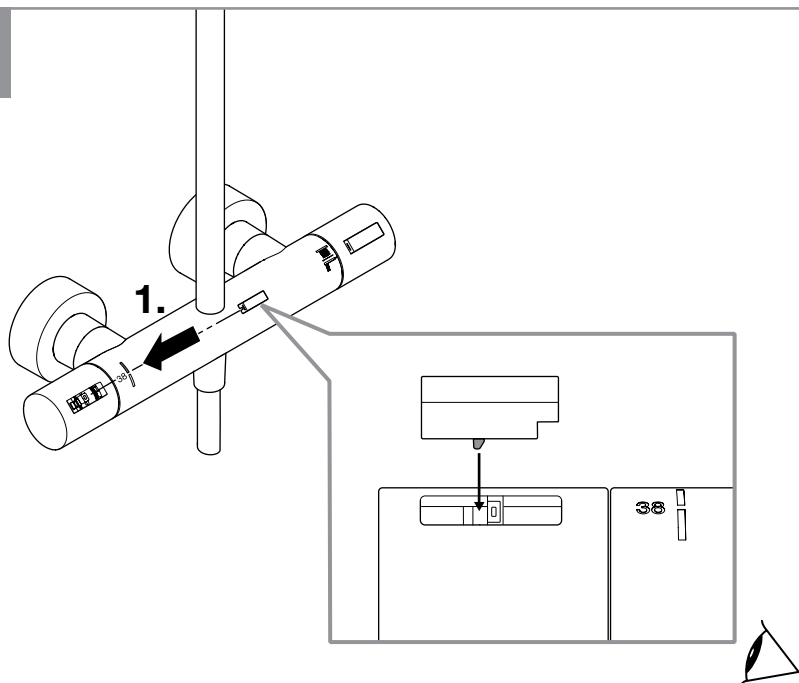




22
ab

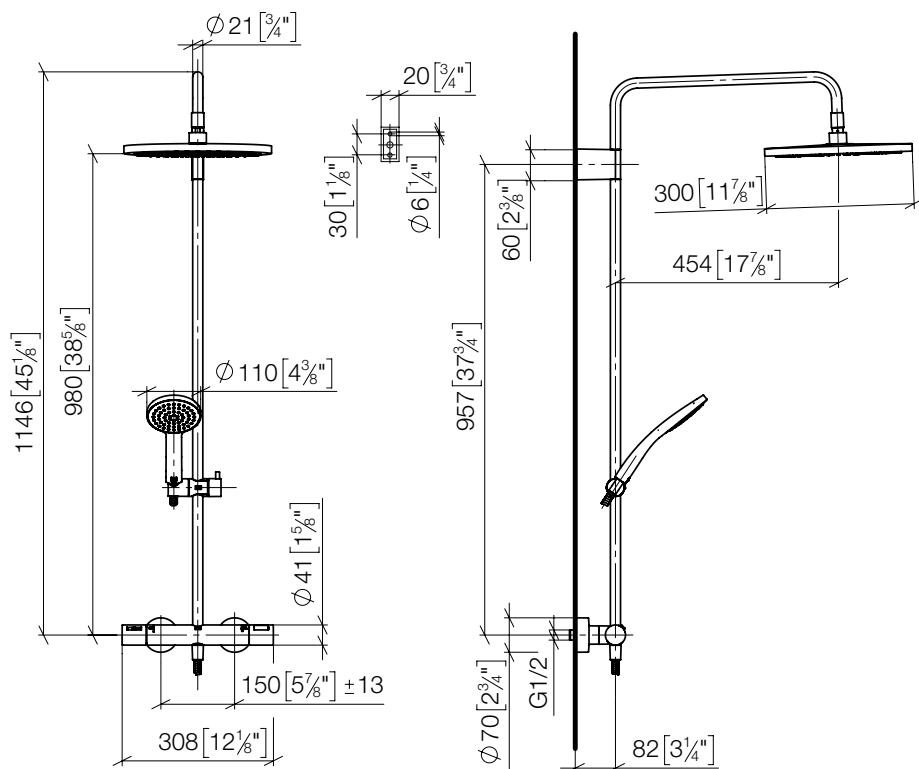


23
ab

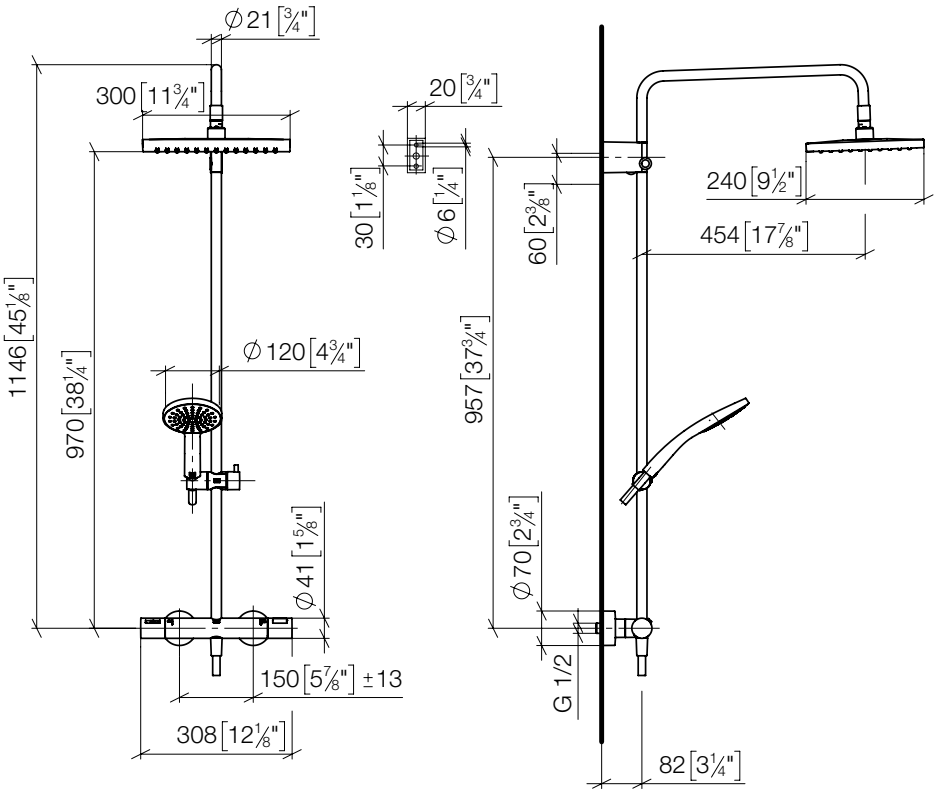


34 468 979-FF 0070 / 34 469 979-FF 0070 /
 34 466 626-FF 0070 / 34 467 626-FF 0070

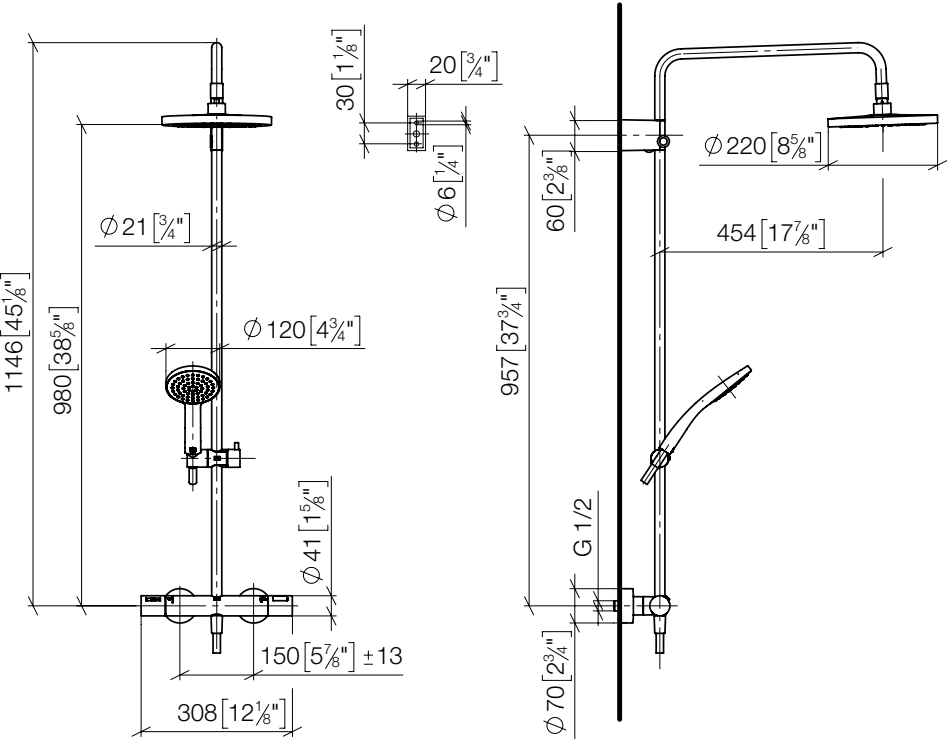
mm [inches]



mm [inches]



mm [inches]



GB Operating conditions

Cold water temperature	5 – 25 °C
Hot water temperature	55 – 65 °C
Recommended hot water temperature	60 °C
Thermal disinfection (5:00 mins.)	≥ 70 °C
Permissible flow pressure	1 – 5 bar
Recommended flow pressure	3 bar

The customer has to provide a pressure reducer in the main line downstream of the water meter to comply with the noise levels according to the noise class at a resting pressure above 500 kPa / 73 psi / 5 bar.

If combined with continuous-flow heaters, the minimum flow volume of the safety shut-off has to be considered.

Observe the manufacturer's instructions for the continuous-flow heater.

SE Driftsförhållanden

Kallvattentemperatur	5 – 25 °C
Varmvattentemperatur	55 – 65 °C
Rekommenderad varmvattentemperatur	60 °C
Termisk desinfektion (5:00 min.)	≥ 70 °C
Tillåtet flödestryck	1 – 5 bar
Rekommenderat flödestryck	3 bar

En trycksänkare ska monterats in i huvudledningen efter vattenmätaren för överensstämmelse med bullervärdena vid ett vilotryck över 500 kPa / 73 psi / 5 bar.

Vid en kombination med genomströmningsberedare ska den minsta flödesmängden för säkerhetsavstängningen beaktas.

Följ anvisningarna från tillverkaren av genomströmningsberedaren.

Dornbracht GmbH & Co. KG
Köbbingser Mühle 6, D-58640 Iserlohn
Tel. +49 2371 8899-900
mail@dornbracht.com
www.dornbracht.com



01 03 08 170 00 / 03.2025