

## Concealed wall mounting -

35 003 970 90    Product version from 10/2/2019



- red brass, lead-free
- 2x female thread 1/2" connections
- dust cover
- anti-water packing
- soundproofing
- WRAS

Can only be combined with exposed trim parts 26  
024 661-FF / 36 013 660-FF / 36 045 660-FF / 36  
013 970-FF / 36 045 970-FF / 36 804 661-FF.

### Recommended miscellaneous



**Extension 25 mm -**                      12 179 970 90  
•Can only be combined with  
exposed trim parts 36 804 661-FF.

### Recommended miscellaneous

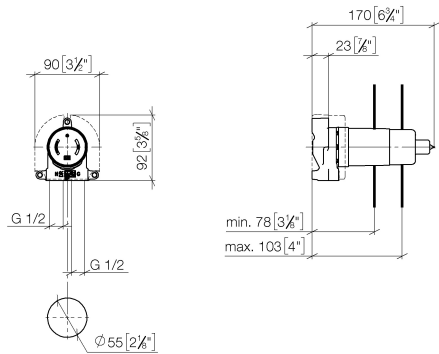


**Leak protection 1/2" -**                      12 010 970 90  
•This article is needed 2x.

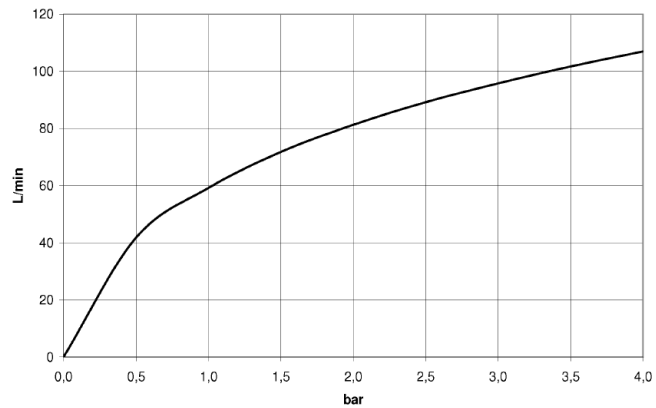
# Concealed wall mounting -

35 003 970 90    Product version from 10/2/2019

mm [inches]



Flow rate chart



## Codes & Standards

DIN 4109	EN 817	ISO 3822	Scottish Water Byelaws
UK Water Supply Regulations	Ü-Zeichen		



Concealed wall mounting -

---

35 003 970 90    Product version from 10/2/2019

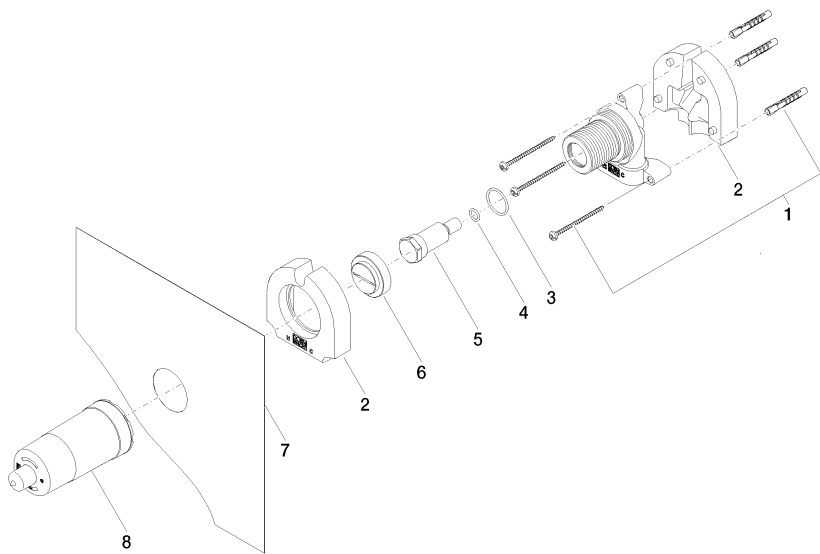
Certificates

---

DVGW_DW- 6512DN0	LGA_18	WRAS_2003	WRAS_2101
---------------------	--------	-----------	-----------

# Concealed wall mounting -

35 003 970 90    Product version from 10/2/2019



## Spare parts list

No.	Item Number	Name	Quantity used	Delivery time
1	05 30 31 029 00 90	fixing set	1	2
2	09 11 11 019 90	accessories	2	2
3	09 14 10 112 90	seal	1	2
4	09 14 10 139 90	seal	1	2
5	09 31 20 038 90	plug	1	2
6	09 20 97 010 90	cap	1	2
7	04 14 03 079 00 90	gasket kit	1	2
8	09 21 02 178 90	cap	1	2